



---

---

---

---

---

---

---

---



---

---

---

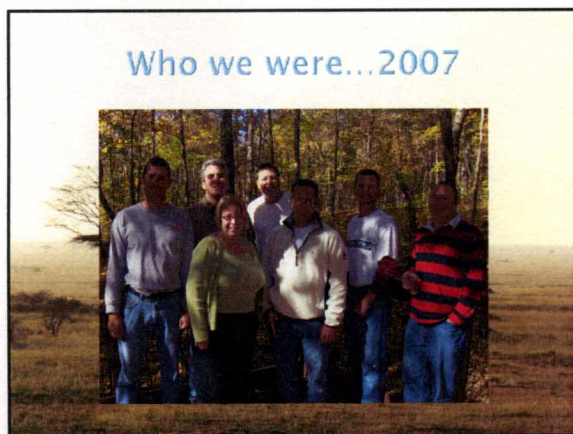
---

---

---

---

---



---

---

---

---

---

---

---

---

### Who we are...2009




---

---

---

---

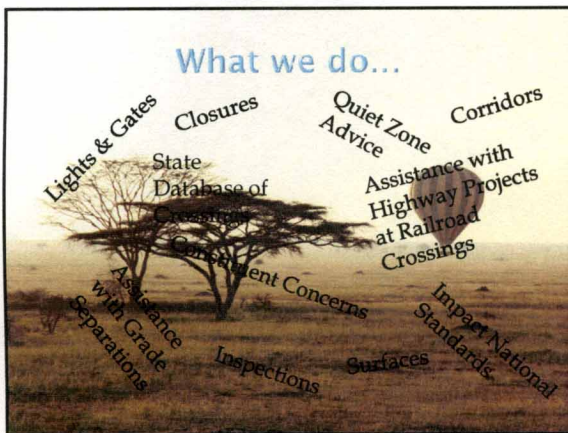
---

---

---

---

### What we do...




---

---

---

---

---

---

---

---

### Overview

Yr	Warning Devices	Closures	Surface Reconstructions	Amount
1999	178	24	30	\$16,389,854
2000	64	5	8	\$9,565,915
2001	143	22	34	\$25,042,390
2002	106	5	39	\$18,990,211
2003	40	6	23	\$15,091,280
2004	83	6	27	\$13,862,002
2005	83	3	23	\$11,580,824
2006	68	9	37	\$14,357,867
2007	71	20	77	\$16,840,143
2008	53	4	8	\$10,932,249
2009	63	11	2	\$18,927,124
<b>TOTAL</b>	<b>952</b>	<b>115</b>	<b>308</b>	<b>\$172,579,879</b>

---

---

---

---

---

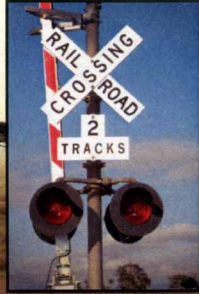
---

---

---

## Grade Crossing Improvement Programs

- ▣ Priority Warning Device Improvements (Original 23 USC 130 Program)
- ▣ Rail Corridor Program
- ▣ Fatal Crash Upgrade
- ▣ Grade Crossing Construction
- ▣ Local Initiatives "Grassroots"
- ▣ State Route Improvements
- ▣ Signal Circuitry Upgrades



---

---

---

---

---

---

---

---

## Broad Opportunities



---

---

---

---

---

---

---

---

## Database

- ▣ Publicly accessible at <http://www.ohiorail.ohio.gov/>
- ▣ Core of ALL project identification
- ▣ We NEED your help!
  - Check for errors in the planning process and project progression
- ▣ Help us:
  - Ensure database is correct
  - Review list of 0 train counts
  - Ask for specific data sorts to check

---

---

---

---

---

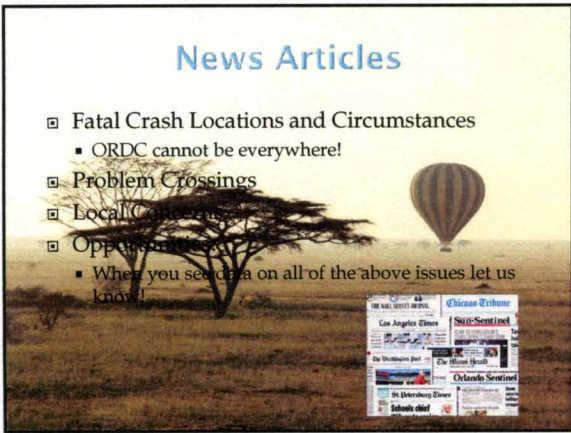
---

---

---

## News Articles

- ❑ Fatal Crash Locations and Circumstances
  - ORDC cannot be everywhere!
- ❑ Problem Crossings
- ❑ Local Coverage
- ❑ Opportunities
  - When you see data on all of the above issues let us know!



---

---

---

---

---

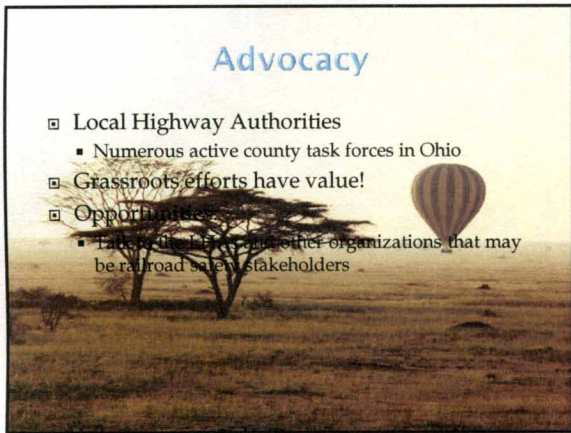
---

---

---

## Advocacy

- ❑ Local Highway Authorities
  - Numerous active county task forces in Ohio
- ❑ Grassroots efforts have value!
- ❑ Opportunities
  - Find out if there are other organizations that may be railroad safety stakeholders



---

---

---

---

---

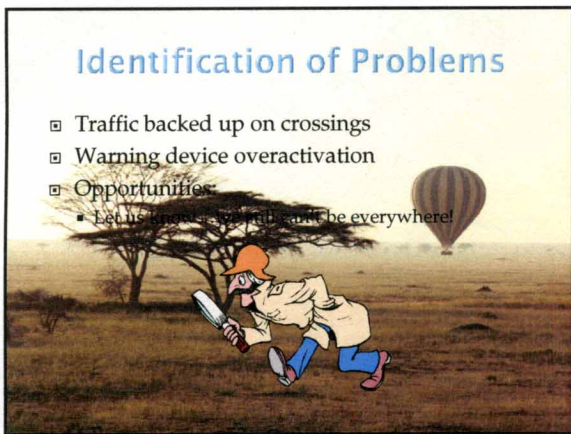
---

---

---

## Identification of Problems

- ❑ Traffic backed up on crossings
- ❑ Warning device overactivation
- ❑ Opportunities
  - Let us know if you can't be everywhere!



---

---

---

---

---

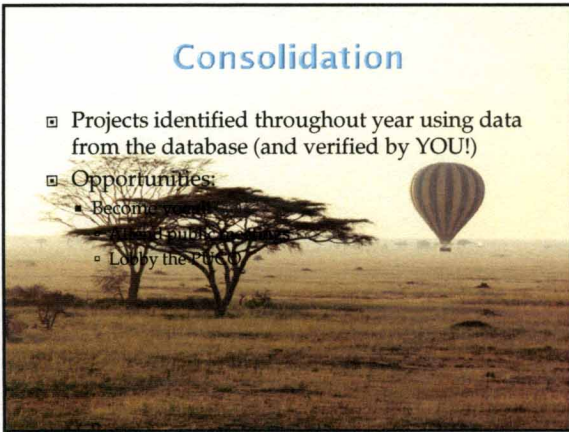
---

---

---

### Consolidation

- ▣ Projects identified throughout year using data from the database (and verified by YOU!)
- ▣ Opportunities:
  - Become a...
  - Lobby the...



---

---

---

---

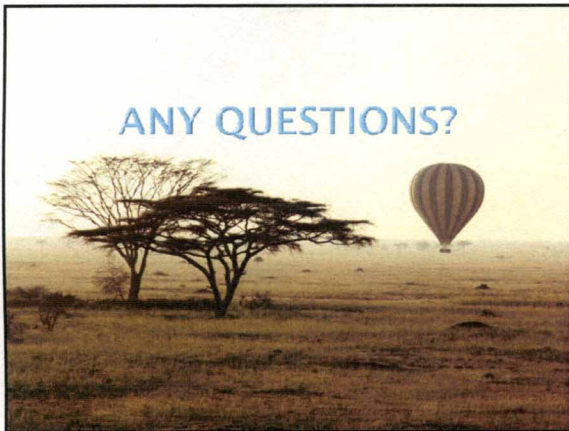
---

---

---

---

### ANY QUESTIONS?



---

---

---

---

---

---

---

---