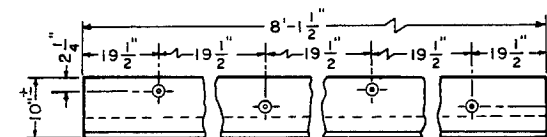


Tie Spacing $19\frac{1}{2}$ " C.to C.

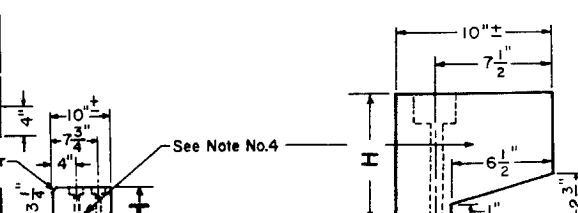
PLANKING ASSEMBLY



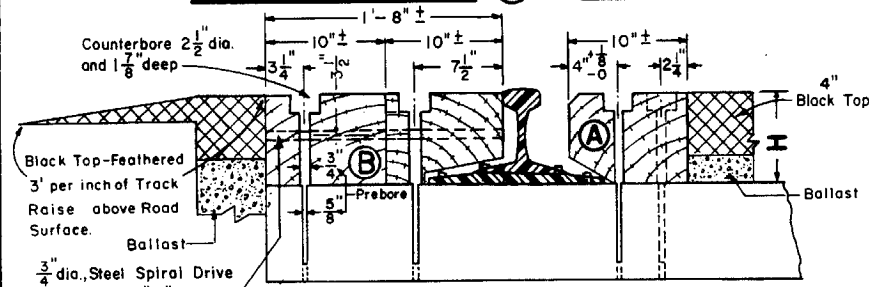
TOP VIEW



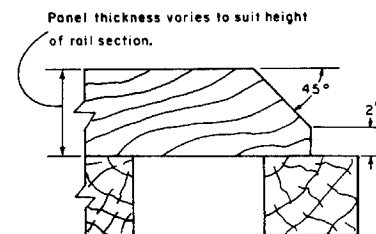
**ELEVATION VIEW
FLANGWAY TIMBER - (A)**



**END VIEW
OUTSIDE TIMBER - (B)**



SECTION X - X



SECTION A - A

RAIL SECTION	MARK A or B	H
155 P.S.	1	8 ⁵ / ₈ "
152 P.S.	1	8 ⁵ / ₈ "
140 R.E.	2	7 ⁷ / ₈ "
136 N.Y.C.	2	7 ⁷ / ₈ "
133 R.E.	2	7 ⁷ / ₈ "
132 R.E.	2	7 ⁷ / ₈ "
131 R.E.	2	7 ⁷ / ₈ "
130 P.S.	3	7 ¹ / ₄ "
127 D.Y.	4	7 ¹ / ₂ "
119 R.E.	4	7 ¹ / ₂ "
115 R.E.	3	7 ¹ / ₄ "
112 R.E.	3	7 ¹ / ₄ "
107 N.H.	5	6 ¹ / ₂ "
105 D.Y.	5	6 ¹ / ₂ "
100 P.S.	5	6 ¹ / ₂ "

NOTES


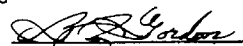
- 1-Timbers** - Use standard treated oak or mixed hard wood timbers framed as shown.
- 2-Preboring** - Drill $\frac{3}{4}$ " dia. holes in timbers for shank of drive spike. Counterbore $2\frac{1}{2}$ " dia., $1\frac{7}{8}$ " deep for head of drive spike. (Preboring may be eliminated when specified in order.) Drill $\frac{9}{16}$ " dia. hole for drive dowels.
- 3-Framing** - Assemble and secure outside timbers with dowels in shop. The framing shown in Section X-X covers only tangent tracks and does not apply to curved tracks or other special track conditions.
- 4-Branding** - Each crossing timber shall be identified on the end, with its respective designation 1-A, 1-B, etc. (depending on rail sec.) brand 4" high.
- 5-Drilling Ties** - Drill $\frac{5}{8}$ " dia. holes for threaded portion of drive spike in field.
- 6-Washer Head Timber Drive Spikes** - Use $\frac{11}{16}$ " dia. drive spikes with 6" threaded length per A.R.E.A. Manual - Plan 2M-63 (Section 5-M-4).
- 7-Steel Spiral Drive Dowel** - Use $\frac{3}{4}$ " dia. x $18\frac{3}{4}$ " long drive dowels.
- 8-Ordering** - The required number of timbers for a complete crossing shall be based on the lengths of timber as shown on this plan. However, field saw cuts and drilling may be necessary to give proper crossing length.
- 9-Order As Follows** -
Prefabricated timbers for Black Top Highway Weight of rail through crossing Number of flangeway timbers "A" Number of outside timbers (2 outside timbers considered as 1 timber) "B"
- 10-Black Topping** -
Black Top area is to be filled with ballast. 4" Black Top is to consist of 2" of coarse grade black top properly rolled and 2" of surface grade black top properly rolled to the entire track area. All approaches are to be properly feathered a minimum of 3" per inch of track raise above Road Surface.

CONRAIL 70123-B

STANDARD

**PREFABRICATED TIMBERS FOR
BLACK TOP HIGHWAY GRADE CROSSINGS**

DECEMBER, 1978

 Chief Engineer - Maintenance of Way
 Chief Engineering Officer