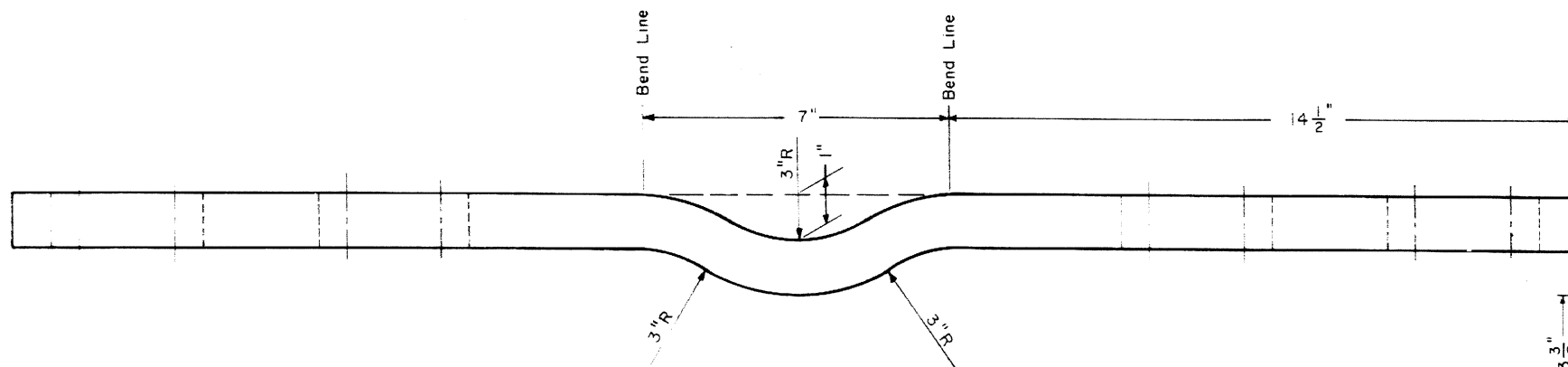
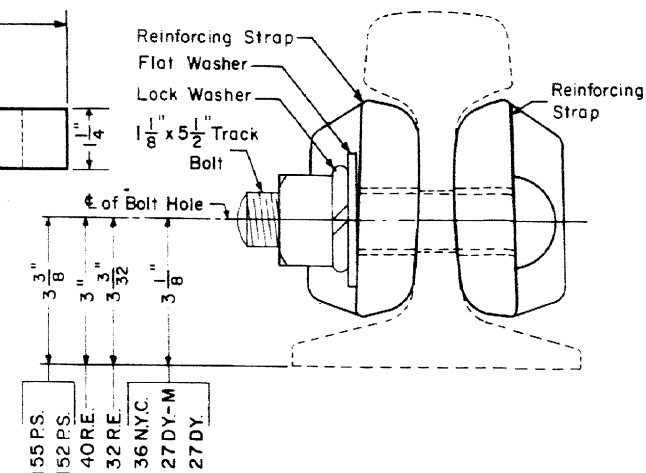


Superseded Plans 66526-B, 66529-A, 66550-B

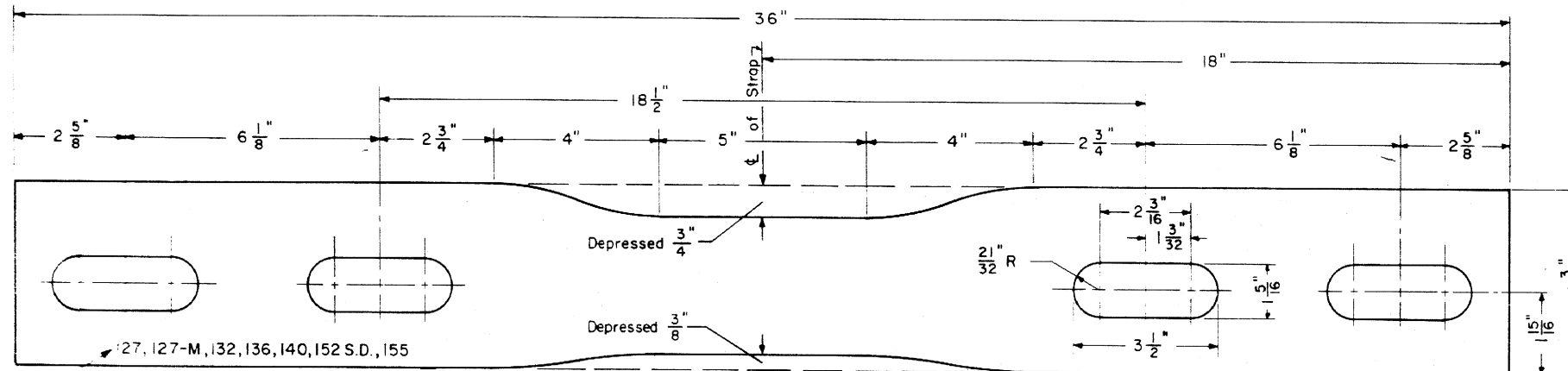


**TOP VIEW**

**Special Conditions For 132Lb.R.E.  
And 152Lb.P.S. Rails. See Notes Below**

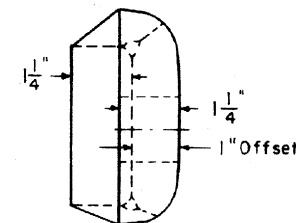


**STRAP ASSEMBLY**



**SIDE VIEW**

← Strap to be stamped 127, 127-M, 132 (see note No.3), 136, 140, 152 S.D. (see note No.4) and 155 as shown.



**END VIEW**

**NOTES**

- 1 - Reinforcing straps are to be forged from 119 lb. switch point reinforcing bar material.
- 2 - Reinforcing straps shall conform to current A.R.E.A. "Specifications For Rolled Mild Steel."
- 3 - This strap may be used on 132 lb. R.E. rail only when rail has standard drilling (9 1/2"-6", 2nd and 3rd holes). For other drilling, 8 23/32"-7" (same as 131 R.E.) see C.R. Plan 71202-(-).
- 4 - Reinforcing strap to be used when 152 lb. P.S. rail has the same drilling as the 155 lb. P.S. rail (3 3/8" above base of rail). S.D. denotes "Same Drilling as 155 P.S." to be stamped on strap as shown above.

**CONRAIL 71201-A**

STANDARD  
**REINFORCING STRAP FOR FIELD WELDS**  
WITH 127 DY, 127 DY-M, 132 R.E., 136 N.Y.C.  
140 R.E., 152 P.S. and 155 P.S. RAILS  
MARCH, 1977

*R.H. Smith*  
Chief Engineer - Maintenance of Way
*J.P. Gordon*  
Chief Engineering Officer