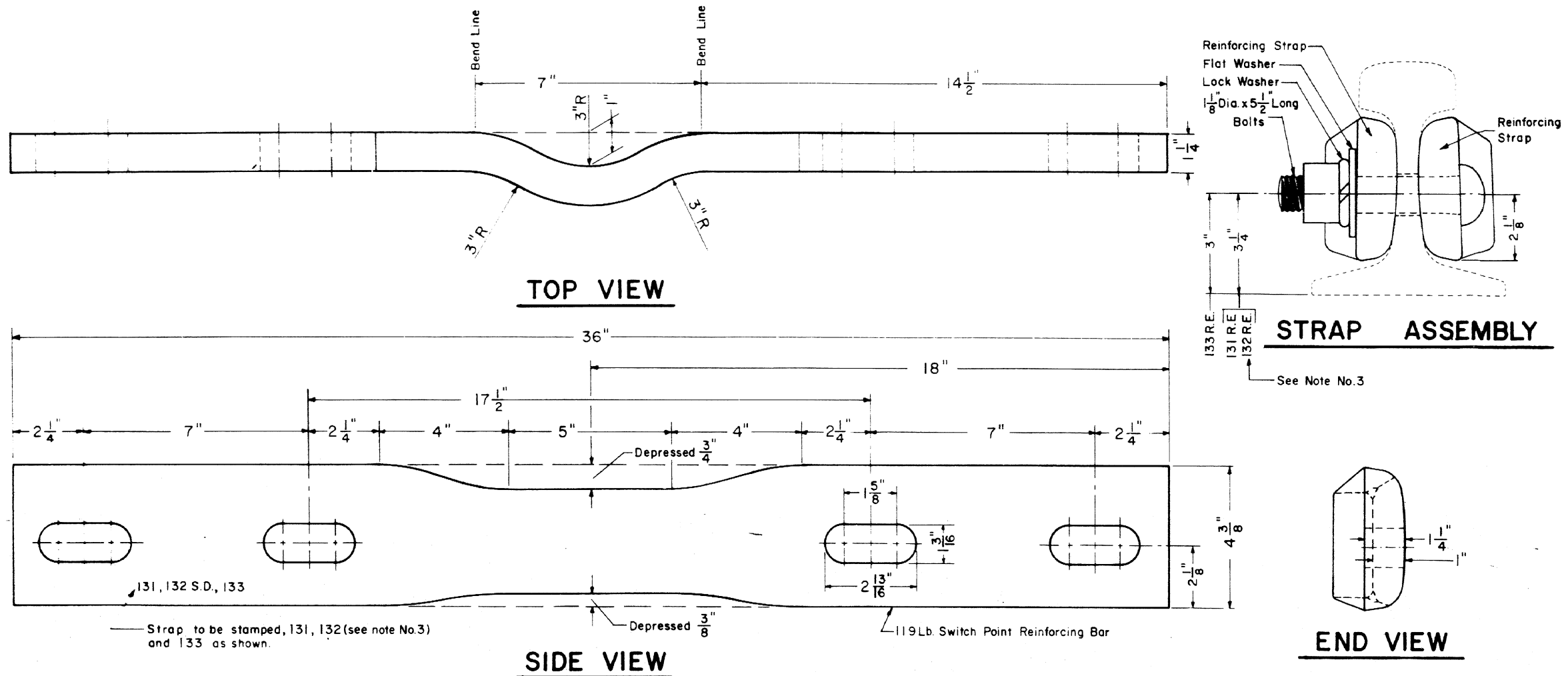


Supersedes Plan 66528-B



Strap to be stamped, 131, 132 (see note No.3) and 133 as shown.

See Note No.3

NOTES

- 1- Reinforcing straps are to be forged from 119lb switch point reinforcing bar material.
- 2- Reinforcing strap shall conform to current A.R.E.A. "Specifications For Rolled Mild Steel."
- 3- Reinforcing strap to be used when 132lb R.E rail has the same drilling as the 131lb R.E rail (8 ²³/₃₂" - 7", 2nd and 3rd holes). S.D., denotes "Same Drilling as 131 R.E.", to be stamped on strap as shown above. For other drilling of 132lb R.E rail (9 1/2" - 6", 2nd and 3rd holes) see C.R. Plan 71201-1.

Special Condition For 132Lb. R.E. Rail

See Note No.3

CONRAIL 71202-A

STANDARD
REINFORCING STRAP FOR FIELD WELDS
WITH 131 R.E., 132 R.E. and 133 R.E. RAILS

MARCH, 1977

Chief Engineer - Maintenance of Way

Chief Engineering Officer