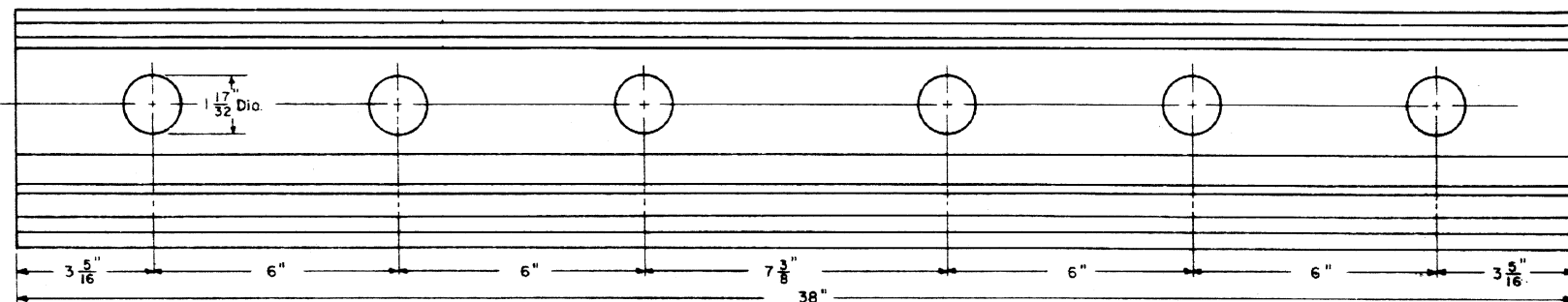
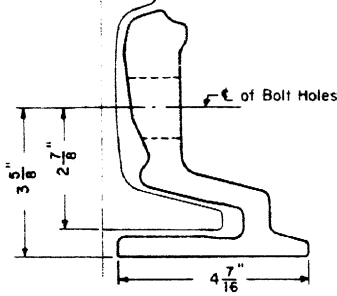
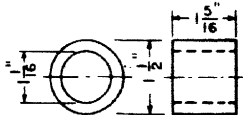


JOINT BAR ASSEMBLY

Assemble Joint With Nuts Alternate

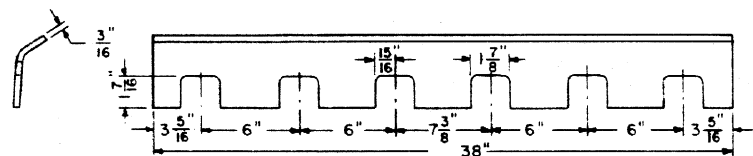


ELEVATION OF JOINT BAR



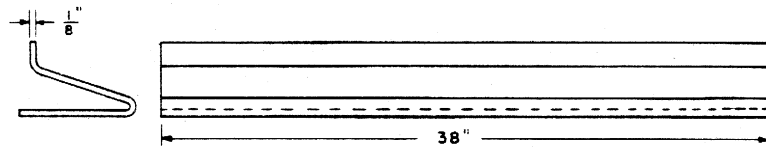
FIBER BUSHING

Part No. 7629-D



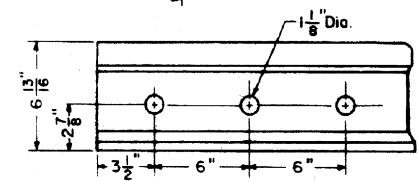
FIBER HEAD PIECE

Part No. 1393



FIBER BASE PIECE

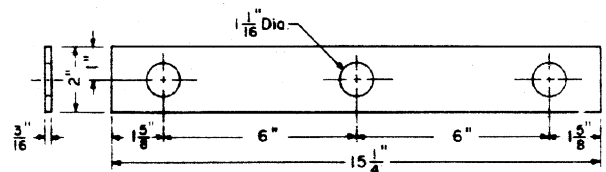
Part No. 71483 K2



RAIL END DRILLING

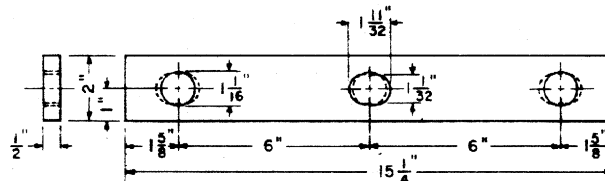
NOTE

All part numbers shown are per Portec, Inc. Plan 22-628, dated May 1, 1969.



FIBER WASHER PLATE

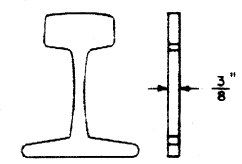
Part No. 78761-B



STEEL WASHER PLATE

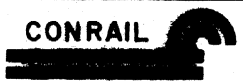
Part No. 78381-A

Steel washer plates are to be punched in pairs per solid and dashed lines.



FIBER END POST

Part No. 1680

CONRAIL  **71364-A**

STANDARD

CONTINUOUS INSULATING JOINT FOR 119 R.E. RAIL

MANUFACTURED BY PORTEC, INC.

SEPTEMBER, 1976

R.H. Smith Chief Engineer - Maintenance of Way
A.D. Carlson Chief Estimating Officer