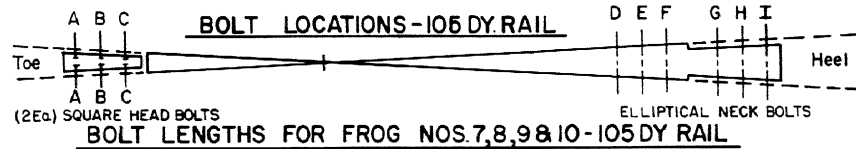


Revisions

- "B"- Oct., 1980
- "C"- Oct., 1982
- D -Sept., 1985
- E -Sept., 1986



BOLT LENGTHS FOR FROG NOS. 7, 8, 9 & 10 - 105 DY RAIL

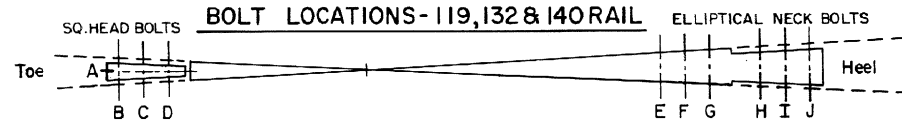
FROG NO.	BOLT DIA.	BOLTS LETTERED IN ORDER-TOE TO HEEL OF FROG								
		SQUARE HEAD			ELLIPTICAL NECK					
		A	B	C	D	E	F	G	H	I
LENGTH "L" UNDER HEAD (INCHES)										
7	*	9	9	8	10	11	11	12	13	14
8	See Note Below	9	9	8	10	11	11	12	13	14
9		9	9	8	10	10	11	11	12	13
10		9	9	8	10	10	11	12	12	13

* Square head bolts are 1" dia.
Elliptical neck bolts are 7/8" dia.

SQ. HEAD BOLTS - 105 DY.

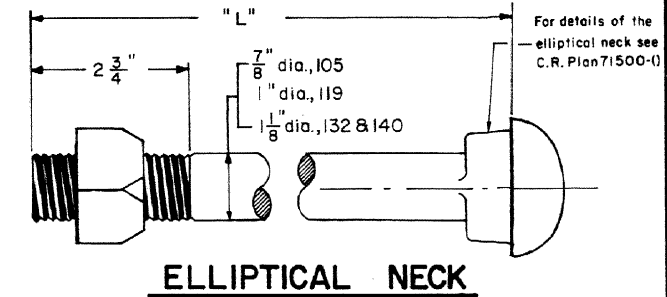
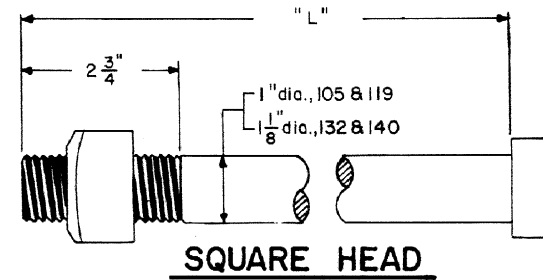
LENGTH (1" DIA)	ACCOUNT AND REFERENCE NOS.
8"	01-147204
9"	01-147907

LENGTH (7/8" DIA.)	ACCOUNT AND REFERENCE NOS.
10"	01-143856
11"	01-143872
12"	01-143898
13"	01-143914
14"	01-143930



BOLT LENGTHS FOR FROG NOS. 6, 8 & 10 - 119, 132 & 140 LB. RAIL

FROG NO.	RAIL SECTION	BOLT DIA.	BOLTS LETTERED IN ORDER-TOE TO HEEL OF FROG											
			SQUARE HEAD				ELLIPTICAL NECK							
			A	B	C	D	E	F	G	H	I	J		
LENGTH "L" UNDER HEAD (INCHES)														
6		1"	24	26	24	21	10	11	12	13	14	15		
8	119	1"	24	25	22	20	12	12	13	14	14	15		
10		1"	25	25	22	20	12	12	13	14	14	15		
6		1 1/8"	24	26	24	21	10	11	12	14	14	15		
8	132	1 1/8"	24	25	22	20	12	13	13	14	15	14		
10		1 1/8"	24	24	22	20	12	12	13	14	14	15		
6		1 1/8"	24	27	24	21	11	12	13	14	15	16		
8	140	1 1/8"	25	25	22	20	12	12	13	14	15	15		
10		1 1/8"	24	25	22	20	12	13	13	14	14	15		



FROG BOLTS

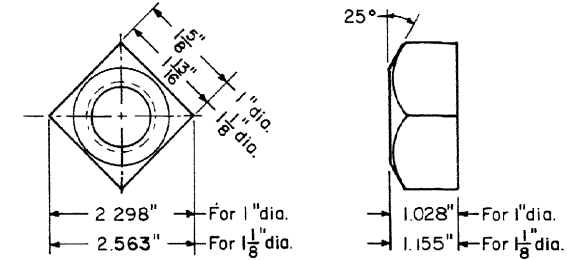
ACCOUNT & REFERENCE NUMBERS

**SQUARE HEAD BOLTS
1" Dia. - 119 R.E.**

LENGTH	ACCOUNT AND REFERENCE NOS.
20"	01-155603
21"	01-156304
22"	01-156320
24"	01-158409
25"	01-156346
26"	01-156361

**ELLIPTICAL NECK BOLTS
1" Dia. - 119 R.E.**

LENGTH	ACCOUNT AND REFERENCE NOS.
10"	01-204609
11"	01-206000
12"	01-207404
13"	01-208808
14"	01-210200
15"	01-144631



HEAVY SQUARE NUT

NOTES

- 1- Bolts and nuts shall conform to current Conrail MW 184 Specs. and details on this plan. All threads to be cut threads.
- 2- All nuts to be free fit and Medium Carbon Steel. Spring washers shall conform to current Conrail MW 186 Specs.
- 3- Bolts for frogs 119 lb. or lighter shall be 1" dia., except 105 DY which is 7/8" dia. Bolts for frogs heavier than 119 lb. shall be 1 1/8" dia.
- 4- All bolts shall be dipped in NO-OX-ID "GG" grease manufactured by Dearborn Chemical Co.

CONRAIL 71502-E

STANDARD

REPLACEMENT BOLTS

FOR SELF-GUARDED FROGS

JANUARY, 1980

Chief Engineer - Maintenance of Way

Chief Engineering Officer