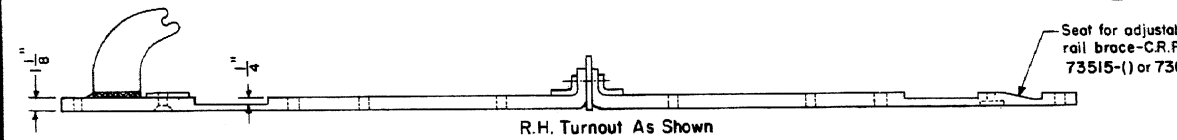
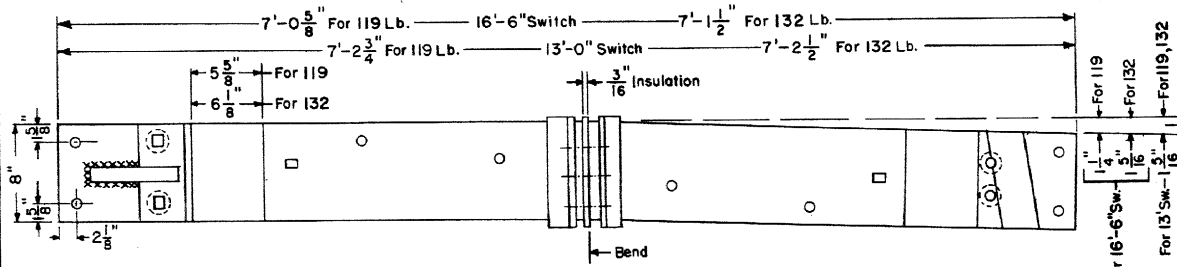
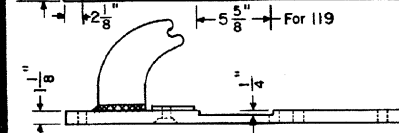
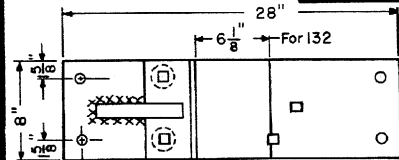


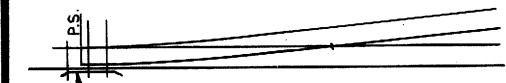
This Plan supersedes Plan No. W-222-A dated Sept. 1976



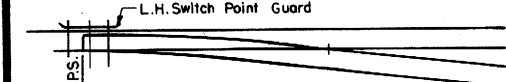
**GAGE PLATE "G1"-INSULATED-TYPE "B"**



**PLATE "B"**



**L.H. TURNOUT**



**R.H. TURNOUT**

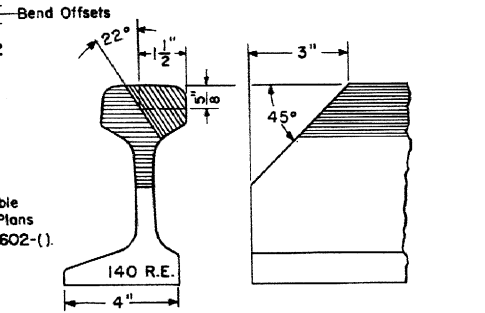


**EQUILATERAL TURNOUT**

L.H. or (R.H.) Switch Point Guard shall be placed to protect the heavy traffic side.

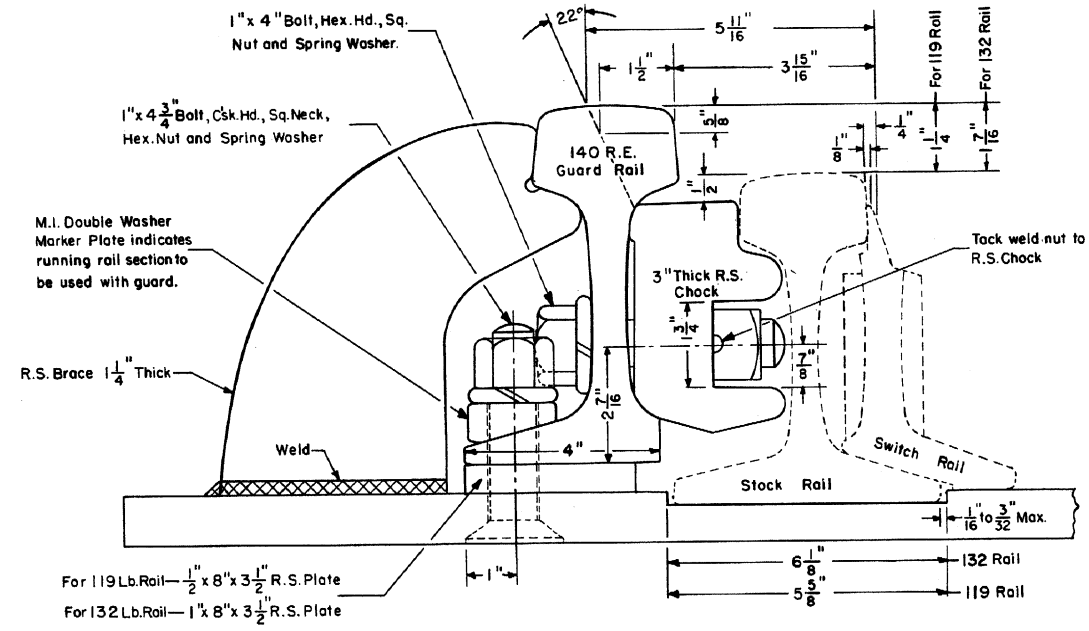
**NOTE**— All switch point guards are located to protect the diverging point.

**SWITCH POINT GUARD DESIGNATIONS**

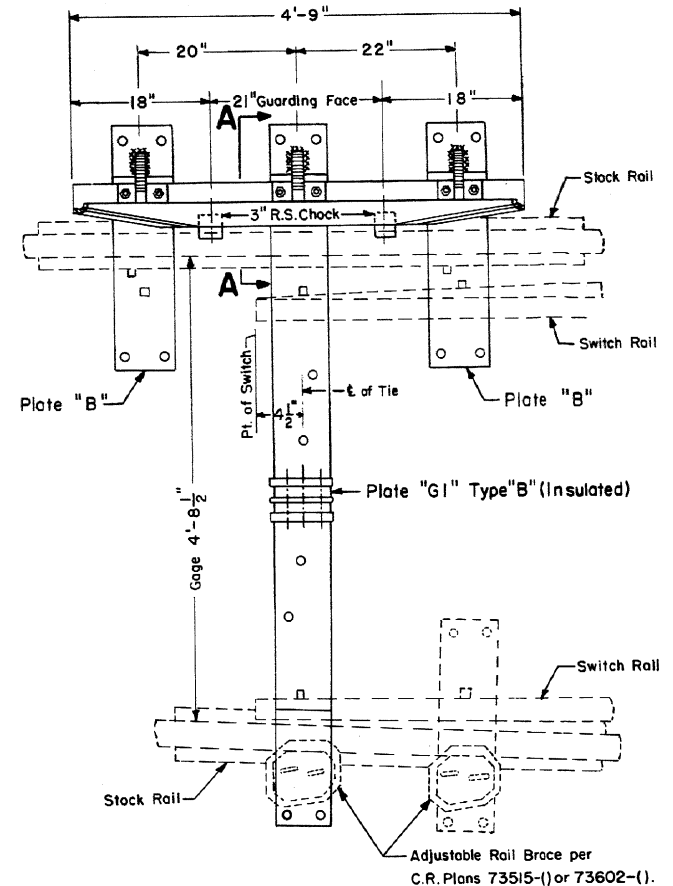


**PLANING OF GUARD ENDS**

Manufactured by Bethlehem Steel Corporation - Steelton, Pa.  
Design 755-BT



**SECTION A - A (TYPICAL)**



**PLAN**

- NOTES**
- 1-All plates to be open hearth mild steel.
  - 2-All guard rails heat treated and oil quenched to a Brinell Hardness of 321 to 388.

**CONRAIL 71812-A**

STANDARD

**SWITCH POINT GUARD**

FOR 13' or 16'-6" SWITCHES— 119 or 132 RAIL

R. H. Smith JUN 1979

Chief Engineer - Maintenance of Way

*Robert Gordon*  
Chief Engineering Officer