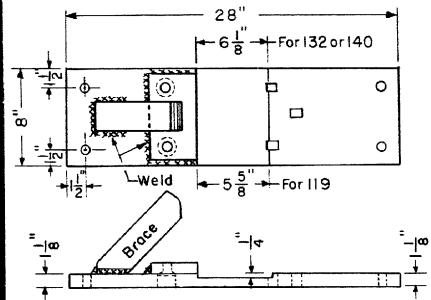
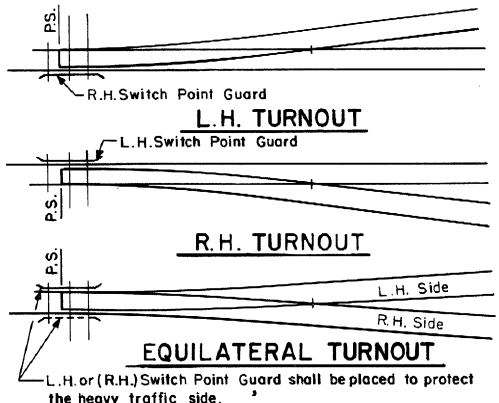


GAGE PLATE "16"-INSULATED

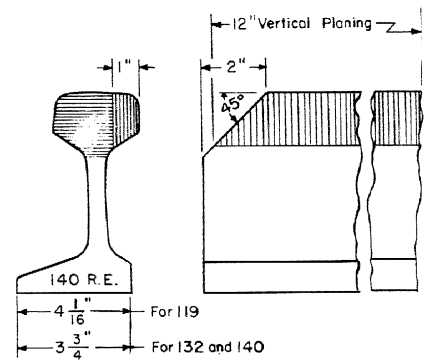


SLIDE PLATE "SP"



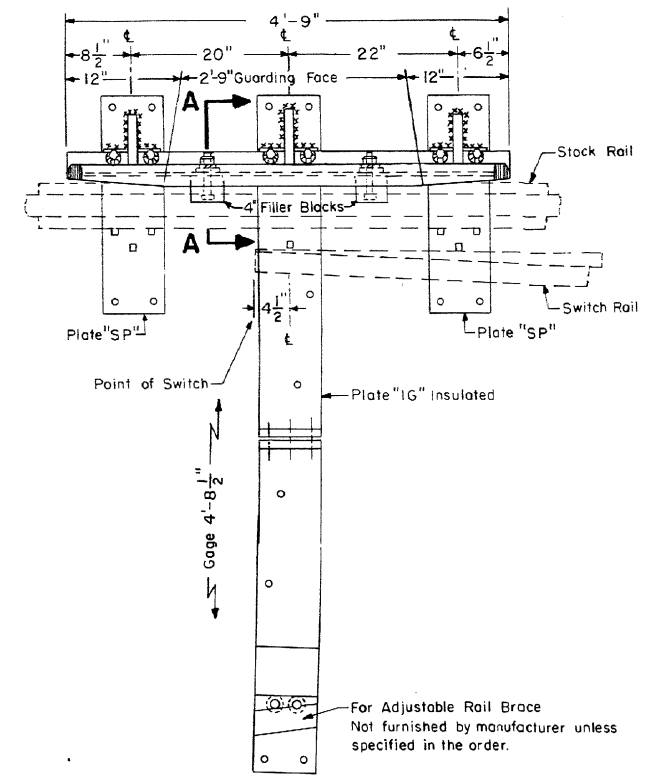
NOTE:-
All switch point guards are located to protect the diverging point.

SWITCH POINT GUARD DESIGNATIONS



PLANING OF GUARD ENDS

Manufactured By Pettibone-Ohio
(Formerly Cleveland Frog & Crossing Co.)

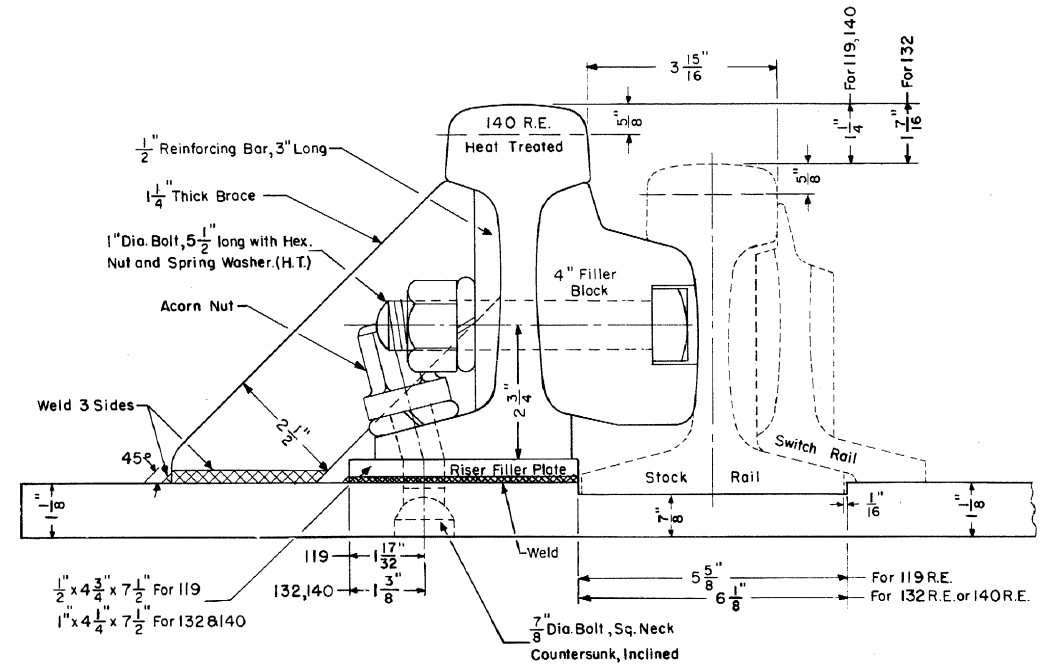


PLAN

R.H. Turnout As Shown

NOTES

- 1- All plates to be open hearth mild steel.
- 2- All guard rails heat treated and oil quenched to a Brinell Hardness of 321 to 375.
- 3- All plates to be stamped with plate designation and rail section. The gage plate to be also stamped with hand and length of switch rail.
- 4- When a non-insulated gage plate is required, the gage plate shall be furnished solid.
- 5- When ordering switch point guard specify- weight of rail, length of switch rail and hand.



SECTION A-A (TYPICAL)

CONRAIL 71813-B

STANDARD

SWITCH POINT GUARD

FOR 13' or 16'-6" SWITCHES-119 or 132 RAIL

OCTOBER, 1978

R.H. Smith

Chief Engineer - Maintenance of Way

G.A. Gordon

Chief Engineering Officer