

Revisions
A-April, 1978

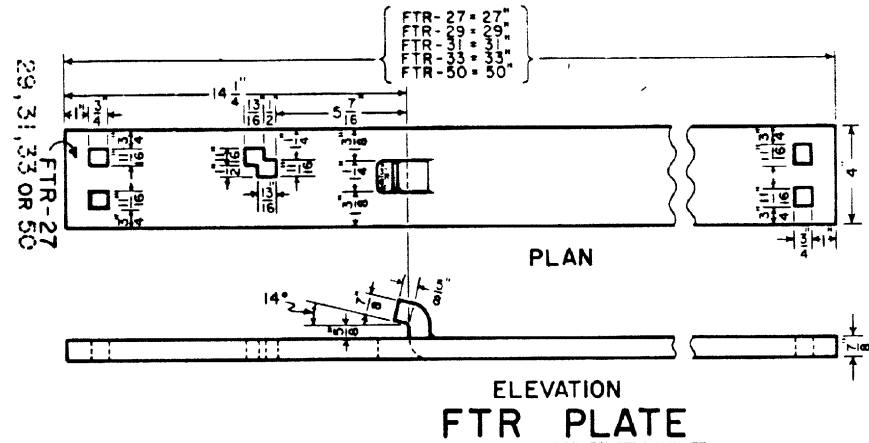
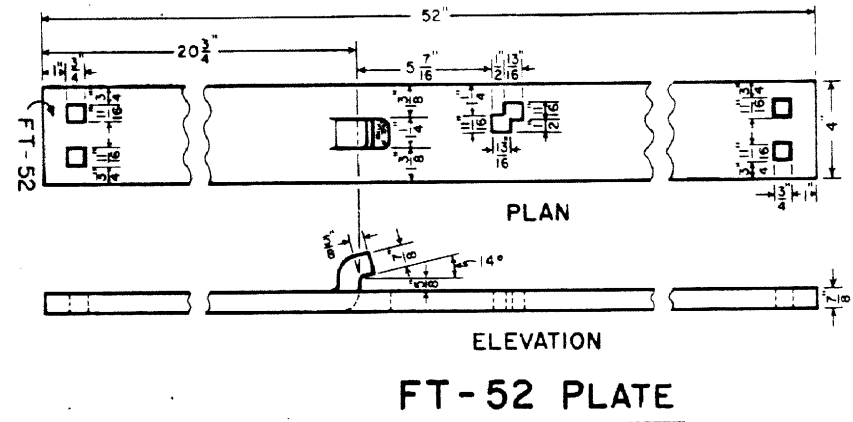
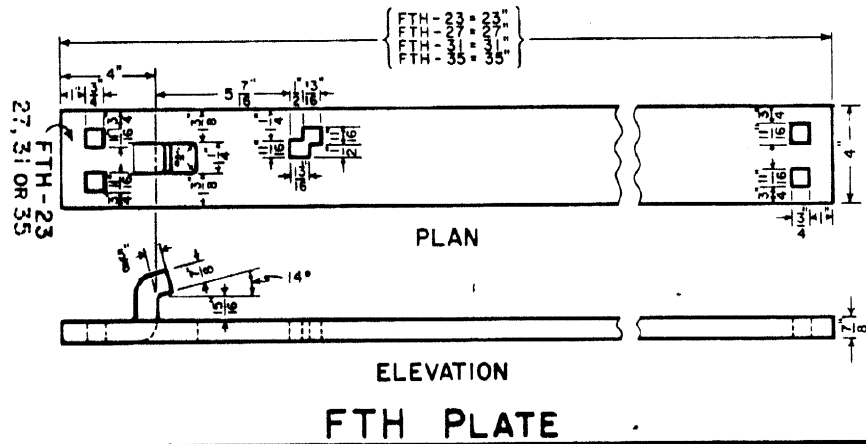
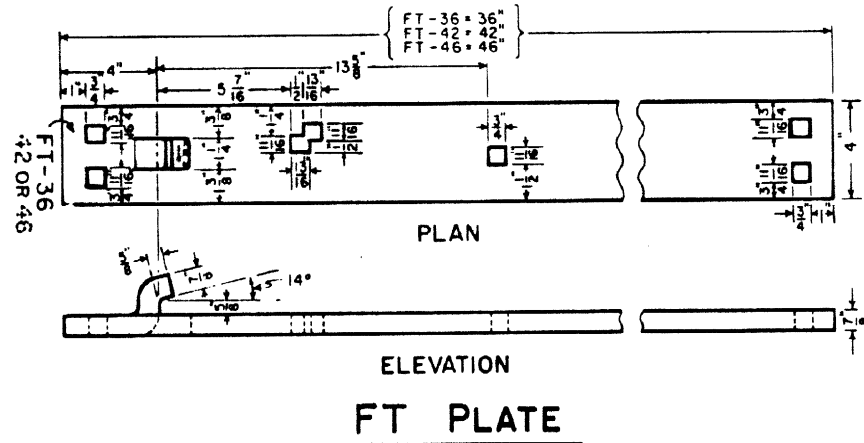
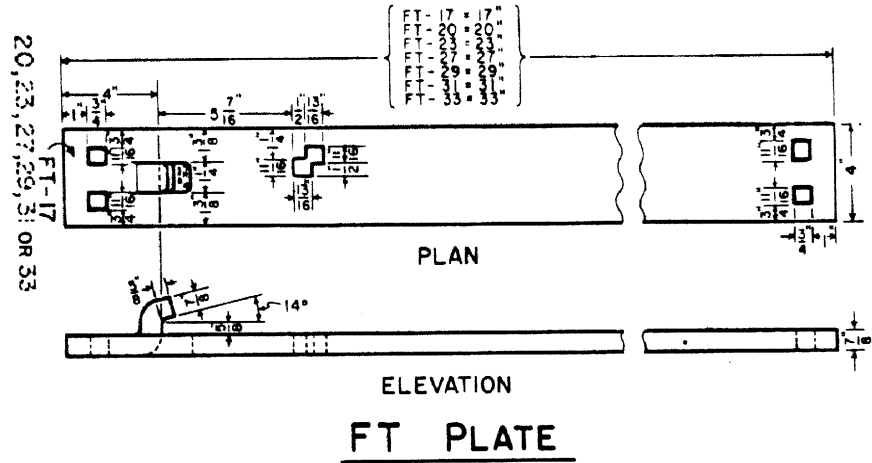
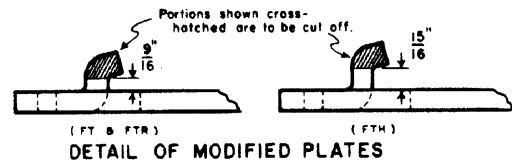


PLATE DESIGNATION

- FT = Frog Tie Plate
- FTH = Frog Tie Plate (High Hook)
- FTR = Frog Tie Plate (Reverse Hook)
- FT-MOD. } Modified plates will
- FTH-MOD. } have the hook cut back
- FTR-MOD. } as detailed below.



Note
Where hook on Frog Tie Plate will impinge upon base of frog or base of joint bar, the Frog Tie Plate must be modified as detailed.

NOTES

- Plates shall conform to the current A.R.E.A. Specifications for Low-Carbon Steel Tie Plates, with copper.
- Each plate shall be marked by deeply cut characters, not less than one half inch high, in the position as indicated on this plan, with the plate designation as shown.

72105-B

CONRAIL

STANDARD

FROG TIE PLATES

FOR USE UNDER FROGS AND CROSSINGS
FOR 119.R.E., 132.R.E. or 140.R.E. RAIL
SEPTEMBER, 1976

R.H. Smith
Chief Engineer - Maintenance of Way

[Signature]
Chief Engineering Officer