

PLT.	A	L	X	Y
15-3	7 ⁵ / ₈ "	27 ¹ / ₂ "	1 ¹ / ₁₆ "	1 ⁵ / ₁₆ "
15-4	8 ¹ / ₄ "	28 ¹ / ₄ "	3 ³ / ₃₂ "	2 ³ / ₃₂ "
15-5	8 ⁷ / ₈ "	29"	1 ¹ / ₈ "	7 ⁷ / ₈ "

PLT.	A	L	X	Y
15-6	9 ¹ / ₂ "	29 ³ / ₄ "	5 ³ / ₃₂ "	2 ¹ / ₃₂ "
15-7	10 ¹ / ₈ "	30 ¹ / ₂ "	3 ¹ / ₁₆ "	1 ³ / ₁₆ "
15-8	10 ³ / ₁₆ "	31 ¹ / ₄ "	3 ³ / ₃₂ "	2 ³ / ₃₂ "

B = 1/8"

PLATES 3 THRU 8 FOR NO.15 TURNOUT

PLT.	A	L	X	Y
20-3	7 ¹ / ₄ "	27"	1 ¹ / ₁₆ "	1 ⁵ / ₁₆ "
20-4	7 ¹ / ₁₆ "	27 ¹ / ₂ "	3 ³ / ₃₂ "	2 ³ / ₃₂ "
20-5	8 ¹ / ₈ "	28"	1 ¹ / ₈ "	7 ⁷ / ₈ "

PLT.	A	L	X	Y
20-6	8 ³ / ₁₆ "	28 ¹ / ₂ "	5 ³ / ₃₂ "	2 ¹ / ₃₂ "
20-7	9 ³ / ₃₂ "	29"	3 ¹ / ₁₆ "	1 ³ / ₁₆ "
20-8	9 ¹ / ₂ "	29 ¹ / ₂ "	3 ³ / ₃₂ "	2 ³ / ₃₂ "

B = 3/32"

PLATES 3 THRU 8 FOR NO.20 TURNOUT

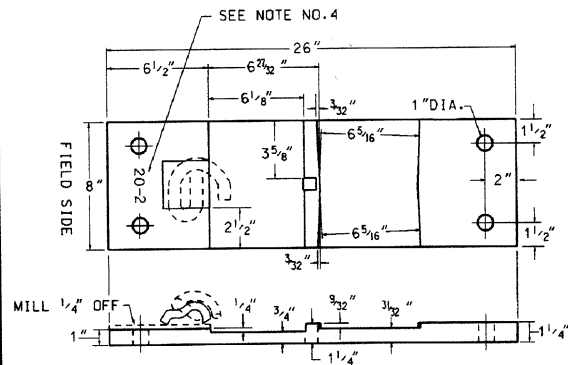
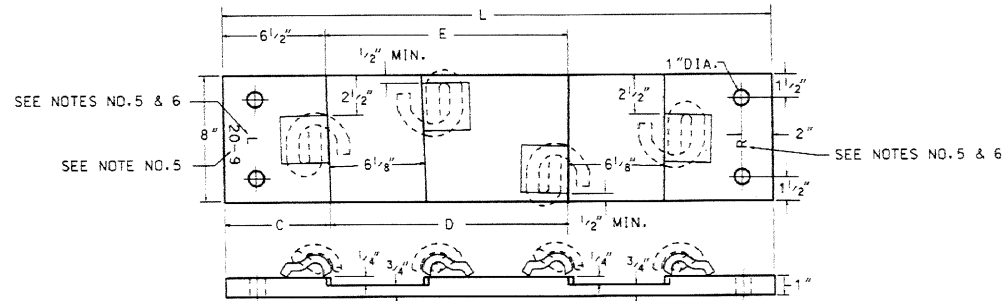


PLATE 2 FOR NO.20 TURNOUT



PLT.	D	E	L	C
15-9	11 ³ / ₈ "	11 ⁵ / ₈ "	31 ¹ / ₂ "	6 ⁵ / ₈ "
15-10	12 ¹ / ₁₆ "	12 ⁹ / ₁₆ "	32 ¹ / ₄ "	6 ⁵ / ₈ "
15-11	12 ³ / ₁₆ "	13 ¹ / ₁₆ "	33"	6 ⁵ / ₈ "

PLT.	D	E	L	C
15-12	13 ³ / ₁₆ "	13 ¹ / ₈ "	33 ³ / ₄ "	6 ³ / ₃₂ "
15-13	14 ³ / ₁₆ "	14 ⁵ / ₈ "	34 ¹ / ₂ "	6 ³ / ₃₂ "
15-14	15 ¹ / ₁₆ "	15 ³ / ₈ "	35 ¹ / ₄ "	6 ³ / ₃₂ "

PLATES 9 THRU 14 FOR NO.15 TURNOUT

PLT.	D	E	L	C
20-9	9 ³ / ₃₂ "	10 ³ / ₃₂ "	30"	6 ³ / ₃₂ "
20-10	10 ³ / ₈ "	10 ⁹ / ₁₆ "	30 ¹ / ₂ "	6 ³ / ₃₂ "
20-11	10 ⁷ / ₈ "	11 ¹ / ₁₆ "	31"	6 ³ / ₃₂ "
20-12	11 ¹ / ₃₂ "	11 ¹ / ₃₂ "	31 ¹ / ₂ "	6 ³ / ₃₂ "
20-13	11 ¹ / ₃₂ "	12 ¹ / ₃₂ "	32"	6 ³ / ₃₂ "
20-14	12 ¹ / ₁₆ "	12 ³ / ₃₂ "	32 ¹ / ₂ "	6 ⁵ / ₈ "

PLT.	D	E	L	C
20-15	13"	13 ³ / ₁₆ "	33"	6 ⁵ / ₈ "
20-16	13 ³ / ₁₆ "	13 ³ / ₄ "	33 ¹ / ₂ "	6 ⁵ / ₈ "
20-17	14 ¹ / ₈ "	14 ¹ / ₃₂ "	34"	6 ⁵ / ₈ "
20-18	14 ¹ / ₁₆ "	14 ¹ / ₁₆ "	34 ¹ / ₂ "	6 ⁵ / ₈ "
20-19	15 ¹ / ₄ "	15 ¹ / ₃₂ "	35"	6 ⁵ / ₈ "
20-20	15 ¹ / ₁₆ "	16 ¹ / ₈ "	35 ¹ / ₂ "	6 ⁵ / ₈ "

PLATES 9 THRU 20 FOR NO.20 TURNOUT

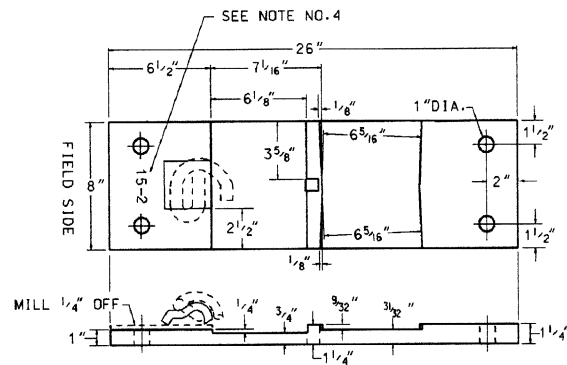


PLATE 2 FOR NO.15 TURNOUT

NOTES

- 1-Turnout plates shall conform to current AREA Specifications for low-carbon steel tie plates with copper.
- 2-Each plate shall be marked by deeply cut characters, not less than 1/2" high, with plate number and rail designation in the position indicated on this plan.
- 3-All plates are to be stamped with prefix 15 or 20 (15 for a No.15 turnout or 20 for a No.20 turnout) then a dash followed by the plate number.
- 4-Plates No.2 thru No.8 shall be stamped on the field end of the plate.
- 5-Plates No.9 thru No.20 shall have the plate number stamped on the "L" end of the plate with "L" on the field end behind a left hand point and "R" on the opposite end.
- 6-Plates No.9 thru No.20 are to be placed with "L" on the field side behind a left hand point and "R" on the field side behind a right hand point. This applies to either a RH or LH Turnout.
- 7-All round plate holding holes for screw spikes are to be 1" dia. All rail holding holes for track spikes are to be 3/4" x 1 3/16" with 1/16" of the 1 3/16" dimension to be under the rail base.
- 8-Welds must not project beyond the vertical face of the rail seat.



CONRAIL 72225-B

STANDARD
TURNOUT PLATES

NO.15 & NO.20 TURNOUTS 136-RE

(PANDROL FASTENERS)

JANUARY, 1995

W. J. Heide

B. J. Willhant

DIR. - STANDARDS & TRACK ANALYSIS

CHIEF ENGINEER