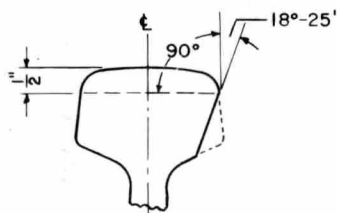
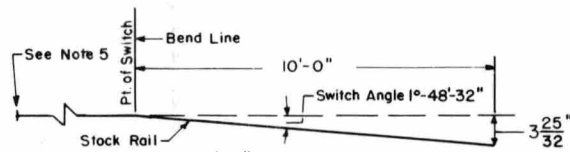


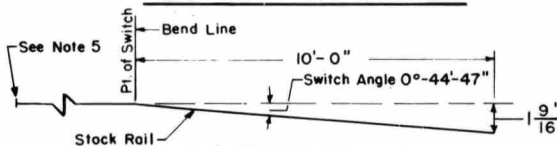
**NO HAND
60 FT. UNDERCUT STOCK RAIL**



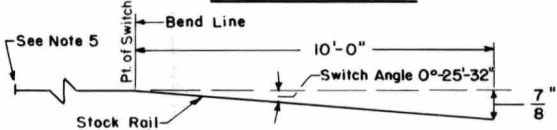
DETAIL OF UNDERCUT



No. 8 and No. 10 Turnouts



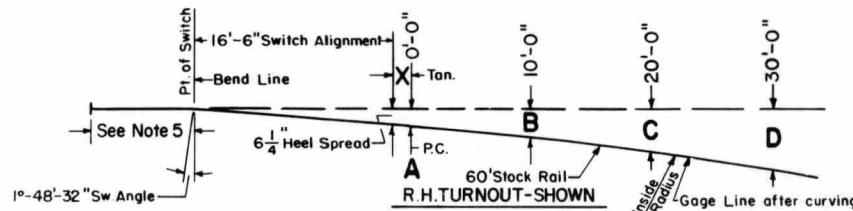
No. 15 Turnout



No. 20 Turnout

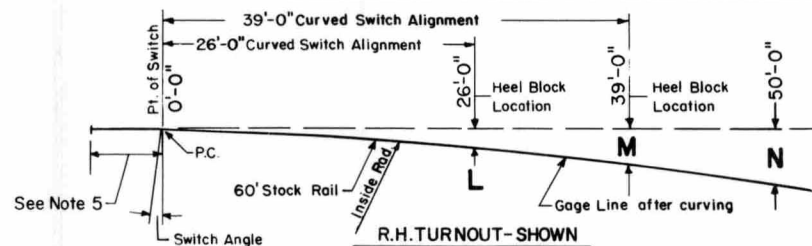
BENDING OF STOCK RAILS

(See Notes 4 & 5)



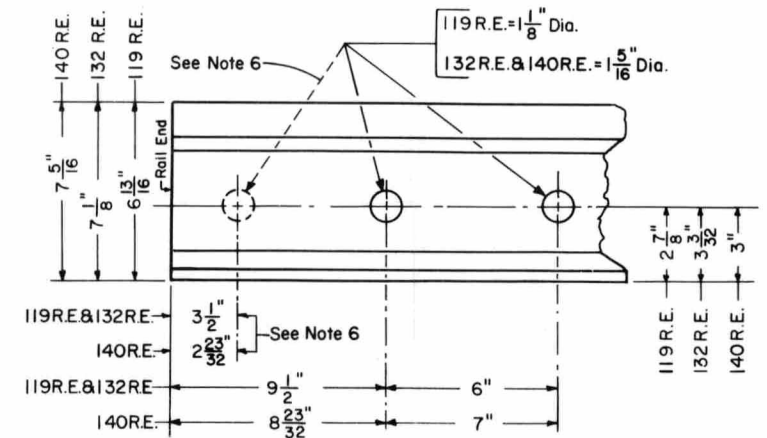
TURNOUT NO.	SWITCH ALIGNMENT	INSIDE RADIUS	X TAN. DIST.	OFFSETS			
				A	B	C	D
8	16'-6" Straight	460.372'	17 7/8"	6 13/16"	11 7/8"	19 9/16"	29 3/4"
10	16'-6" Straight	722.80'	18"	6 13/16"	11 3/8"	17 21/32"	25 9/16"

**No. 8 and No. 10 TURNOUTS
OFFSETS FOR CURVING 60' STOCK RAIL**



TURNOUT NO.	SWITCH ALIGNMENT	SWITCH ANGLE	INSIDE RADIUS	OFFSETS		
				L	M	N
15	26'-0" Curved	0°-44'-47"	1851.061'	6 1/4"	—	15 29/32"
20	39'-0" Curved	0°-25'-32"	3286.978'	—	6 1/4"	9"

**No. 15 and No. 20 TURNOUTS
OFFSETS FOR CURVING 60' STOCK RAIL**




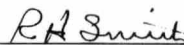
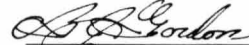
RAIL END DRILLINGS

NOTES

- 1 - Rail to conform to current A.R.E.A. specifications.
- 2 - Stock rails to be end hardened.
- 3 - Undercut to be on the opposite side of the rail brand.
- 4 - Stock rails are to be bent or curved in the field by C.R. personnel.
- 5 - Initial bend line location of stock rail will vary according to the stock rail distance desired ahead of the point of switch. The distance ahead of the point of switch to the end of the stock rail shall conform, whenever possible, to C.R. Standard Plans :-

TURNOUT NO.	PLAN NO.	SWITCH ALIGNMENT	STOCK RAILS AHEAD OF POINT	
			STRAIGHT	CURVED
8	73180(-)	16'-6"	13'-5 1/4"	8'-6 3/4"
10	73181(-)	16'-6"	13'-5 1/4"	6'-11 1/4"
15	73182(-)	26'-0"	11'-9 3/4"	5'-3 3/4"
20	73183(-)	39'-0"	10'-2 1/4"	5'-3 3/4"

- 6 - When stock rail ends are not to be field welded, the first bolt hole shall be drilled in the field by C.R. personnel.


73062-A
 STANDARD
60' UNDERCUT STOCK RAILS-119, 132 & 140
 FOR NOS. 8, 10, 15 & 20 WELDED TURNOUTS AND
 MAINTENANCE REPLACEMENTS IN EXISTING TURNOUTS
 JUNE, 1977
 Chief Engineer - Maintenance of Way
 Chief Engineering Officer