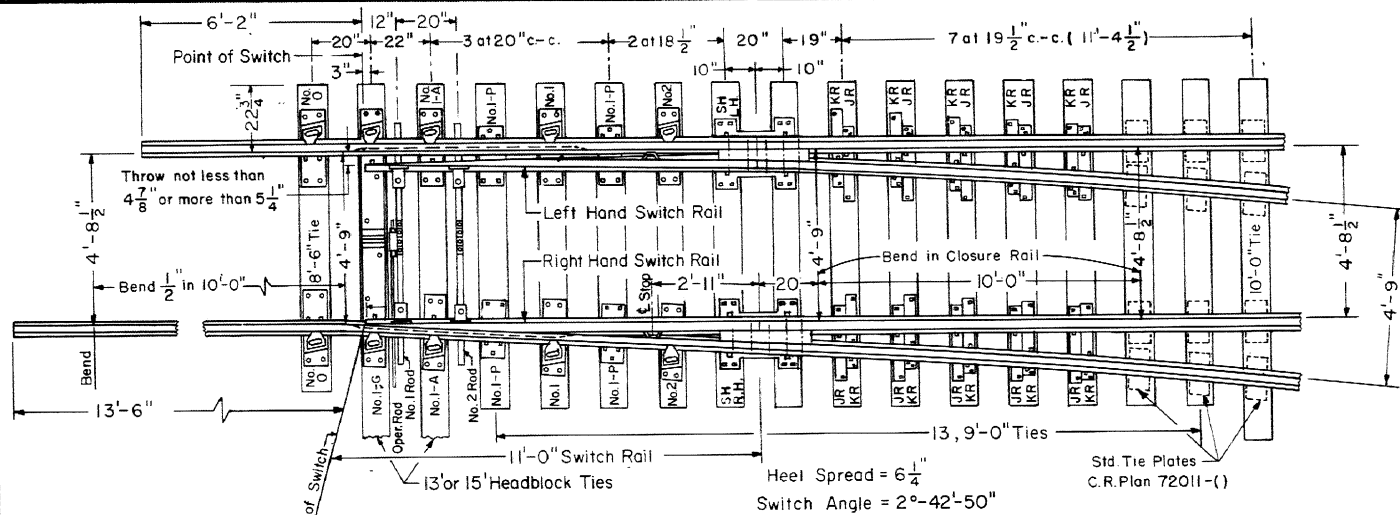
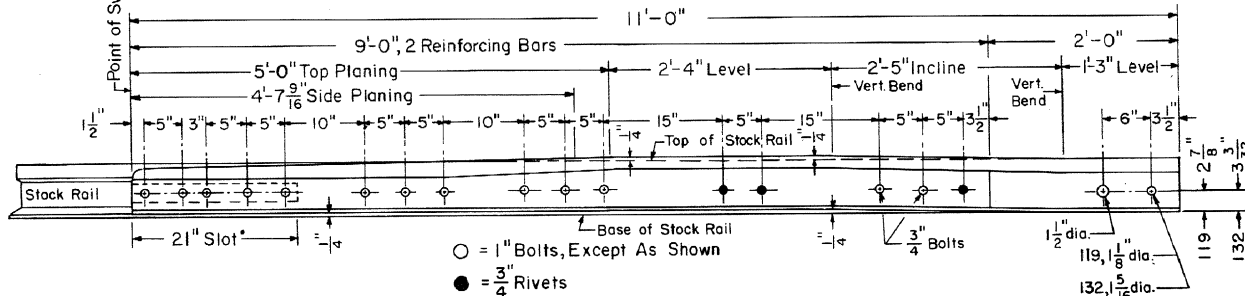


Revisions

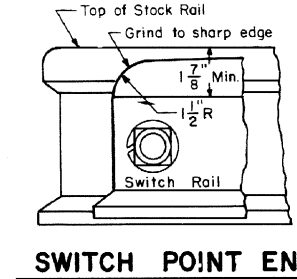
A - Feb., 1981  
 B - May, 1981



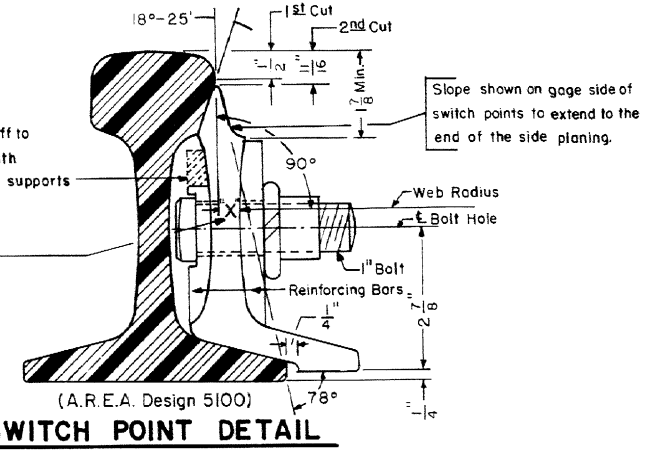
PLAN OF RIGHT HAND SWITCH LAYOUT



ELEVATION OF SWITCH RAIL



SWITCH POINT END

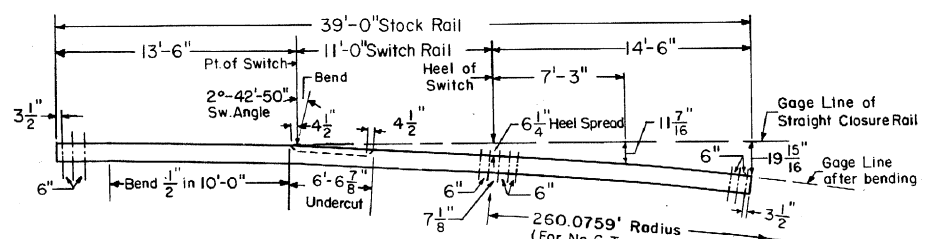


BILL OF MATERIAL

- 1-Pair 11'-0" Straight Switch Points, complete with reinforcing bars, side jaw clips and rail stops attached.
- \* 1-39'-0" Straight Stock Rail, L.H. Undercut
- \* 1-39'-0" Bent Stock Rail, R.H. Undercut
- ▲ 2-Horizontal Switch Rods, with basket. See C.R. Plan 73521-(-). See Note No.5
- 2-Heel Block Assemblies, complete. See C.R. Plan 73602-(-) 119; Plan 73515-(-) 132
- 1-No. 1-G Insulated Gage Plate
- 2-No. 0 Adjustable Brace Side Plate
- 2-No. 1-A " " " " See C.R. Plan 73501-(-) 119
- 4-No. 1 " " " " See C.R. Plan 73515-(-) 132
- 2-No. 2 " " " " See C.R. Plan 73515-(-) 132
- 6-No. 1-P Shoulder Slide Plate
- 2-SH Heel Plates (I.R.H. & I.L.H.)
- 12-Adjustable Rail Braces, Type A, complete. See C.R. Plan 73602-(-) 119
- 2-Switch Stops See C.R. Plan 73515-(-) 132
- ▲ 4-Side Jaw Clips for horizontal switch rods. See C.R. Plan 73521-(-). See Note No.5

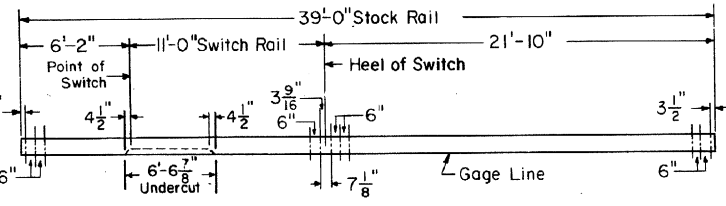
NOTES

- 1- This plan is for use with A.R.E.A. recommended standards for 119 lb.
- 2- Workmanship and materials, including beveling and hardening rail ends, shall be as per current A.R.E.A. Specifications.
- 3- All bolts shall be dipped immediately before applying (all threads are thoroughly coated) in NO-OX-ID "GG" grease, manufactured by Dearborn Chemical Co.
- \* 4- When ordering a Left Hand Switch-these items shall be opposite hand.
- ▲ 5- 132 lb. rail use vertical switch rods and rocker clips. See C.R. Plan 73518-(-).
- 6- Stock rails and switch points to be fully heat treated. 119 and 132 lb. rail.



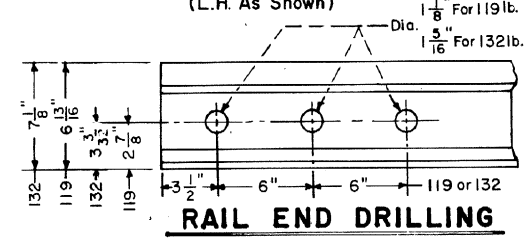
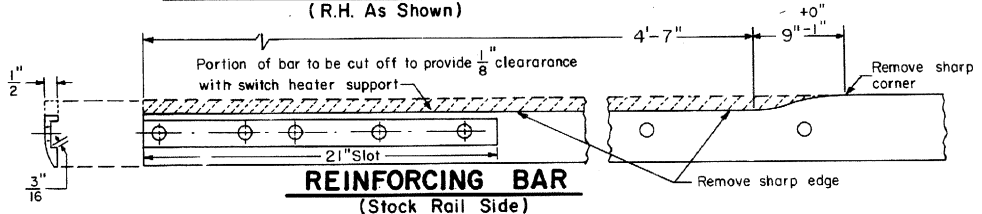
DETAILS OF BENT STOCK RAIL

(R.H. As Shown)



DETAILS OF STRAIGHT STOCK RAIL

(L.H. As Shown)



CONRAIL 73155-C

STANDARD

11'-0" STRAIGHT SPLIT SWITCH

INSULATED and UNDERCUT

WITH 119 or 132 LB. RAIL

JUNE, 1979

R.H. Smith Chief Engineer - Maintenance of Way

A.G. Gordon Chief Engineering Officer