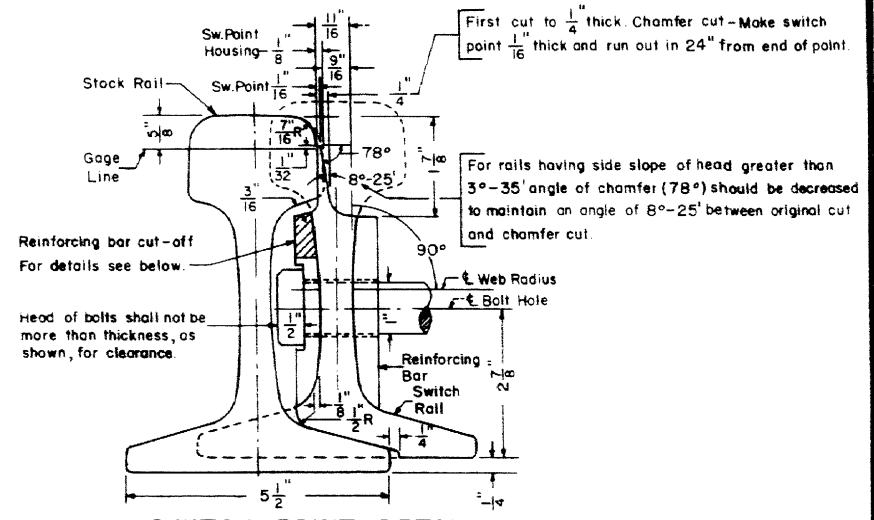
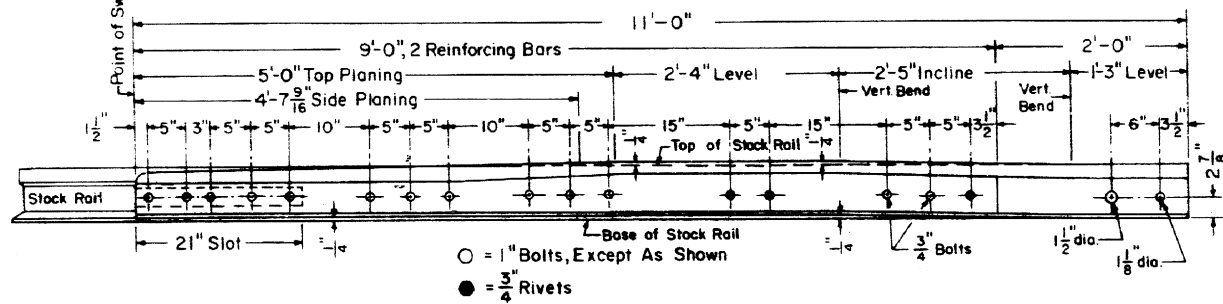


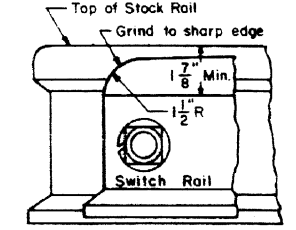
PLAN OF RIGHT HAND SWITCH LAYOUT



SWITCH POINT DETAIL
(Switch Point Housed 1/8")



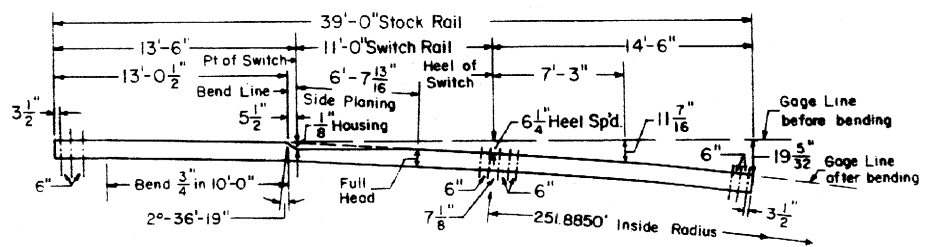
ELEVATION OF SWITCH RAIL



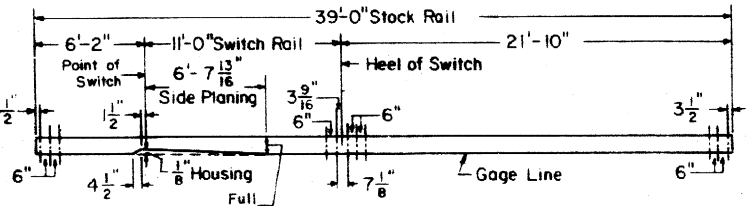
SWITCH POINT END

BILL OF MATERIAL

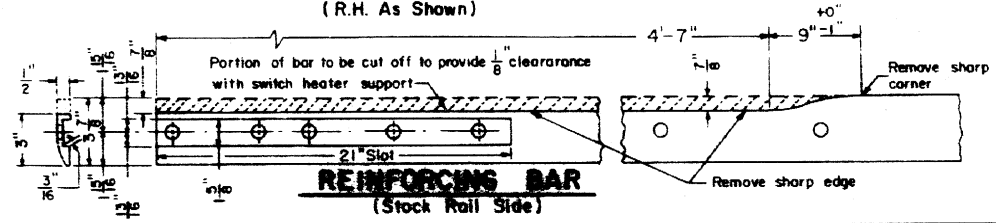
- 1 - Pair (11'-0" Straight Switch Points (1-R.H.B & 1-L.H.) complete with reinforcing bars, rod clips and stops attached.
- 1 - 39'-0" L.H. Straight Stock Rail.
- 1 - 39'-0" R.H. Bent Stock Rail.
- 2 - Horizontal Switch Rods, rod with basket. See C.R. Plan 73520-().
- 2 - Heel Block, complete. See C.R. Plan 73602-().
- 1 - No. 1-G Insulated Gage Plate
- 2 - No. 0 Adjustable Brace Plate
- 2 - No. 1-A " " " " See C.R. Plan 73501-()
- 2 - No. 1 " " " " "
- 4 - No. 1-P Shoulder Slide Plate
- 2 - No. 3 H Heel Plates (1-R.H. & 1-L.H.)
- 2 - No. 4 H " " (1-R.H. & 1-L.H.)
- 10 - "JR" Twin Tie Plates See C.R. Plan 72202-().
- 10 - "KR" " " " " "
- 10 - Adjustable Rail Braces, Type "A" complete with double nuts, washers and bolts. See C.R. Plan 73602-().
- 4 - Side Jaw Clips for horizontal switch rods. See C.R. Plan 73520-().



DETAILS OF BENT STOCK RAIL
(R.H. As Shown)



DETAILS OF STRAIGHT STOCK RAIL
(L.H. As Shown)



REINFORCING BAR
(Stock Rail Side)

NOTES

- 1 - This plan is for use with A.R.E.A. recommended standards for 119RE rail.
- 2 - Workmanship and materials, including beveling and hardening rail ends, shall be as per current A.R.E.A. Specifications.
- 3 - All bolts shall be dipped immediately before applying (so that all threads are thoroughly coated) in NO-OX-ID "GG" grease.
- 4 - Non-insulated switch furnished with gage plate and switch rods solid.
- 5 - When ordering a Left Hand Switch - these items shall be opposite hand.

CONRAIL **73156-A**

STANDARD

11'-0" STRAIGHT SPLIT SWITCH
INSULATED and HOUSED
FOR 119LB. R.E. RAIL
SEPTEMBER, 1976

R.A. Smith
Chief Engineer - Maintenance of Way
A.D. Yuba
Chief Engineering Officer