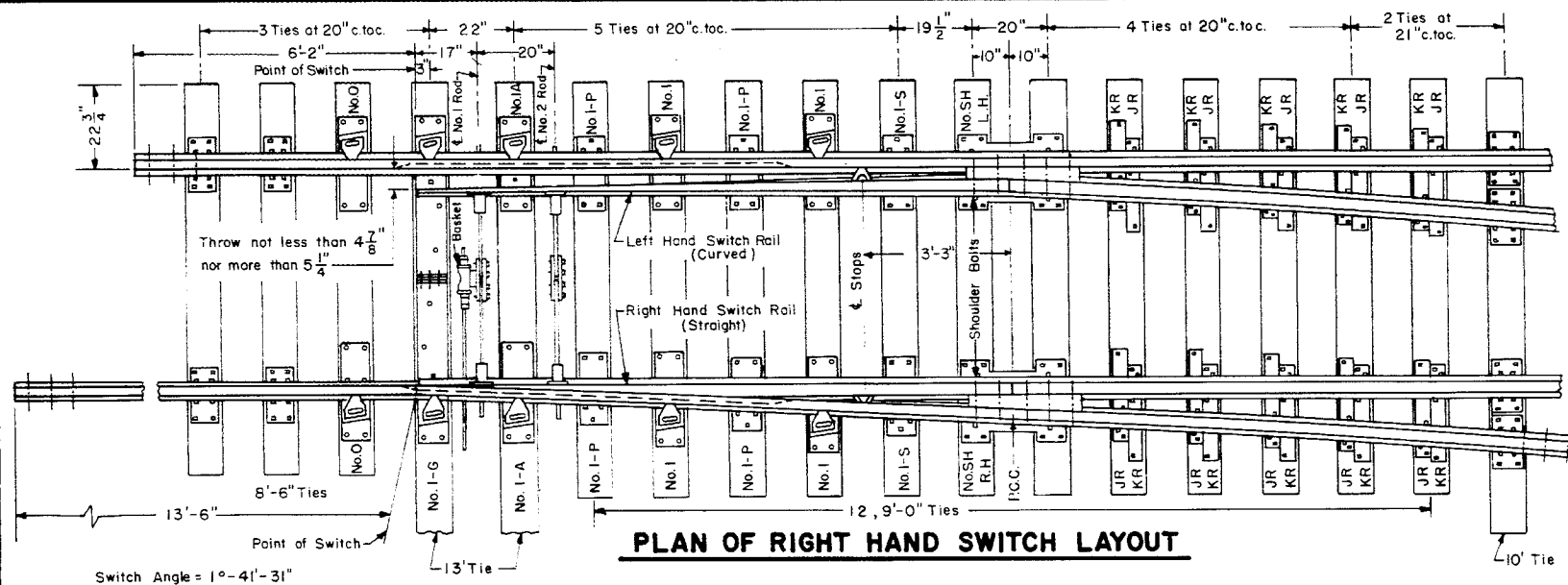
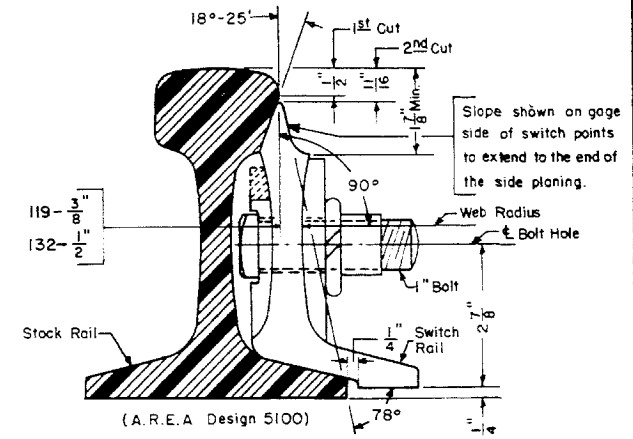


Revisions

A-Feb., 1981
B-May, 1981



PLAN OF RIGHT HAND SWITCH LAYOUT



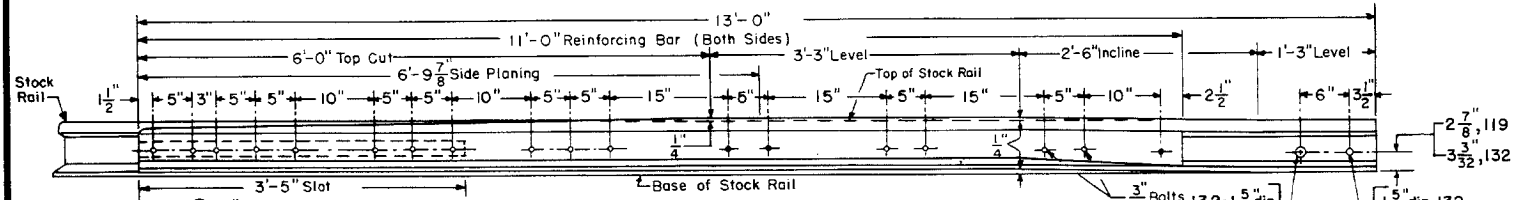
SWITCH POINT DETAIL

BILL OF MATERIAL

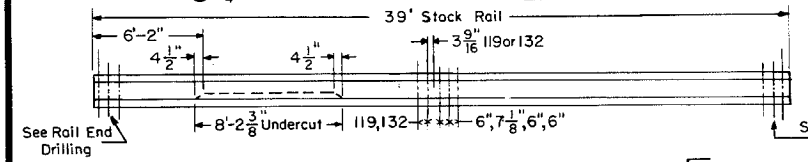
- * 1 - Pair 13'-0" Switch Points, 1-L.H. straight, 1-R.H. curved complete with reinforcing bars, rod clips and rail stops attached.
- * 2 - Undercut Stock Rails, 1-L.H. straight and 1-R.H. curved
- ▲ 2 - Vertical Switch Rods, Insulated, 1 with basket See C.R. Plan 73518-(). See Note No. 6
- 2 - Heel Block Assemblies, complete. See C.R. Plans 73515-(), 132; 73602-(), 119
- 1 - No.1-G Insulated Gage Plate
- 2 - No.0 Adjustable Brace Plate
- 2 - No.1-A " " Slide Plate
- 4 - No.1 " " " " See C.R. Plans 73519-() For 132
73501-() For 119
- 4 - No.1-P Shoulder Slide Plate
- 2 - No.SH Heel Plate, 1-R.H. and 1-L.H.
- 2 - No.1-S Shoulder Slide Plate (Special). Shown on this plan.
- 10 - "JR" and "KR" Twin Tie Plates. See C.R. Plan 72202-().
- 10 - Adjustable Rail Brace, Type A, complete. See C.R. Plans 73515-() or 73602-().
- ▲ 4 - Adjustable Rocker Clips for Vertical Switch Rods. See C.R. Plan 73518-(). See Note 6

NOTES

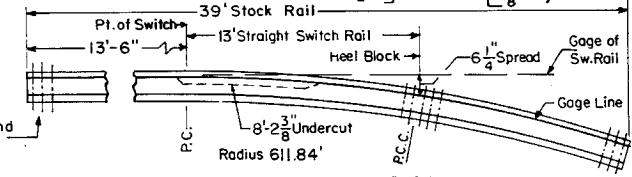
- 1 - The 13'-0" Switch to be used only with Lap Turnouts.
- 2 - This plan is for use with A.R.E.A. recommended standards for 119, 132 or 140 R.E. rail.
- 3 - Workmanship and materials, including beveling and hardening rail ends, shall be as per current A.R.E.A. Specifications.
- 4 - All bolts shall be dipped immediately before applying (all threads are thoroughly coated) in NO-OX-ID "GG" grease, manufactured by Dearborn Chemical Co.
- * 5 - When ordering a Left Hand Switch these items shall be opposite hand.
- ▲ 6 - With 119 lb. rail use horizontal rods and side jaw clips. See C.R. Plan 73521-().
- 7 - Stock rails and switch points to be fully heat treated. 119 and 132 lb rail.



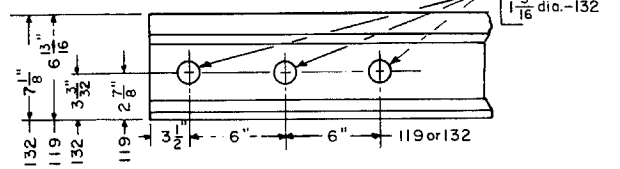
ELEVATION OF SWITCH RAIL



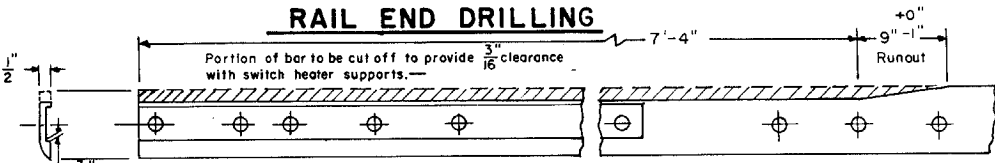
STRAIGHT STOCK RAIL



CURVED STOCK RAIL



RAIL END DRILLING



REINFORCING BAR

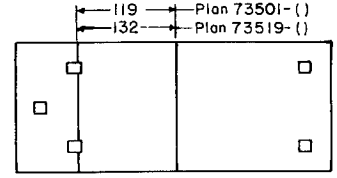


PLATE No. 1-S


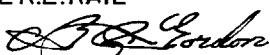
Note- All dimension for the 1-S Plate are the same as the 1-P Plate as per Plans 73501-() or 73519-() except for the dimensions as shown above.

CONRAIL 73157-C

STANDARD

13'-0" CURVED SPLIT SWITCH
INSULATED and UNDERCUT
119 R.E. or 132 R.E. RAIL

JUNE, 1979

Chief Engineer - Maintenance of Way Chief Engineering Officer