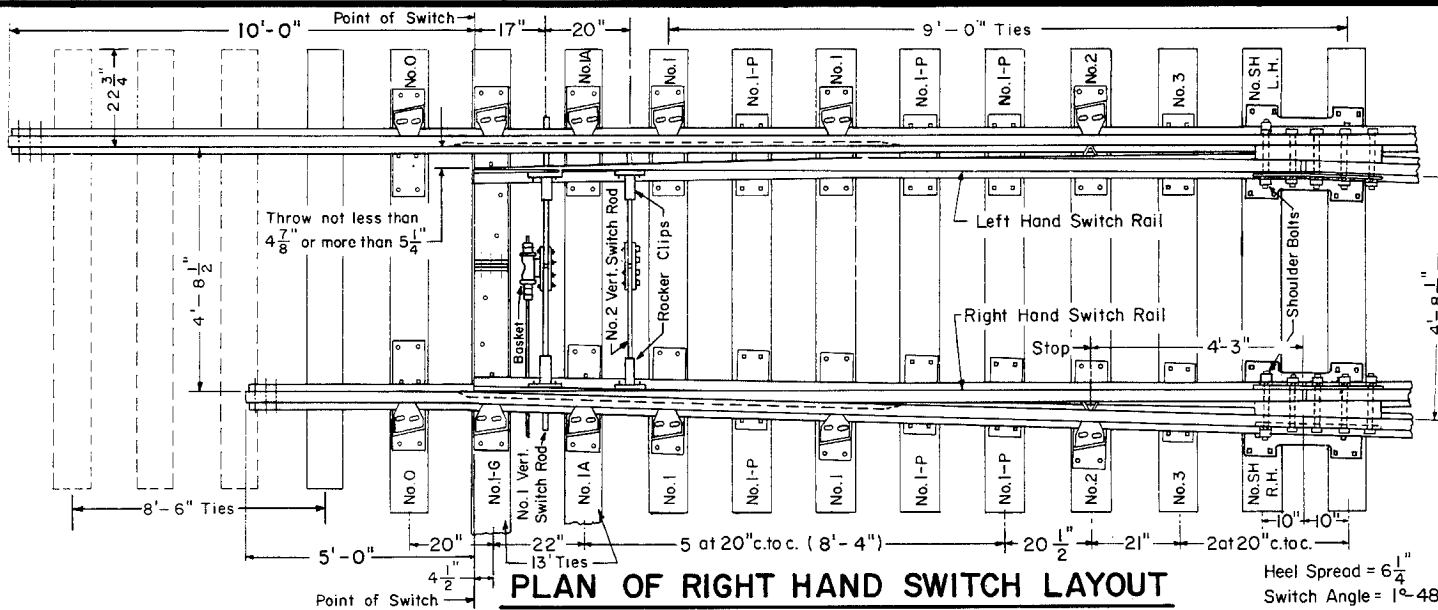
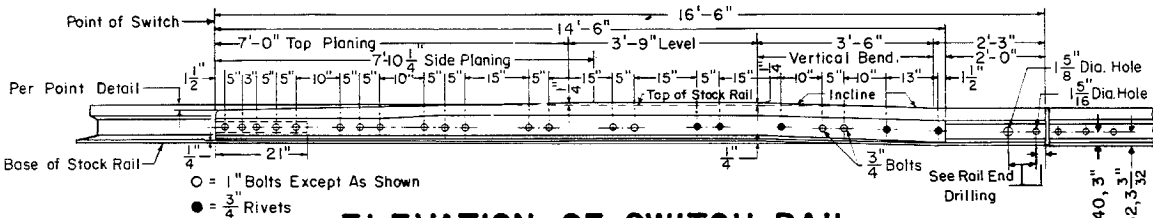


Revisions

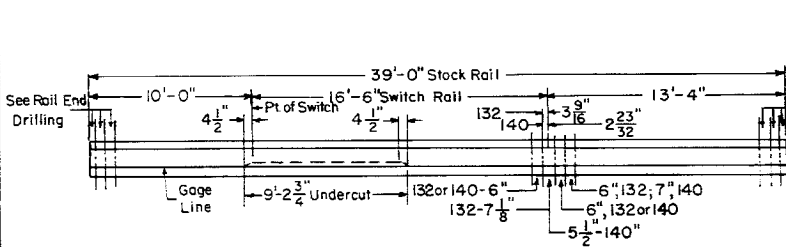
- B - Mar., 1979
- C - May, 1980
- D - July, 1981
- E - Nov., 1983



PLAN OF RIGHT HAND SWITCH LAYOUT

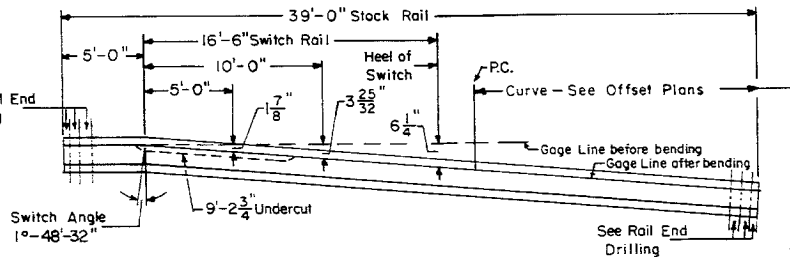


ELEVATION OF SWITCH RAIL



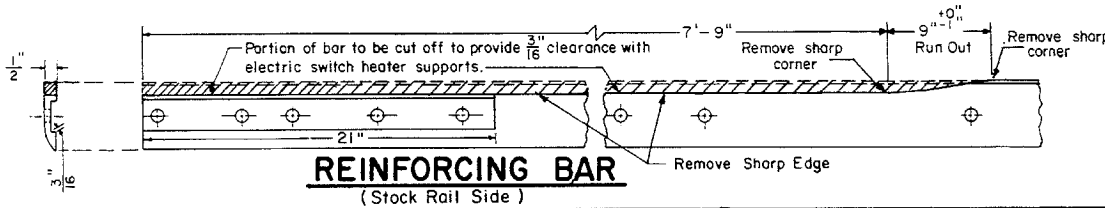
39' STRAIGHT STOCK RAIL

(L.H. As Shown)



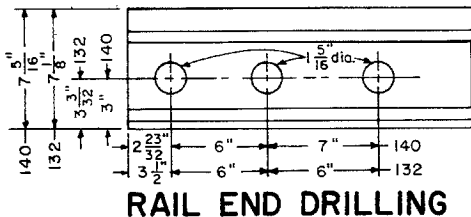
39' BENT STOCK RAIL

(R.H. As Shown)

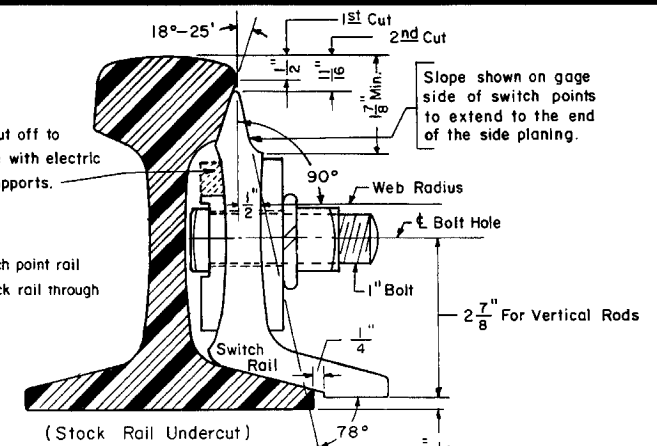


REINFORCING BAR

(Stock Rail Side)



RAIL END DRILLING



SWITCH POINT DETAIL

(A.R.E.A. DESIGN 5100)

BILL OF MATERIAL

- 1 - Pair 16'-6" Straight Switch Points, complete with reinforcing bars, rocker clips and rail stops attached.
- * 1 - 39'-0" Straight Stock Rail, L.H. Undercut.
- * 1 - 39'-0" Bent Stock Rail, R.H. Undercut.
- 2 - Vertical Switch Rods, 1 with basket. See C.R. Plan 73518-().
- 2 - Heel Block Assemblies, complete. See C.R. Plan 73515-().
- 1 - No. 1-G Insulated Gage Plate
- 2 - No. 0 Adjustable Brace Slide Plate
- 2 - No. 1-A " " " " " See C.R. Plan 73519-().
- 4 - No. 1 " " " " "
- 2 - No. 2 " " " " "
- 6 - No. 1-P Shoulder Slide Plate
- 2 - No. 3 " " " " "
- 2 - No. SH Heel Plate, 1-R.H. and 1-L.H.
- 12 - Adjustable Rail Braces, Type A, complete with double nuts, double washers and bolts. See C.R. Plan 73515-().
- 2 - Switch Stops. See C.R. Plan 73515-().
- 4 - Adjustable Rocker Clips, for vertical switch rods. See C.R. Plan 73518-().

NOTES

- 1 - This plan is for use with A.R.E.A. recommended standards for 132 lb. or 140 lb. R.E.
- 2 - Stock rails and switch points to be fully heat treated, all other rails to be end hardened.
- 3 - All bolts shall be dipped immediately before applying (so that all threads are thoroughly coated) in NO-OX-ID "GG" grease manufactured by Dearborn Chemical Co.
- * 4 - When ordering a Left Hand Switch these items are opposite hand.

CONRAIL 73167-E

STANDARD

**16'-6" STRAIGHT SPLIT SWITCH
FOR NO.8 or NO.10 TURNOUT-UNDERCUT**

132 R.E. or 140 R.E.

FEBRUARY, 1978

R.H. Smith
Chief Engineer - Maintenance of Way

Chief Engineering Officer