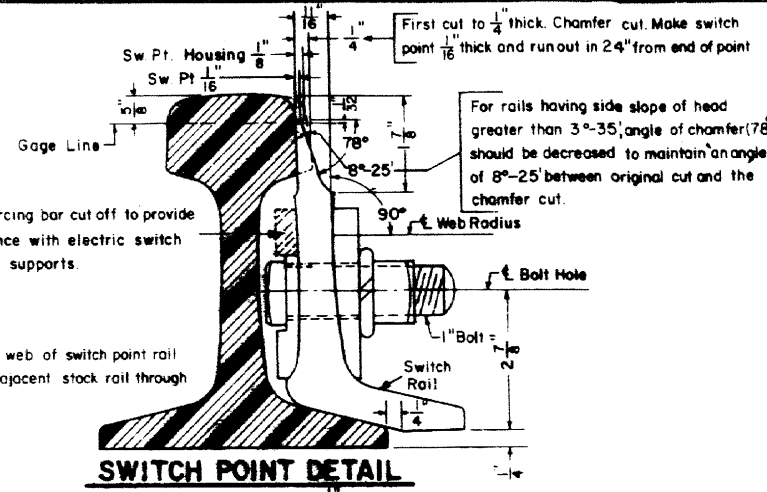
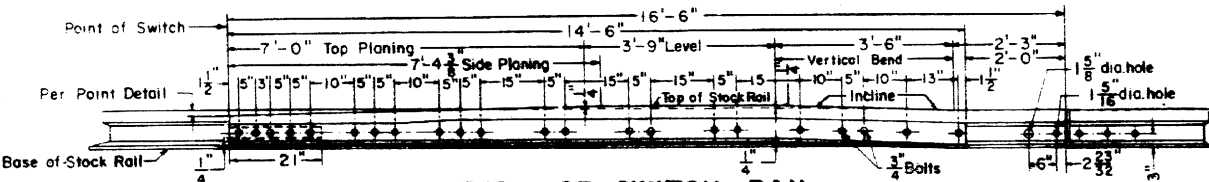


PLAN OF RIGHT HAND SWITCH LAYOUT



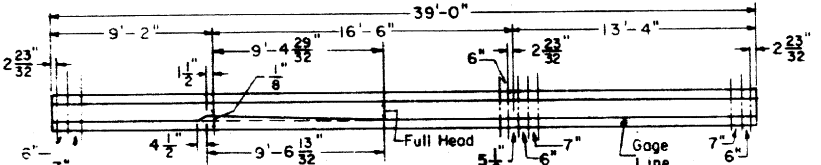
SWITCH POINT DETAIL
(Switch Point Housed)



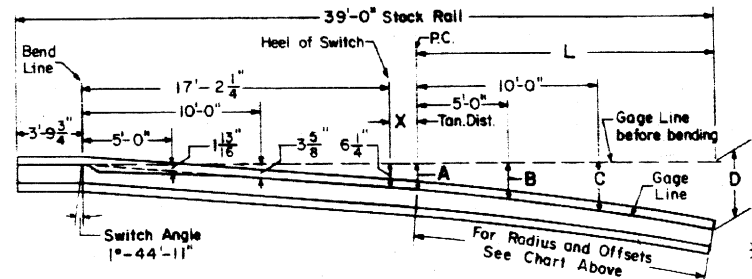
ELEVATION OF SWITCH RAIL

OFFSETS FOR CURVED PORTION OF STOCK RAIL

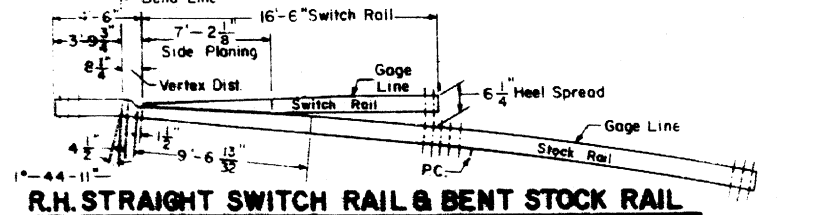
TURNOUT NO.	RADIUS	X	L	A	B	C	D
8	462.73'	17 7/8"	16'-6 1/8"	6 23/32"	8 13/16"	11 23/32"	16 11/32"
10	725.15'	18"	16'-6"	6 23/32"	8 13/16"	11 1/4"	15 1/16"



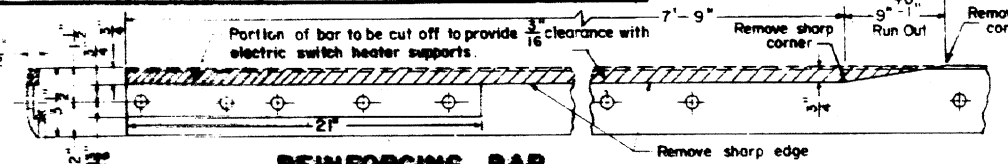
STRAIGHT STOCK RAIL - L.H.



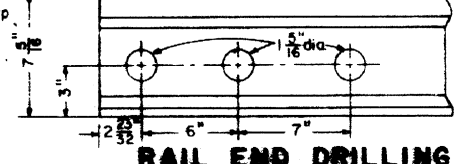
OFFSETS FOR BENDING 39'-0" STOCK RAIL
(R.H. As Shown)



R.H. STRAIGHT SWITCH RAIL & BENT STOCK RAIL



REINFORCING BAR



RAIL END DRILLING

BILL OF MATERIAL

- 1-Pair 16'-6" Straight Switch Points, complete with reinforcing bars, rod clips and rail stops attached.
- * 1-39'-0" Straight Stock Rail, L.H. Housed 1/8"
- * 1-39'-0" Bent Stock Rail, R.H. Housed 1/8"
- 2-Horizontal Switch Rods, 1 with Basket. See C.R. Plan 73520-(-).
- 2-Heel Block Assemblies, complete. See C.R. Plan 73515-(-).
- 1-No. 1-G Insulated Gage Plate
- 2-No. 0 Adjustable Brace Slide Plate
- 2-No. 1-A " " " " See C.R. Plan 73519-(-).
- 2-No. 2 " " " " " "
- 6-No. 1-P Shoulder Slide Plate
- 2-No. 3 " " " " " "
- 2-No. SH Heel Plate, 1-R.H. and 1-L.H.
- 12-Adjustable Rail Braces, Type A, complete with double nuts, double washers and bolts. See C.R. Plan 73515-(-).
- 2-Switch Stops. See C.R. Plan 73515-(-).
- 4-Side Jaw Clips for horizontal switch rods. See C.R. Plan 73520-(-).

NOTES

- 1- This plan is for use with A.R.E.A. recommended standards for 140lb.R.E. rail.
- 2- Workmanship and materials, including beveling and hardening rail ends, shall be as per current A.R.E.A. Specifications.
- 3- All bolts shall be dipped immediately before applying (so that all threads are thoroughly coated) in NO-OX-ID "GG" grease manufactured by Dearborn Chemical Co.
- 4- Non-Insulated Switch to be furnished with switch rods and gage plate solid.
- * 5- When ordering a Left Hand Switch these items shall be opposite hand.

CONRAIL 73168-A

STANDARD
16'-6" STRAIGHT SPLIT SWITCH
INSULATED and HOUSED
FOR 140LB.R.E. RAIL
SEPTEMBER, 1976

R.H. Smith
Chief Engineer - Maintenance of Way

A.B. Sander
Chief Engineering Officer