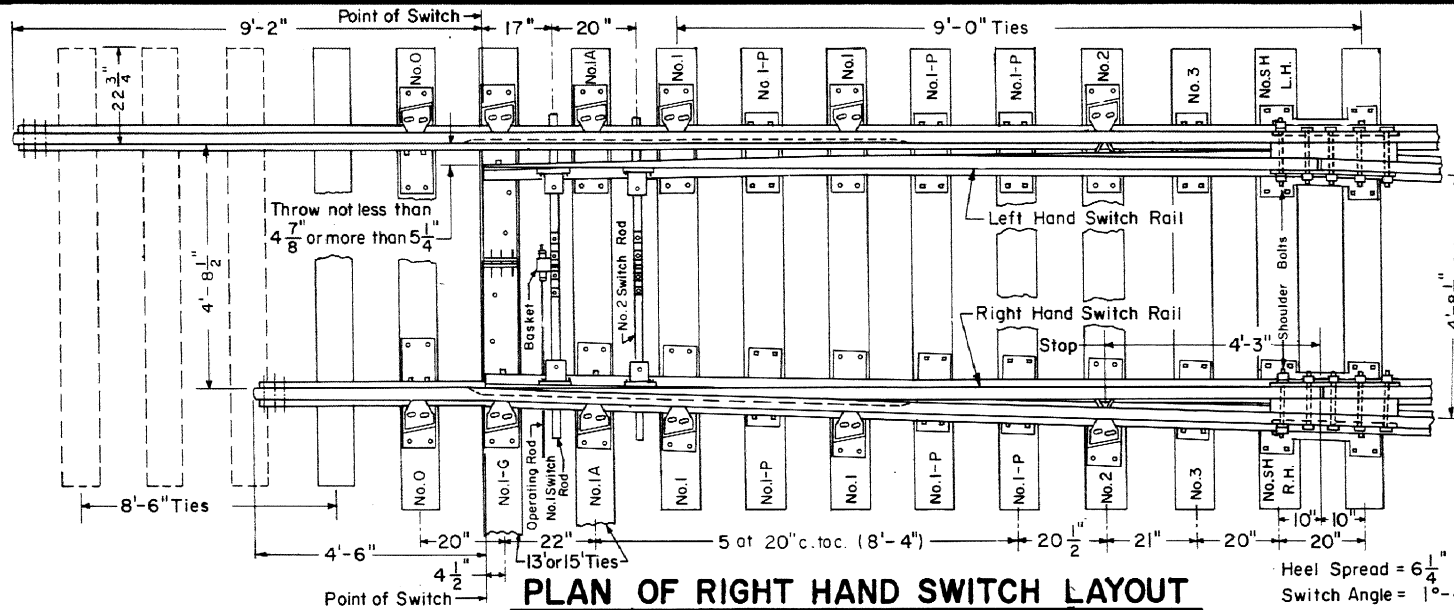
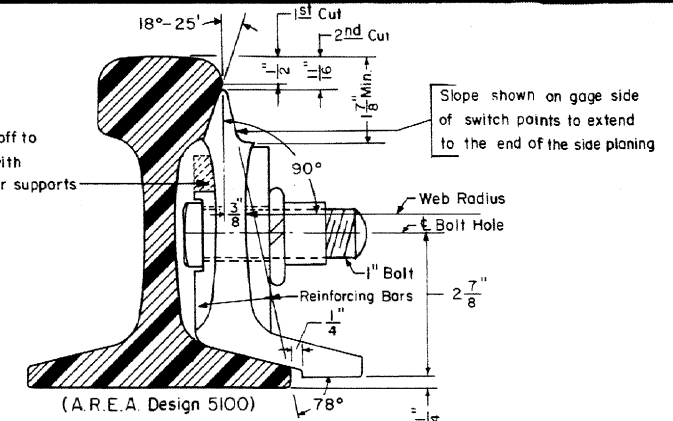


Revisions
 "A" Feb. 1979
 "B" July, 1981



PLAN OF RIGHT HAND SWITCH LAYOUT

Heel Spread = 6 1/4"
 Switch Angle = 1°-48'-32"



SWITCH POINT DETAIL

BILL OF MATERIAL

- 1 - Pair 16'-6" Straight Switch Points, complete with reinforcing bars, side jaw clips and rail stops attached.
- * 1 - 39'-0" Straight Stock Rail, L.H. Undercut
- * 1 - 39'-0" Bent Stock Rail, R.H. Undercut
- 2 - Horizontal Switch Rods, with basket. See C.R. Plan 73521-().
- 2 - Heel Block Assemblies, complete. See C.R. Plan 73602-().
- 1 - No. 1-G Insulated Gage Plate
- 2 - No. 0 Adjustable Brace Slide Plate
- 2 - No. 1-A " " " " " "
- 4 - No. 1 " " " " " "
- 2 - No. 2 " " " " " "
- 6 - No. 1-P Shoulder Slide Plate
- 2 - No. 3 " " " " " "
- 2 - No. SH Heel Plates, 1-R.H. & 1-L.H.
- 4 - Side Jaw Clips for horizontal switch rods. See C.R. Plan 73521-().
- 12 - Adjustable Rail Braces, Type A, complete. See C.R. Plan 73602-().
- 2 - Switch Stops

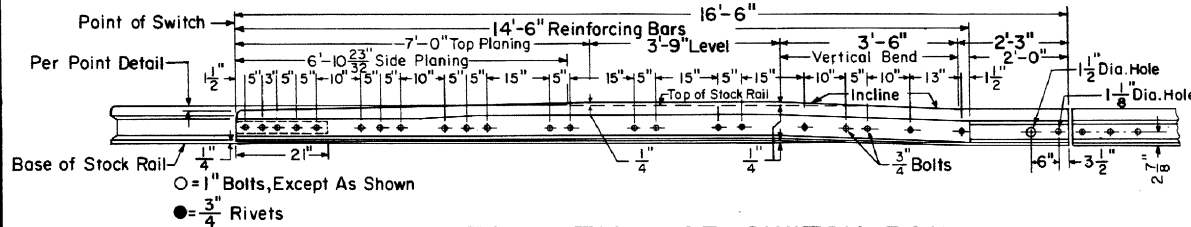
TURNOUT INFORMATION

OFFSETS -

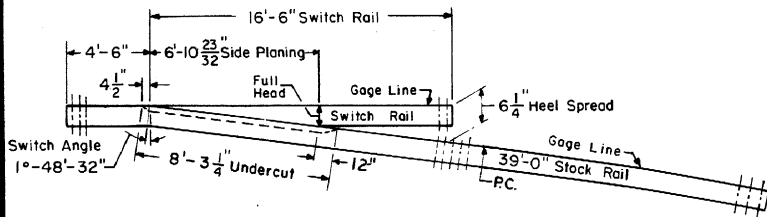
- No. 8 T.O. - C.R. Plan 73009-()
- No. 10 T.O. - C.R. Plan 73010-()

RAIL and TIE LAYOUT

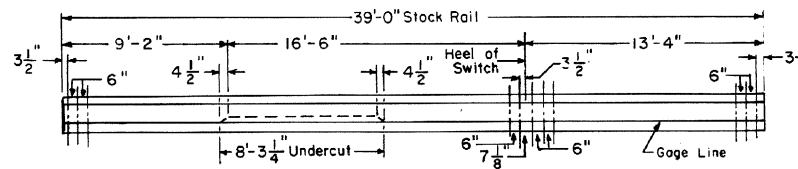
- No. 8 T.O. - C.R. Plan 73196-()
- No. 10 T.O. - C.R. Plan 73197-()



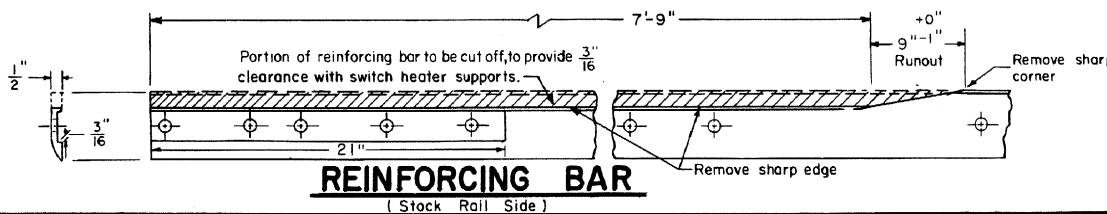
ELEVATION OF SWITCH RAIL



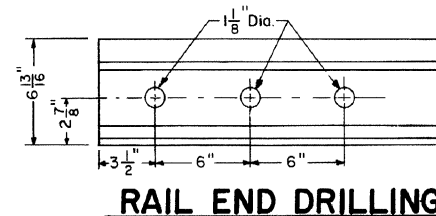
BENT STOCK RAIL
 (R.H. As Shown)



STRAIGHT STOCK RAIL
 (L.H. As Shown)



REINFORCING BAR
 (Stock Rail Side)



RAIL END DRILLING

NOTES

- 1 - This plan is for use with A.R.E.A. recommended standards for 119 lb. R.E. rail.
- 2 - Stock rails and switch points to be fully heat treated, all other rails to be end hardened.
- 3 - All bolts shall be dipped immediately before applying (so that all threads are thoroughly coated) in NO-OX-ID "GG" grease, manufactured by Dearborn Chemical Co.
- * 4 - When ordering a Left Hand Switch - these items shall be opposite hand.

CONRAIL 73170-C

STANDARD

16'-6" STRAIGHT SPLIT SWITCH

INSULATED and UNDERCUT

WITH 119 LB. R.E. RAIL

SEPTEMBER, 1976

R.H. Smith Chief Engineer - Maintenance of Way
A.P. Gordon Chief Engineering Officer