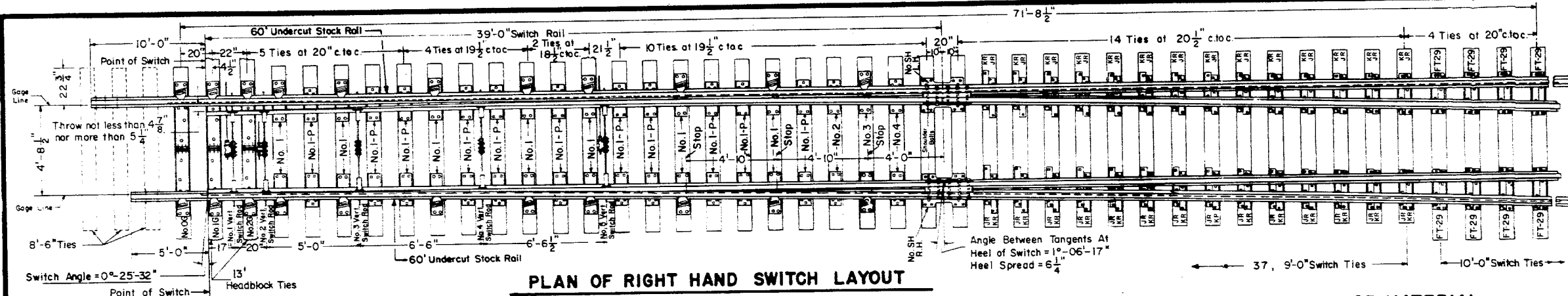
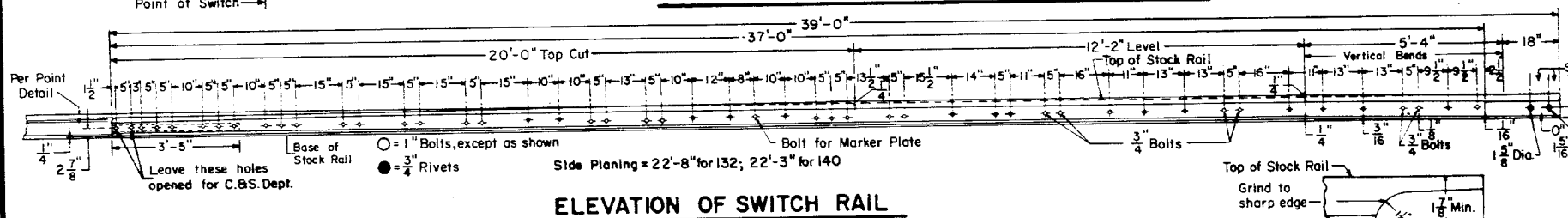


**Revisions**

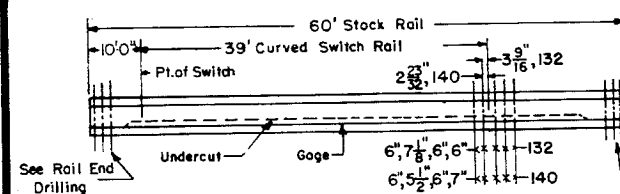
- B - Aug, 1979
- C - May, 1980
- D - Nov, 1983
- E - Feb, 1984



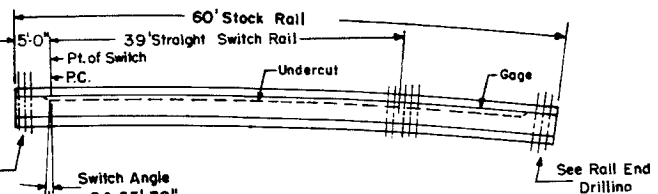
**PLAN OF RIGHT HAND SWITCH LAYOUT**



**ELEVATION OF SWITCH RAIL**



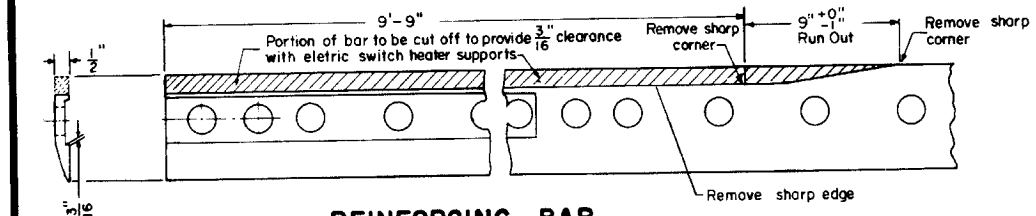
**STRAIGHT STOCK RAIL**



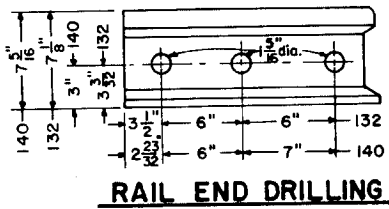
**CURVED STOCK RAIL**

**TURNOUT INFORMATION**

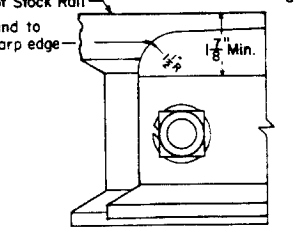
- OFFSETS  
C.R. Plan 73012-()
- TIE AND RAIL LAYOUT  
C.R. Plan 73195-()



**REINFORCING BAR**



**RAIL END DRILLING**



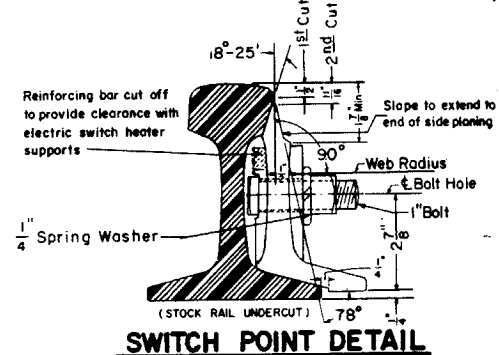
**END OF SWITCH RAIL**

**BILL OF MATERIAL**

- \*1 - Pair 39'-0" Switch Points, 1-R.H. straight and 1-L.H. curved, complete with reinforcing bars, clips and stops attached.
- 2 - 60'-0" Undercut Stock Rails. C.R. Plan 73062-().
- 5 - Insulated Vertical Switch Rods, 2 with baskets. C.R. Plan 73514-().
- 2 - Heel Block assemblies, complete. C.R. Plan 73515-().
- 3 - Insulated Gage Plates Nos. O-G, I-G 8-2-G.
- 14 - No. 1 Adjustable Brace Slide Plates
  - 1 - No. 3 " " " " C.R. Plan 73513-()
  - 22 - No. 1-P Shoulder Slide Plates " " " "
  - 2 - No. 2 " " " " " " " "
  - 2 - No. 4 " " " " " " " "
  - 2 - No. SH Heel Plates, 1-R.H. and 1-L.H.
- 10 - Adjustable Rocker Clips for vertical switch rods. C.R. Plan 73514-()
- 28 - "JR" Twin Tie Plates C.R. Plan 72202-().
- 28 - "KR" Twin Tie Plates C.R. Plan 72202-().
- 22 - Adjustable Rail Braces, Type A, complete. C.R. Plan 73515-().
- 16 - FT 29 Frog Tie Plates. C.R. Plan 72105-().

**NOTES**

- 1 - This plan is for use with A.R.E.A. recommended standards for 132 or 140 R.E. rail.
- 2 - Stock rails and switch points to be fully heat treated, all other rails end hardened. 140 R.E. is not heat treated.
- 3 - All bolts shall be dipped immediately before applying (so that threads are thoroughly coated) in NO-OX-ID "GG" grease, manufactured by Dearborn Chemical Company.
- \*4 - When ordering a Left Hand Switch, these items shall be opposite hand.



**SWITCH POINT DETAIL**

**CONRAIL 73179-E**

STANDARD

**39'-0" CURVED SPLIT SWITCH**  
FOR NO. 20 TURNOUT- UNDERCUT  
132 R.E. or 140 R.E. RAIL

MARCH, 1979

*RHS*  
Chief Engineer - Maintenance of Way
*RHS*  
Chief Engineering Officer