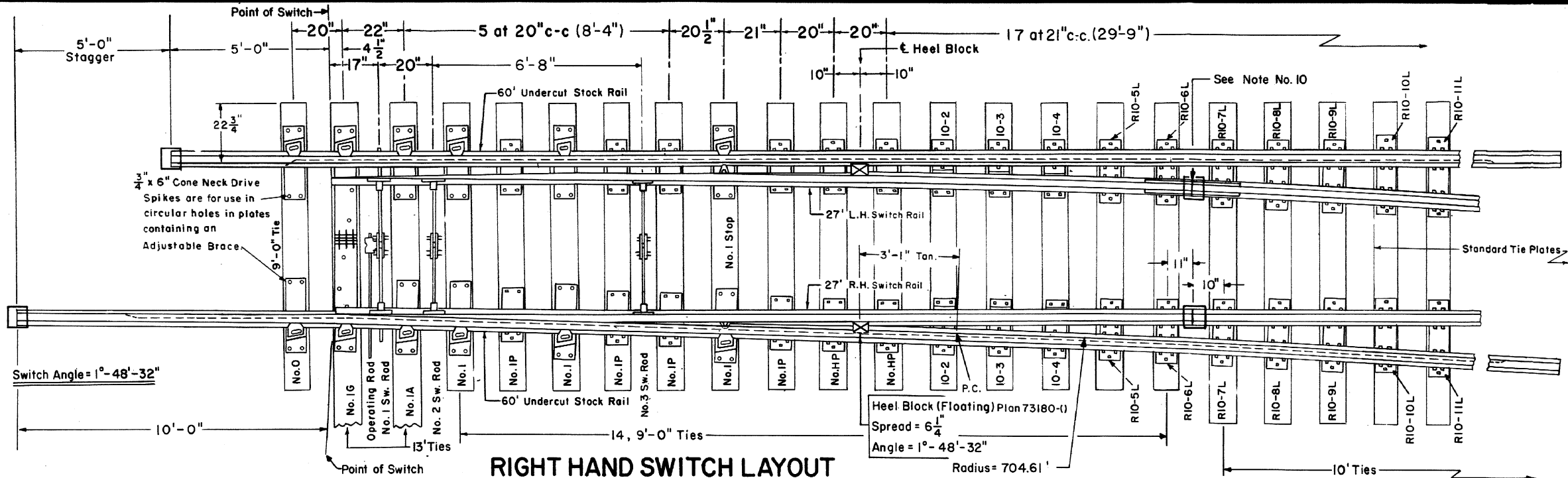
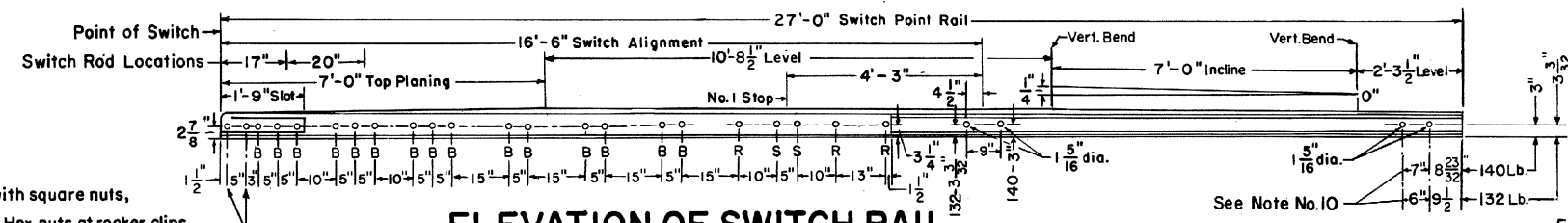


- Revisions
 "B"-Mar., 1979
 "C"-Jan., 1980
 "D"-May, 1980
 "E"-Dec., 1981
 "F"-Jun., 1983
 G - Sept., 1985
 H - Apr., 1986
 I - June, 1991



RIGHT HAND SWITCH LAYOUT



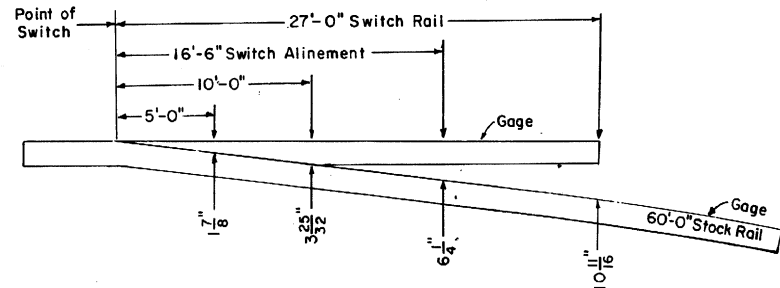
ELEVATION OF SWITCH RAIL

NOTES

- "B" = 1" dia. H.T. machine bolts with square nuts, spring washers, 1/4" cotter pins. Hex nuts at rocker clips.
- "R" = 3/4" dia. rivets.
- "S" = 3/4" dia. machine bolts for stops with square nuts, spring washers and 3/16" cotter pins.

- 1 - This plan is for use with A.R.E.A. recommended standards for 132 R.E.
- 2 - Workmanship and materials shall be as per current A.R.E.A. Specifications.
- 3 - Gage Plate 1-G as shown on Conrail Plan 73522-().
- 4 - Switch Plates Nos. O, I, IA, IP shown on Conrail Plan 73522-().
- 5 - Turnout Plates No. 2 thru No. 11 as shown on Conrail Plan 72220-().
- 6 - Stock Rails to be undercut as per Conrail Plan 73062-().
- 7 - Switch Rails to be undercut per A.R.E.A. Design 5100.
- 8 - All rails to be Fully Heat Treated.
- 9 - Vertical insulated switch rods and adjustable rocker clips as per Conrail Plan 73518-().
- 10 - All rails, including switch rails, to be drilled per Conrail Plan 71015-() for 132 R.E. rail, except that first hole is not to be drilled by the manufacturer. Conrail forces to field drill first hole when necessary.
- 11 - See Conrail Plan 73184-(), sheet 2, for Bill of Material

- 12 - All bolts shall be dipped immediately before applying (so that all threads are thoroughly coated) in NO-OX-ID "GG" grease manufactured by Dearborn Chemical Co.



SWITCH OFFSETS

* 11" for No. 8 Turnout

73181-1

STANDARD

16'-6" STRAIGHT SPLIT SWITCH

27' SWITCH RAILS WITH FLOATING HEEL BLOCKS

FOR NO. 10 WELDED TURNOUT - 132 R.E. RAIL

JANUARY 1978

Chief Engineer - Maintenance of Way

Chief Engineering Officer