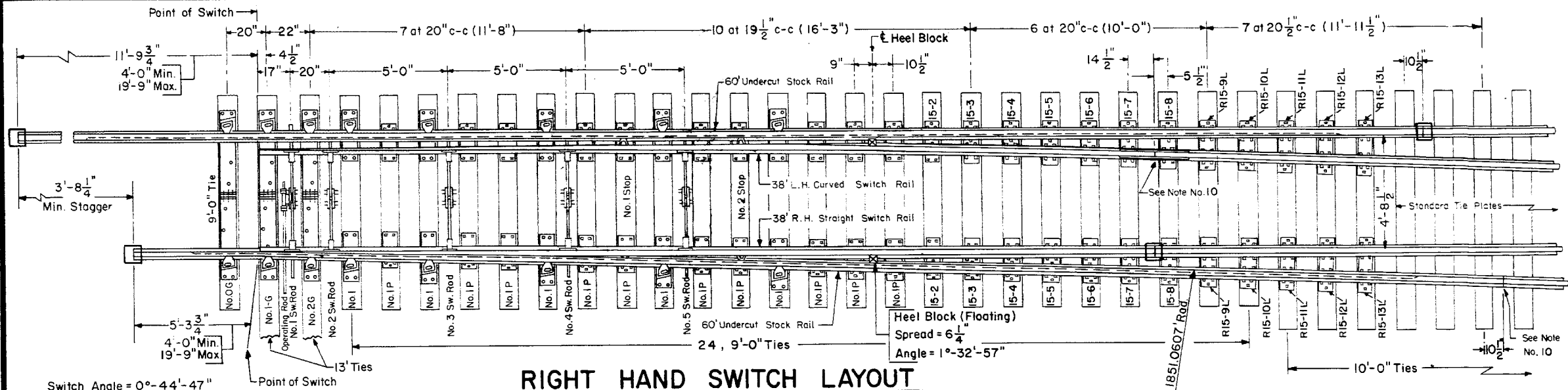


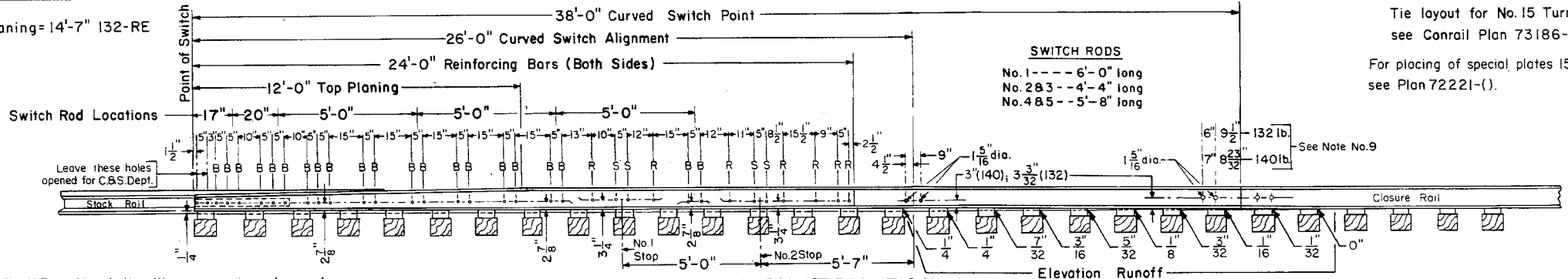
Revisions  
 A - May, 1980  
 B - Dec., 1981



Switch Angle = 0°-44'-47"

Side Planing = 14'-7" 132-RE

### RIGHT HAND SWITCH LAYOUT



**SWITCH RODS**  
 No. 1 - 6'-0" long  
 No. 2 & 3 - 4'-4" long  
 No. 4 & 5 - 5'-8" long

Tie layout for No. 15 Turnout  
 see Conrail Plan 73186-().  
 For placing of special plates 15-2 thru 15-13  
 see Plan 72221-().

"B" = 1" dia. H.T. machine bolts with square nuts, spring washers and 1/4" cotter pins. Hex nuts at rocker clips.  
 "R" = 3/4" dia. rivets.  
 "S" = 3/4" dia. machine bolts for stops with square nuts, spring washers and 3/16" cotter pins.

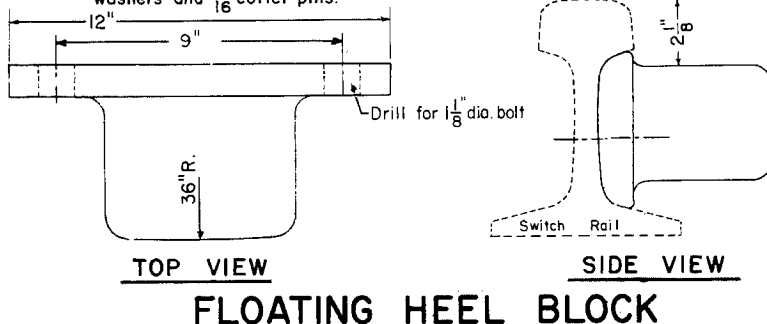
### ELEVATION OF SWITCH RAIL

### NOTES


- This plan is for use with A.R.E.A. recommended standards for 132 R.E.
- Workmanship and materials shall be as per current A.R.E.A. Specifications.
- Gage Plate OG, 1-G and 2G are as shown on Conrail Plan 73517-().
- Switch Plates No. 1 and IP are as shown on Conrail Plan 73517-().
- Turnout Plates No. 2 thru No. 13 are as shown on Conrail Plan 72221-().
- Stock Rails to be undercut as per Conrail Plan 73062-().
- Switch Rail to be undercut per A.R.E.A. Design 5100.
- Stock Rails and Switch Points to be fully heat treated, all other rails end hardened.
- Vertical insulated switch rods and adjustable rocker clips as per Conrail Plan 73516-().
- All rails, including switch rails, to be drilled per Conrail Plan 71015-() for 132 R.E. rail, except that first hole is not to be drilled by the manufacturer. Conrail forces to field drill first hole when necessary.
- See Conrail Plan 73184-(), sheet 2, for Bill of Material

Indicates Field Weld

3/4" x 6" Cone Neck Drive Spikes are for use in plates containing an Adjustable Brace.



### FLOATING HEEL BLOCK



**73182-C**

STANDARD

**26' CURVED SPLIT SWITCH**

**38' SWITCH RAILS WITH FLOATING HEEL BLOCKS**

**FOR NO. 15 WELDED TURNOUT-132 R.E. RAIL**

JANUARY, 1978

*R.H. Smith* Chief Engineer-Maintenance of Way  
*A.P. Gordon* Chief Engineering Officer