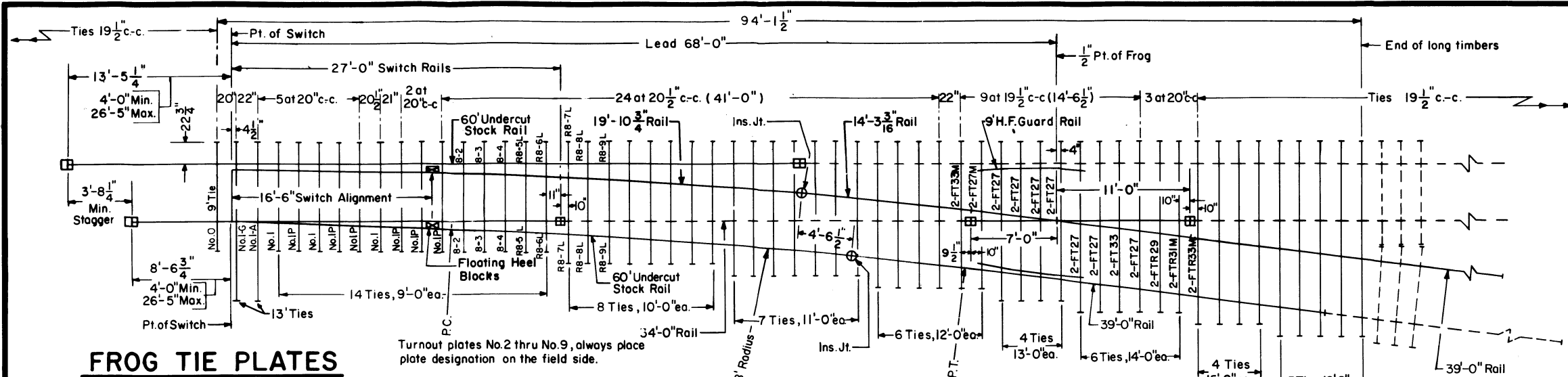


Revisions
 "A" Aug. 1978
 "B" Dec. 1979



FROG TIE PLATES

- 14 - FT 27
 - 2 - FT 27 Modified
 - 2 - FT 33
 - 2 - FT 33 Modified
 - 2 - FTR 29
 - 2 - FTR 31 Modified
 - 2 - FTR 33 Modified
- Plan 72105-()

NOTES

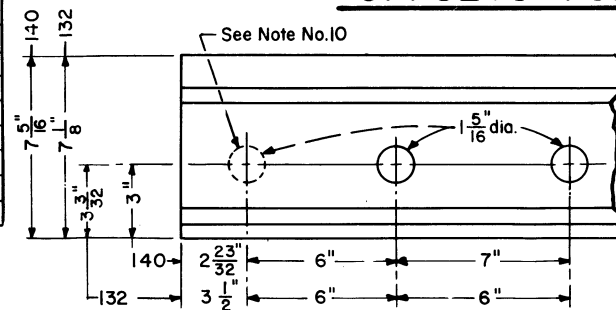
- 1 - All rails to be furnished not heat treated, end hardened or beveled.
- 2 - Switch rails to be samson.
- 3 - 60' stock rails to be undercut as per Plan 73062-().
- 4 - For switch details see Plan 73180-().
- 5 - Gage plate No. 1-G as per Plan 73519-().
- 6 - Switch plates Nos. O, I, I-A and I-P as per Plan 73519-().
- 7 - Turnout plates No. 2 thru No. 9, as per Plan 72220-().
- 8 - Vertical insulated switch rods and adjustable rocker clips, generally as per Plan 73518-().
- 9 - Floating heel block, as per Plan 73180-().
- 10 - All rails, including switch rails, to be drilled per Conrail Plan 71010-() for 140R.E. rail or Plan 71015-() for 132R.E. rail, except that first hole is not to be drilled by the manufacturer. Conrail forces to field drill first hole when necessary.
- 11 - The rails on the turnout side are bolted joints.

LEGEND

- Indicates rails furnished by the manufacturer.
- - - - Indicates rails furnished by Conrail.
- ⊕ Indicates standard bolted joint with $\frac{1}{8}$ " opening.
- ⊕ Indicates insulated joints with $\frac{1}{4}$ " opening.
- ⊞ Indicates field welded joints.

LONG TIMBERS REQUIRED

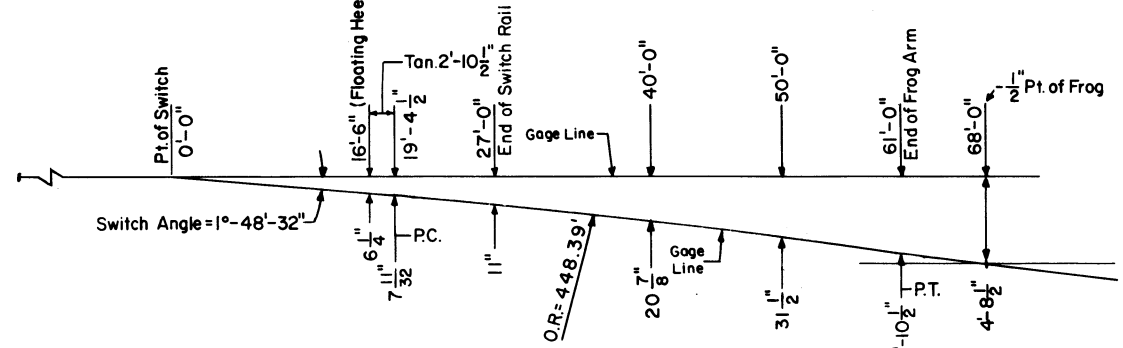
QUANTITY	LENGTH
15	9'-0"
8	10'-0"
7	11'-0"
6	12'-0"
6	13'-0"
6	14'-0"
4	15'-0"
5	16'-0"
57	Total



RAIL END DRILLING

Insulated Joint Stagger
 Min. = 32"
 Max. = 4'-8"

No. 8 - 132 RBM Frog Plan 74160-()
 No. 8 - 140 RBM Frog Plan 74140-()



OFFSETS FOR NO. 8 R.H. TURNOUT

CONRAIL 73184-C

STANDARD

**NO. 8 WELDED TURNOUT
 TIE AND RAIL LAYOUT-132 & 140R.E.**

JANUARY, 1978

R.H. Smith
 Chief Engineer - Maintenance of Way

A.D. Gordon
 Chief Engineering Officer