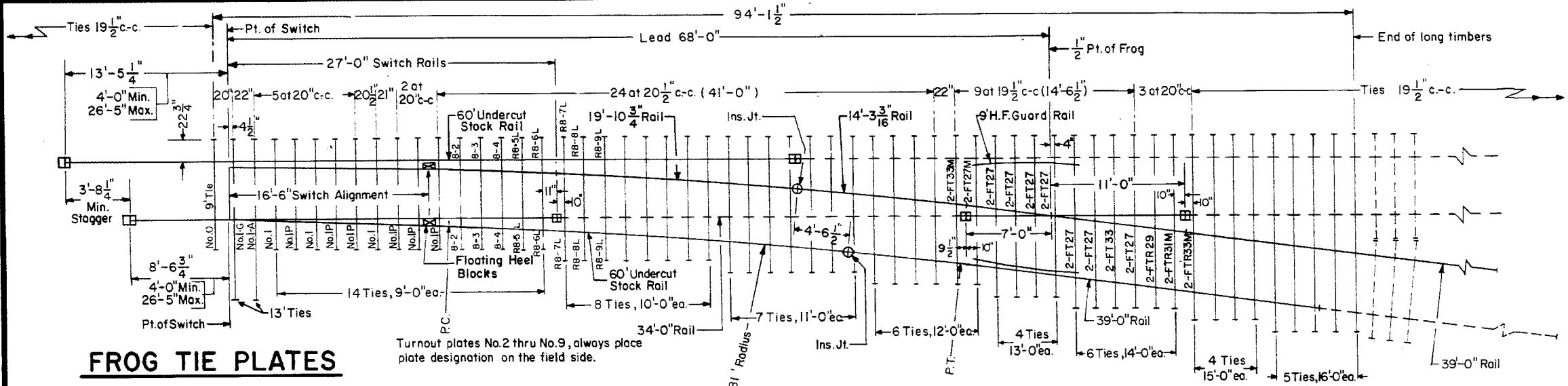


Revisions
 "A" Aug. 1978
 "B" Jan., 1980
 "C" May, 1980
 "D" Dec., 1981



FROG TIE PLATES

- 14 - FT 27
- 2 - FT 27 Modified
- 2 - FT 33
- 2 - FT 33 Modified
- 2 - FTR 29
- 2 - FTR 31 Modified
- 2 - FTR 33 Modified

Plan 72105-()

LEGEND

- Indicates rails furnished by the manufacturer.
- - - - Indicates rails furnished by Conrail.
- + Indicates standard bolted joint with 1/8" opening.
- ⊕ Indicates insulated joints with 1/4" opening.
- ⊞ Indicates field welded joints.

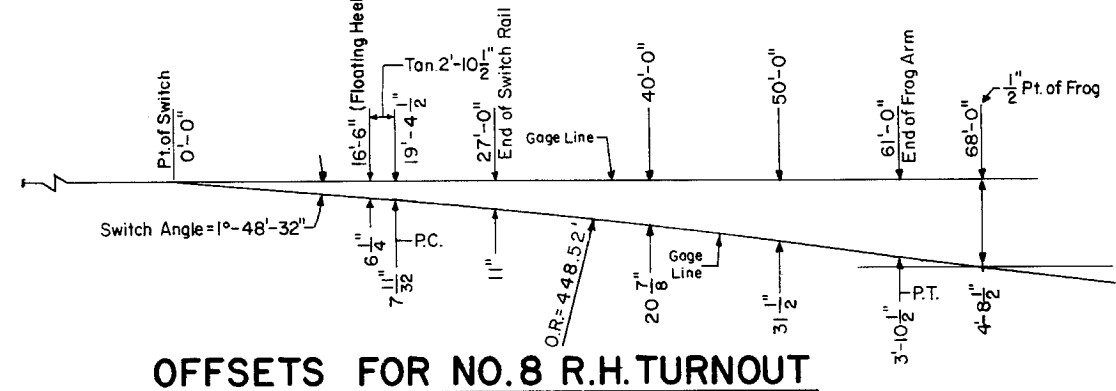
NOTES

- 1 - Stock rails and switch points to be fully heat treated, all other rails to be end hardened.
- 2 - Switch rails to be samson.
- 3 - 60' stock rails to be undercut as per Plan 73062-().
- 4 - For switch details see Plan 73180-().
- 5 - Gage plate No. 1-G as per Plan 73519-().
- 6 - Switch plates Nos. 0, 1, 1-A and 1-P as per Plan 73519-().
- 7 - Turnout plates No. 2 thru No. 9, as per Plan 72220-().
- 8 - Vertical insulated switch rods and adjustable rocker clips, generally as per Plan 73518-().
- 9 - Floating heel block, as per Plan 73180-().
- 10 - All rails, including switch rails, to be drilled per Conrail Plan 71015-() for 132 R.E. rail, except that first hole is not to be drilled by the manufacturer. Conrail forces to field drill first hole when necessary.
- 11 - The rails on the turnout side are bolted joints.
- 12 - See Conrail Plan 73184-(), sheet 2, for Bill of Material.

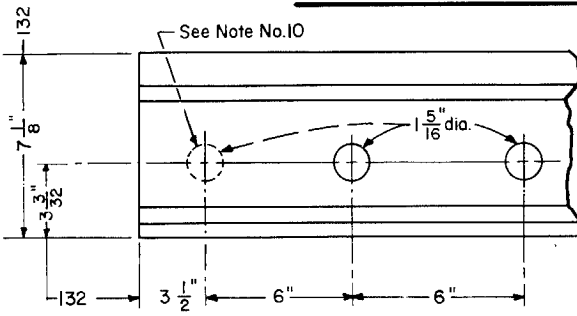
LONG TIMBERS REQUIRED

QUANTITY	LENGTH
15	9'-0"
8	10'-0"
7	11'-0"
6	12'-0"
6	13'-0"
6	14'-0"
4	15'-0"
5	16'-0"
57	Total

Insulated Joint Stagger
 Min. = 32"
 Max. = 4'-8"



OFFSETS FOR NO. 8 R.H. TURNOUT



RAIL END DRILLING

73184-E
 Sheet 1 of 2

CONRAIL

STANDARD
NO. 8 WELDED TURNOUT
 TIE AND RAIL LAYOUT-132 R.E.

JANUARY, 1978

Chief Engineer - Maintenance of Way

Chief Engineering Officer