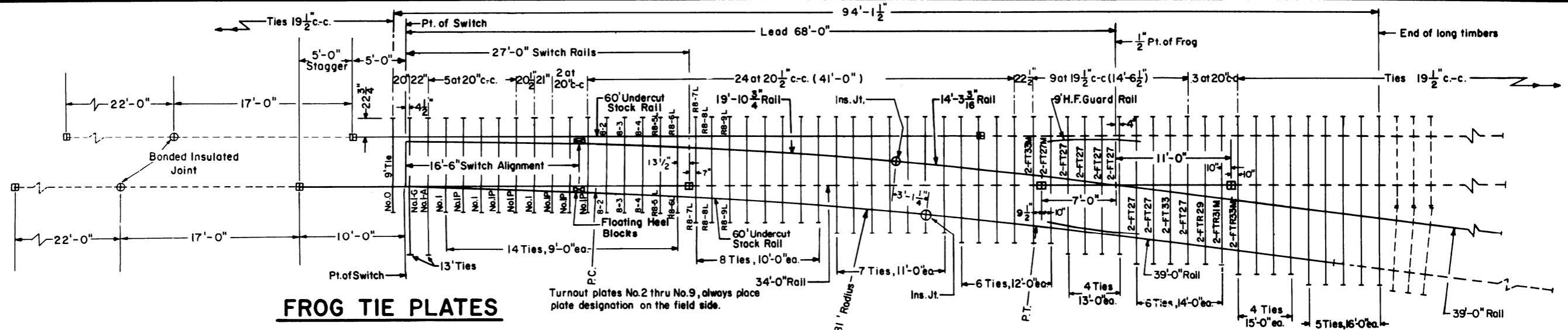


Revisions

- B-Aug.,1978
- C-Jan.,1980
- D-May,1980
- E-Dec.,1981
- F-Jun.,1983
- G-Feb.,1984
- H-Apr.,1986
- I-Dec.,1987



FROG TIE PLATES

- 14 - FT 27
 - 2 - FT 27 Modified
 - 2 - FT 33
 - 2 - FT 33 Modified
 - 2 - FTR 29
 - 2 - FTR 31 Modified
 - 2 - FTR 33 Modified
- Plan 72105-()

NOTES

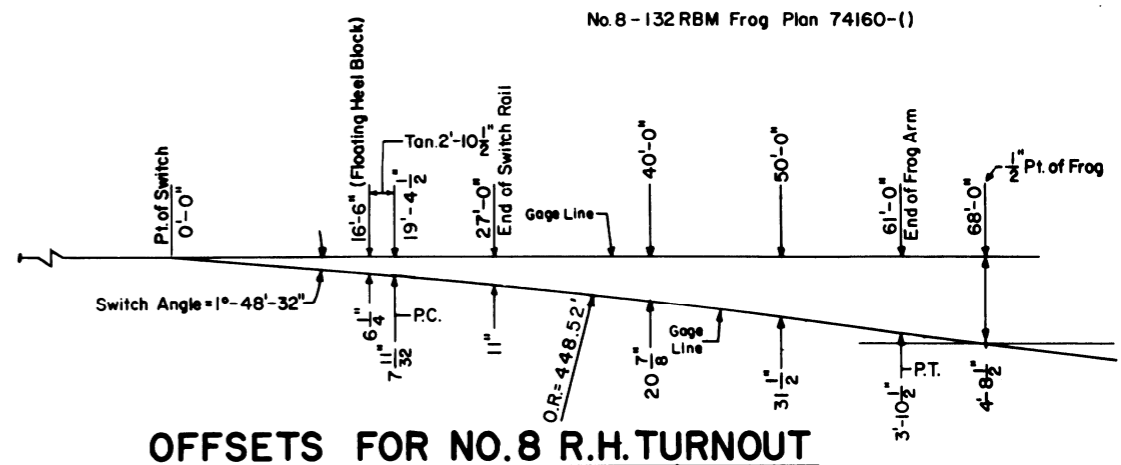
- 1 - All rails to be Fully Heat Treated and ends to be beveled.
- 2 - Switch rails to be samson.
- 3 - 60' stock rails to be undercut as per Plan 73062-().
- 4 - For switch details see Plan 73180-().
- 5 - Gage plate No.1-G as per Plan 73519-().
- 6 - Switch plates Nos.0,1,I-A and I-Pas per Plan 73519-().
- 7 - Turnout plates No.2 thru No.9, as per Plan 72220-().
- 8 - Vertical insulated switch rods and adjustable rocker clips,generally as per Plan 73518-().
- 9 - Floating heel block, as per Plan 73180-().
- 10 - All rails, including switch rails, to be drilled per Conrail Plan 71015-() for 132 R.E.rail, except that first hole is not to be drilled by the manufacturer. Conrail forces to field drill first hole when necessary.
- 11 - The rails on the turnout side are bolted joints.
- 12 - See Conrail Plan 73184-(), sheet 2, for Bill of Material.

LEGEND

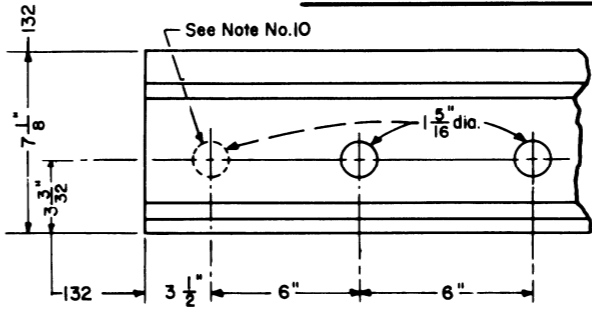
- Indicates rails furnished by the manufacturer.
- - - Indicates rails furnished by Conrail.
- + Indicates standard bolted joint with 1/8" opening.
- ⊕ Indicates insulated joints with 1/4" opening.
- ⊞ Indicates field welded joints.

LONG TIMBERS REQUIRED

QUANTITY	LENGTH
15	9'-0"
8	10'-0"
7	11'-0"
6	12'-0"
6	13'-0"
6	14'-0"
4	15'-0"
5	16'-0"
57	Total



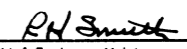
OFFSETS FOR NO.8 R.H.TURNOUT

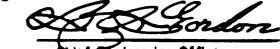


RAIL END DRILLING

CONRAIL **73184-1**
Sheet 1 of 2

STANDARD
**NO. 8 WELDED TURNOUT
TIE AND RAIL LAYOUT-132 R.E.**
JANUARY, 1978


 Chief Engineer - Maintenance of Way


 Chief Engineering Officer