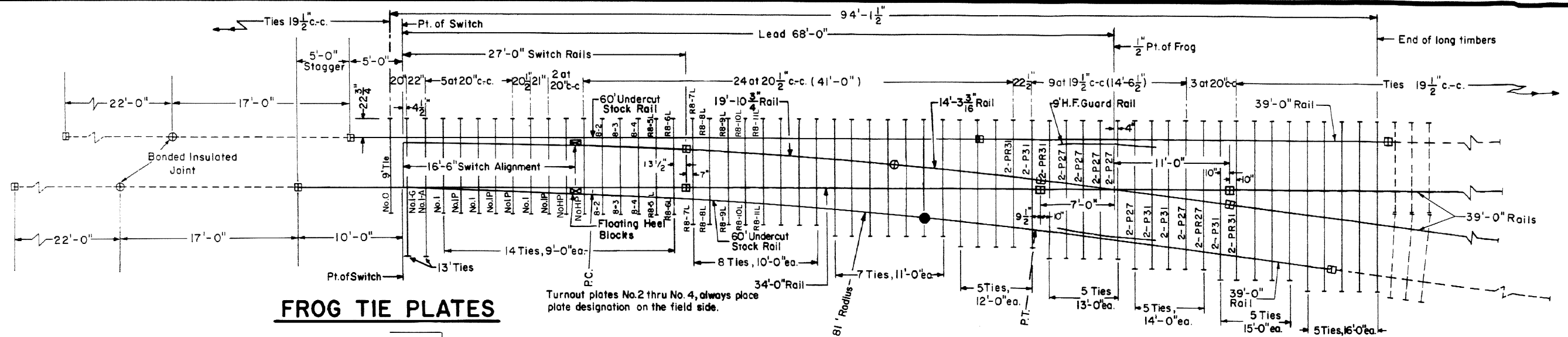


Revisions

- B - Aug., 1978
- C - Jan., 1980
- D - May, 1980
- E - Dec., 1981
- F - Jun., 1983
- G - Feb., 1984
- H - Apr., 1986
- I - Dec., 1987
- J - June, 1991
- K - March, 1993
- L - Sept, 1994
- M - Dec. 1994
- N - Feb., 1996



**FROG TIE PLATES**

- 12 - P27 SAS Plates
- 8 - P31 SAS Plates
- 2 - PR27 SAS Plates
- 6 - PR31 SAS Plates

CR Plan 72223 - ( )

**LEGEND**

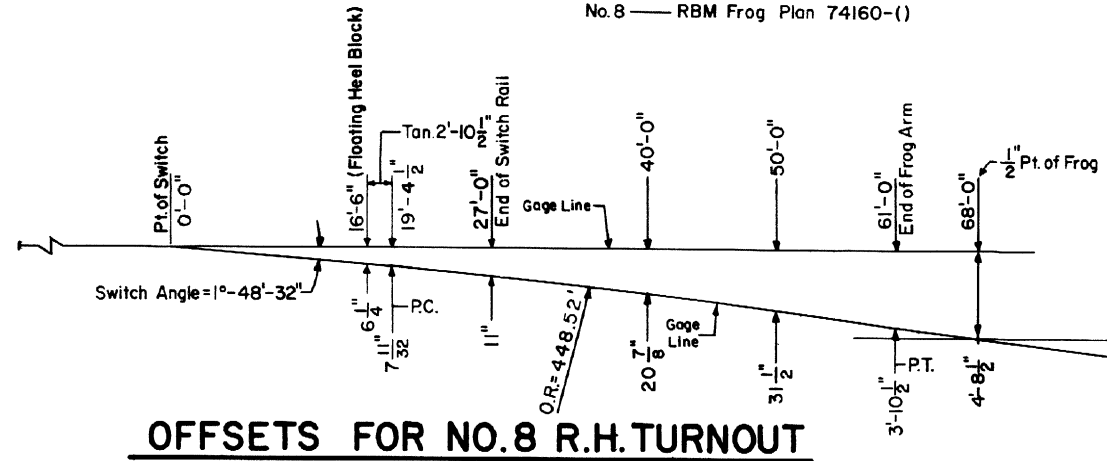
- Indicates rails furnished by the manufacturer.
- - - - Indicates rails furnished by Conrail.
- + Indicates standard bolted joint with 1/8" opening.
- ⊕ Indicates Bonded Insulated Joint
- ⊞ Indicates field welded joints.
- Indicates Encapsulated Insulated Joint.

**NOTES**

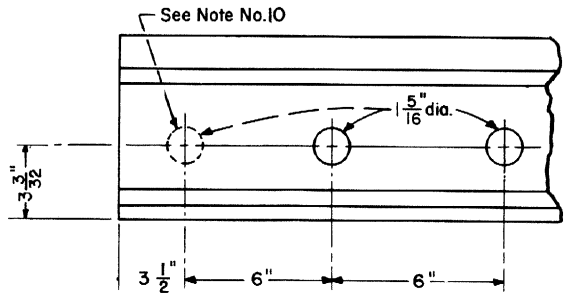
- 1 - All rails to be Fully Heat Treated and meet CR MW180 Spec.
- 2 - Switch rails to be samson.
- 3 - 60' stock rails to be undercut as per Plan 73062 - ( ).
- 4 - For switch details see Plan 73180 - ( ).
- 5 - Gage plate No. 1-G as per Plan 73522 - ( ).
- 6 - Switch plates Nos. 0, 1, I-A, HP, I-Pas per Plan 73522 - ( ).
- 7 - Turnout plates No. 2 thru No. 11, as per Plan 72222 - ( ).
- 8 - Vertical insulated switch rods and adjustable rocker clips, generally as per Plan 73518 - ( ).
- 9 - Floating heel block, as per Plan 73180 - ( ).
- 10 - All rails, including switch rails, to be drilled per Conrail Plan 71015 - ( ) or 71016 - ( ), except that first hole is not to be drilled by the manufacturer. Conrail forces to field drill first hole when necessary.
- 11 - See Conrail Plan 73184 - ( ), sheet 2, for Bill of Material.
- 12 - On Non-Insulated Turnouts curved closure rail is to be continuous. No Joint.
- 13 - Bonded and Encapsulated Insulated Joints furnished with Turnout and manufactured by Approved Vendor

**LONG TIMBERS REQUIRED**

| QUANTITY | LENGTH |
|----------|--------|
| 15       | 9'-0"  |
| 8        | 10'-0" |
| 7        | 11'-0" |
| 5        | 12'-0" |
| 7        | 13'-0" |
| 5        | 14'-0" |
| 5        | 15'-0" |
| 5        | 16'-0" |
| 57       | Total  |



**OFFSETS FOR NO. 8 R.H. TURNOUT**



**RAIL END DRILLING**

ALL PANDROL TURNOUT

**CONRAIL** **73184-N**  
Sheet 1 of 2

**NO. 8 WELDED TURNOUT**  
**TIE AND RAIL LAYOUT**

JANUARY, 1978

*R.H. Smith*  
Chief Engineer - Maintenance of Way

*A.D. Gordon*  
Chief Engineering Officer