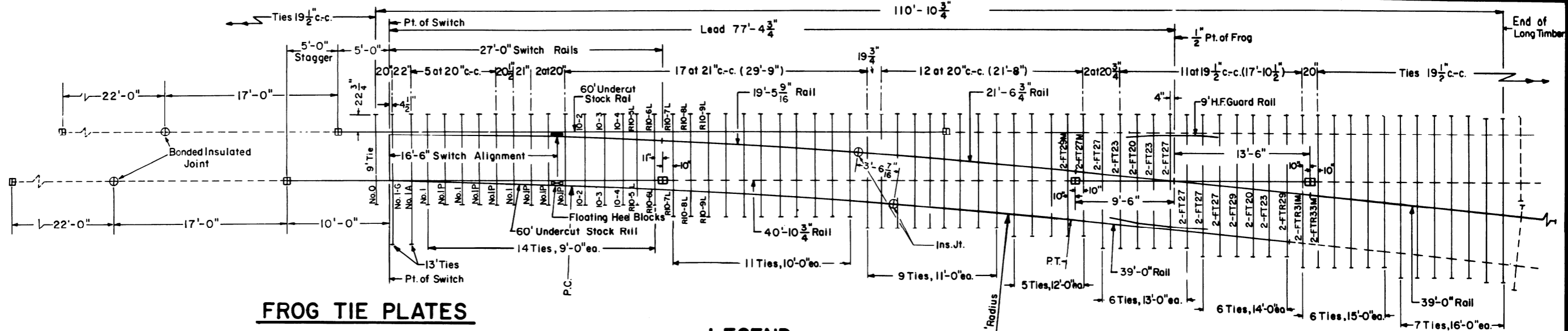


- Revisions  
 B-Aug.,1978  
 C-May,1980  
 D-Dec.,1981  
 E-Jun.,1983  
 F-Feb.,1984  
 G-May,1986



**FROG TIE PLATES**

- 4 - FT 20
  - 6 - FT 23
  - 10 - FT 27
  - 2 - FT 27 Modified
  - 2 - FT 29
  - 2 - FT 29 Modified
  - 2 - FTR 29
  - 2 - FTR 31 Modified
  - 2 - FTR 33 Modified
- Plan 72105-()

**NOTES**

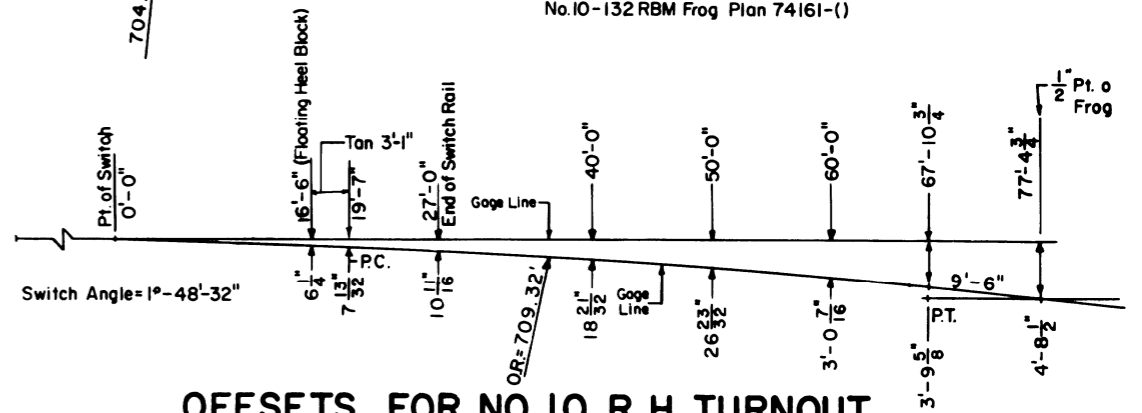
- 1 - All rails to be Fully Heat Treated.
- 2 - Switch rails to be samson.
- 3 - 60' stock rails, to be undercut as per Plan 73062-().
- 4 - For switch details see Plan 73181-().
- 5 - Gage plate No. I-G as per Plan 73519-().
- 6 - Switch plates Nos. O, I, IA and IP as per Plan 73519-().
- 7 - Turnout plates, No. 2 thru No. 9, as per Plan 72220-().
- 8 - Vertical insulated switch rods and adjustable rocker clips, generally as per Plan 73518-().
- 9 - Floating heel block, as per Plan 73181-().
- 10 - All rails, including switch rails, to be drilled per Conrail Plan 71015-() for 132 R.E. rail, except that first hole is not to be drilled by the manufacturer. Conrail forces to field drill first hole when necessary.
- 11 - The rails on the turnout side are bolted joints.
- 12 - See Conrail Plan 73184-(), sheet 2, for Bill of Material

**LEGEND**

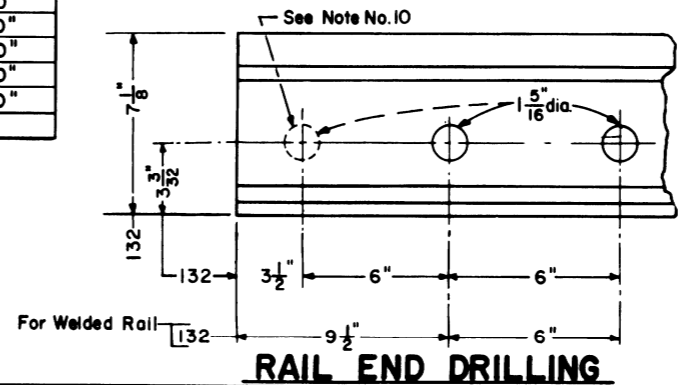
- Indicates rails furnished by the manufacturer.
- - - Indicates rails furnished by Conrail.
- + Indicates standard bolted joint with 1/8" opening.
- ⊕ Indicates insulated joints with 1/4" opening.
- ⊞ Indicates field welded joints.

**LONG TIMBERS REQUIRED**

QUANTITY	LENGTH
15	9'-0"
11	10'-0"
9	11'-0"
5	12'-0"
8	13'-0"
6	14'-0"
6	15'-0"
7	16'-0"
67	Total



**OFFSETS FOR NO. 10 R.H. TURNOUT**



**RAIL END DRILLING**

**CONRAIL 73185-G**

STANDARD

**NO. 10 WELDED TURNOUT  
TIE AND RAIL LAYOUT-132 R.E.**

JANUARY, 1978

Chief Engineer - Maintenance of Way
 Chief Engineering Officer