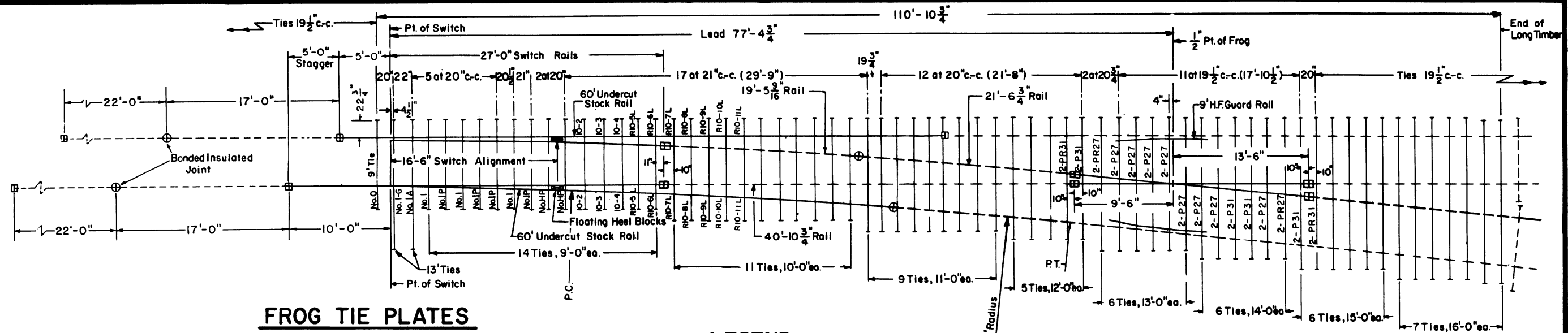


- Revisions  
 B-Aug., 1978  
 C-May, 1980  
 D-Dec., 1981  
 E-Jun., 1983  
 F-Feb., 1984  
 G-May, 1986  
 H-May, 1991



**FROG TIE PLATES**

- 16 - P27 SAS Plates
  - 8 - P31 SAS Plates
  - 4 - PR27 SAS Plates
  - 4 - PR31 SAS Plates
- CR Plan 66634-()

**LEGEND**

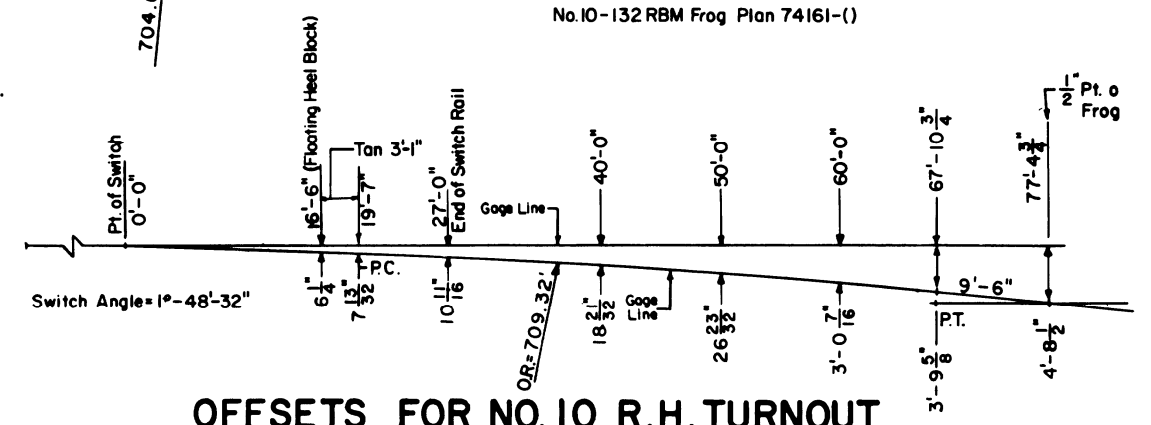
- Indicates rails furnished by the manufacturer.
- - - Indicates rails furnished by Conrail.
- + Indicates standard bolted joint with 1/8" opening.
- ⊕ Indicates Bonded Insulated Joint
- ⊞ Indicates field welded joints.

**NOTES**

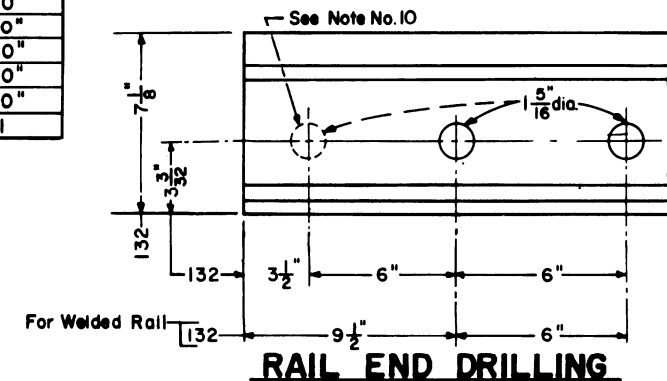
- 1 - All rails to be Fully Heat Treated.
- 2 - Switch rails to be samson.
- 3 - 60' stock rails, to be undercut as per Plan 73062-().
- 4 - For switch details see Plan 73181-().
- 5 - Gage plate No. I-G as per Plan 73522-().
- 6 - Switch plates Nos. O, I, IA, HP, IP as per Plan 73522-().
- 7 - Turnout plates, No. 2 thru No. 11, as per Plan 72220-().
- 8 - Vertical insulated switch rods and adjustable rocker clips, generally as per Plan 73518-().
- 9 - Floating heel block, as per Plan 73181-().
- 10 - All rails, including switch rails, to be drilled per Conrail Plan 71015-() for 132 R.E. rail, except that first hole is not to be drilled by the manufacturer. Conrail forces to field drill first hole when necessary.
- 11 - See Conrail Plan 73184-(), sheet 2, for Bill of Material

**LONG TIMBERS REQUIRED**

QUANTITY	LENGTH
15	9'-0"
11	10'-0"
9	11'-0"
5	12'-0"
8	13'-0"
6	14'-0"
6	15'-0"
7	16'-0"
67	Total



**OFFSETS FOR NO. 10 R.H. TURNOUT**



**CONRAIL 73185-H**  
 STANDARD  
**NO. 10 WELDED TURNOUT**  
**TIE AND RAIL LAYOUT-132 R.E.**  
 JANUARY, 1978  
*R.H. Smith* Chief Engineer - Maintenance of Way  
*Chas. E. Carlson* Chief Engineering Officer