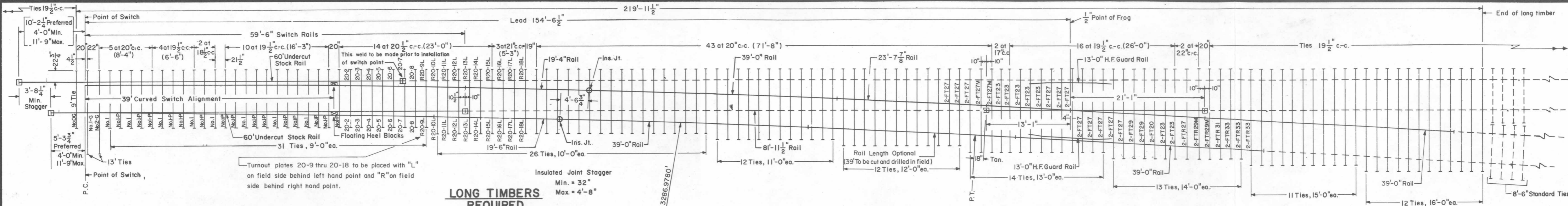


Revisions
 A - Aug., 1978
 B - May, 1980
 C - Dec., 1981



NOTES

- 1 - Stock rails and switch points to be fully heat treated, all other rails to be end hardened.
- 2 - Switch rails to be undercut.
- 3 - 60' stock rails, are to be undercut as per Plan 73062-().
- 4 - Gage plates O-G, I-G and 2-G as per Plan 73513-().
- 5 - Switch plates Nos. 1 and I-P as per Plan 73513-().
- 6 - Turnout plates, No. 2 thru No. 18 as per Plan 72221-().
- 7 - Vertical insulated switch rods and adjustable rocker clips generally as per Plan 73514-().
- 8 - Floating heel block as per Plan 73183-().
- 9 - For switch details see Plan 73183-().
- 10 - All rails, including switch rails, to be drilled per Conrail Plan 7101 -() for 132 R.E. rail, except that first hole is not to be drilled by the manufacturer. Conrail forces to field drill first hole when necessary.
- 11 - The rails on the turnout side are bolted joints.
- 12 - See Conrail Plan 73184-(), sheet 2, for Bill of Material

LONG TIMBERS REQUIRED

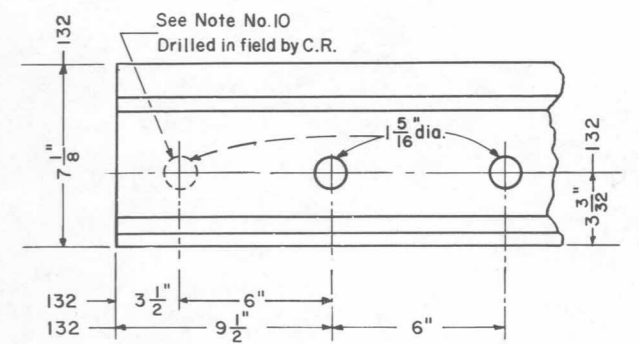
QUANTITY	LENGTH
32	9'-0"
26	10'-0"
12	11'-0"
12	12'-0"
16	13'-0"
13	14'-0"
11	15'-0"
12	16'-0"
134	Total

FROG TIE PLATES REQUIRED

- 2 - FT 20
 - 14 - FT 23
 - 22 - FT 27
 - 4 - FT 27 Modified
 - 4 - FT 29
 - 2 - FTR 27
 - 4 - FTR 29 Modified
 - 2 - FTR 31
 - 6 - FTR 33
 - 60 Total
- Plan 72105-()

LEGEND

- Indicates rails furnished by the manufacturer.
- - - Indicates rails furnished by Conrail.
- + Indicates standard bolted joint with 1/8" opening.
- ⊕ Indicates insulated joints with 1/4" opening.
- ⊞ Indicates field welded joints.



RAIL END DRILLING

CONRAIL 73187-D

STANDARD

NO. 20 WELDED TURNOUT TIE AND RAIL LAYOUT-132 R.E.

JANUARY, 1978

R. Smith
 Chief Engineer - Maintenance of Way

A. J. Carlson
 Chief Engineering Officer

OFFSETS FOR NO. 20 R.H. TURNOUT

