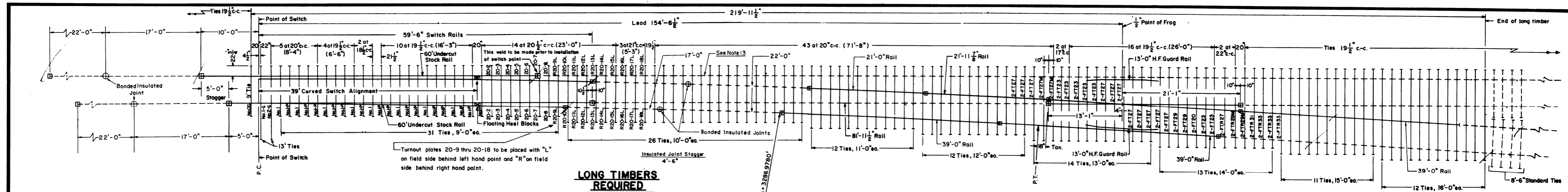


Revisions
 B-Aug, 1978
 C-May, 1980
 D-Dec, 1981
 E-Jun, 1983
 F-Feb, 1984
 G-May, 1986



LONG TIMBERS REQUIRED

QUANTITY	LENGTH
32	9'-0"
26	10'-0"
12	11'-0"
12	12'-0"
16	13'-0"
13	14'-0"
11	15'-0"
12	16'-0"
134	Total

FROG TIE PLATES REQUIRED

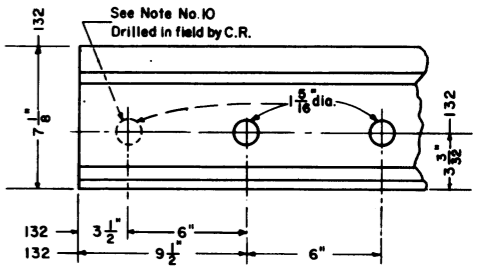
- 2 - FT 20
 - 14 - FT 23
 - 22 - FT 27
 - 4 - FT 27 Modified
 - 4 - FT 29
 - 2 - FTR 27
 - 4 - FTR 29 Modified
 - 2 - FTR 31
 - 6 - FTR 33
 - 60 Total
- Plan 72105-(-)

LEGEND

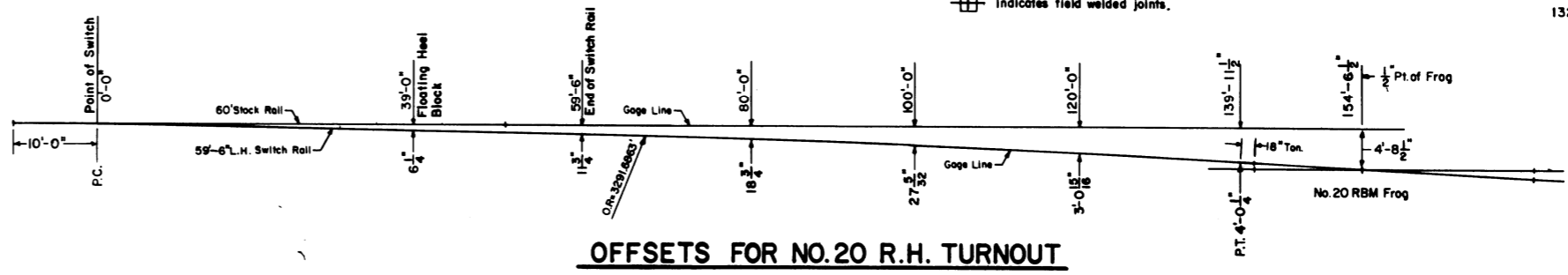
- Indicates rails furnished by the manufacturer.
- - - Indicates rails furnished by Conrail.
- ⊕ Indicates standard bolted joint with 1/8" opening.
- ⊕ Indicates bonded insulated joint.
- ⊕ Indicates field welded joints.

NOTES

- 1 - All rails to be Fully Heat Treated.
- 2 - Switch rails to be undercut.
- 3 - 60' stock rails, are to be undercut as per Plan 73062-(-).
- 4 - Gage plates O-G, I-G and 2-G as per Plan 73513-(-).
- 5 - Switch plates Nos. 1 and I-P as per Plan 73513-(-).
- 6 - Turnout plates, No. 2 thru No. 18 as per Plan 72221-(-).
- 7 - Vertical insulated switch rods and adjustable rocker clips generally as per Plan 73514-(-).
- 8 - Floating heel block as per Plan 73183-(-).
- 9 - For switch details see Plan 73183-(-).
- 10 - All rails, including switch rails, to be drilled per Conrail Plan 71015-(-) for 132 R.E. rail, except that first hole is not to be drilled by the manufacturer. Conrail forces to field drill first hole when necessary.
- 11 - See Conrail Plan 73184-(-), sheet 2, for Bill of Material.
- 12 - When a third insulated joint is required (as per Plan 71325-(-), Sheet 2) weld the 22'-0" end of the 39'-0" Bonded Joint Plug to the end of the 60'-0" stock rail on the straight (Main Line) side.



RAIL END DRILLING



OFFSETS FOR NO. 20 R.H. TURNOUT

CONRAIL 73187-G

STANDARD

**NO. 20 WELDED TURNOUT
TIE AND RAIL LAYOUT-132 R.E.**

JANUARY, 1978

Chief Engineer-Maintenance of Way

Chief Engineering Officer