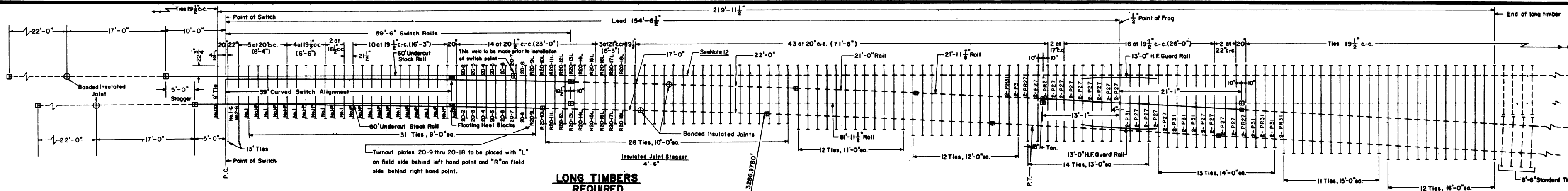


- Revisions
 B-Aug., 1978
 C-May, 1980
 D-Dec., 1981
 E-Jun., 1983
 F-Feb., 1984
 G-May, 1986
 H-June, 1991



LONG TIMBERS REQUIRED

QUANTITY	LENGTH
32	9'-0"
26	10'-0"
12	11'-0"
12	12'-0"
16	13'-0"
13	14'-0"
11	15'-0"
12	16'-0"
134	Total

FROG TIE PLATES REQUIRED

- 34 - P27 SAS Plates
 - 14 - P31 SAS Plates
 - 6 - PR27 SAS Plates
 - 6 - PR31 SAS Plates
- CR Plan 66634-(1)

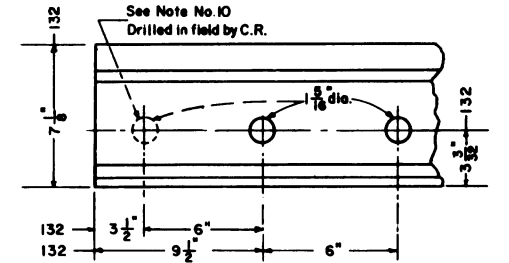
No. 20 RBM Frog - 132-R.E. Plan 74163-(1)

NOTES

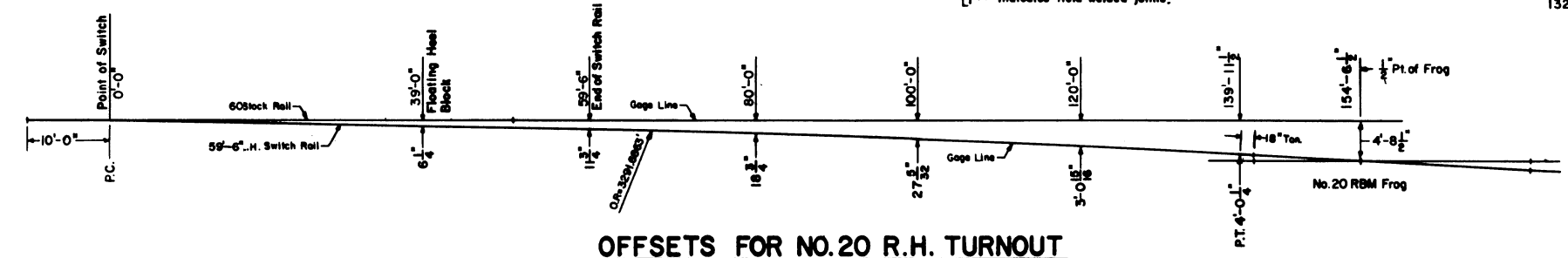
- All rails to be Fully Heat Treated.
- Switch rails to be undercut.
- 60' stock rails, are to be undercut as per Plan 73062-(1).
- Gage plates 0-G, 1-G and 2-G as per Plan 73522-(1).
- Switch plates Nos. 1 and 1-P as per Plan 73522-(1).
- Turnout plates, No. 2 thru No. 18 as per Plan 72221-(1).
- Vertical insulated switch rods and adjustable rocker clips generally as per Plan 73514-(1).
- Floating heel block as per Plan 73183-(1).
- For switch details see Plan 73183-(1).
- All rails, including switch rails, to be drilled per Conrail Plan 71015-(1) for 132 R.E. rail, except that first hole is not to be drilled by the manufacturer. Conrail forces to field drill first hole when necessary.
- See Conrail Plan 73184-(1), sheet 2, for Bill of Material
- When a third insulated joint is required (as per Plan 71325-(1), Sheet 2) weld the 22'-0" end of the 39'-0" Bonded Joint Plug to the end of the 60'-0" stock rail on the straight (Main Line) side.

LEGEND

- Indicates rails furnished by the manufacturer.
- Indicates rails furnished by Conrail.
- Indicates standard bolted joint with 1/2" opening.
- Indicates bonded insulated joint
- Indicates field welded joints.



RAIL END DRILLING



OFFSETS FOR NO. 20 R.H. TURNOUT

CONRAIL 73187-H

STANDARD

NO. 20 WELDED TURNOUT TIE AND RAIL LAYOUT-132 R.E.

JANUARY, 1978

R.D. Smith
Chief Engineer - Maintenance of Way

O.P. ...
Chief Engineering Officer