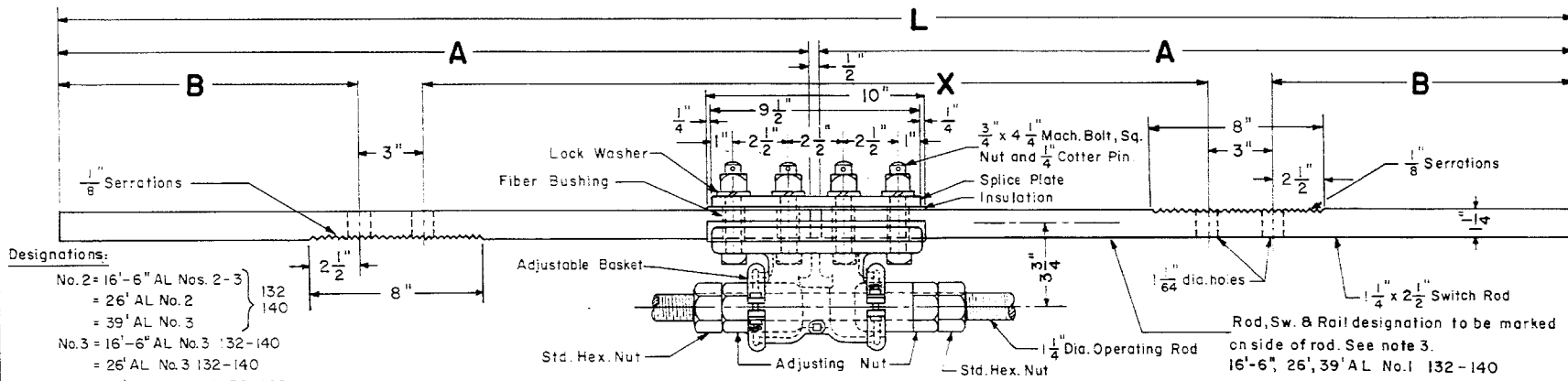
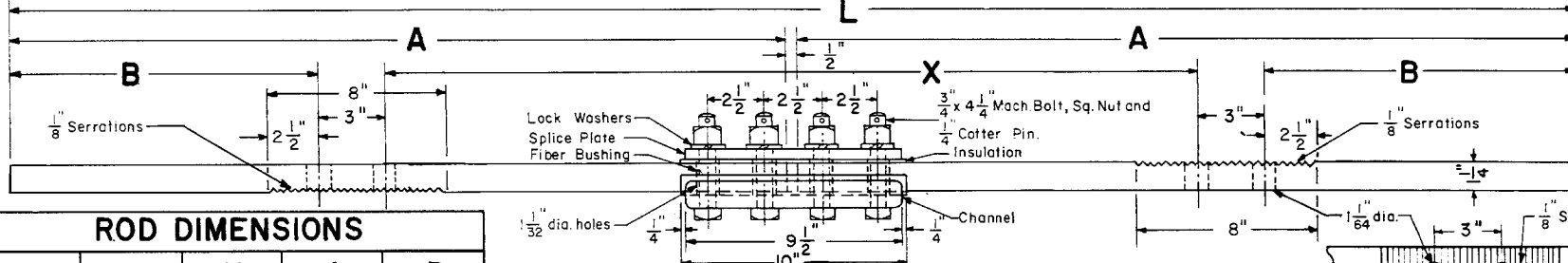


Revised
 B - Jan. 1978
 C - Mar. 1980
 D - Oct. 1983
 E - May, 1986



Designations:
 No. 2 = 16'-6" AL Nos. 2-3 } 132
 = 26' AL No. 2 } 140
 = 39' AL No. 3
 No. 3 = 16'-6" AL No. 3 } 132-140
 = 26' AL No. 3 } 132-140
 Nos. 4 & 5 = 26' AL Nos. 4-5 } 132-140
 = 39' AL No. 6 } 132-140

INSULATED SWITCH ROD NO. 1 WITH ADJUSTABLE BASKET

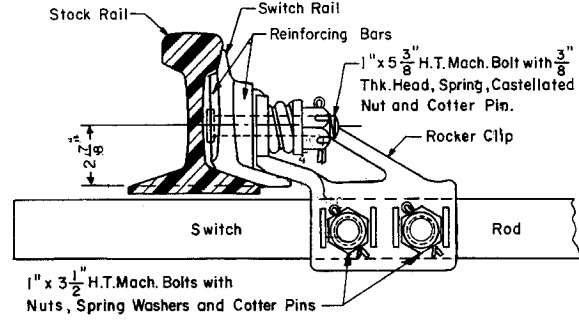


INSULATED SWITCH RODS NOS. 2, 3, 4 & 5*

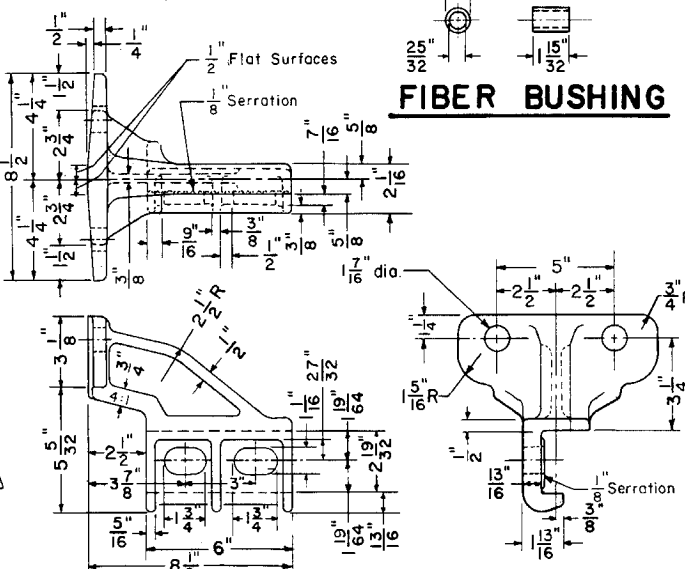
(* See Note No. 4)

ROD DIMENSIONS				
ROD NO.	L	X	A	B
1	5'-10"	2'-11 ⁷ / ₈ "	2'-10 ³ / ₄ "	14 ¹ / ₁₆ "
2	4'-4"	3'-0 ¹¹ / ₃₂ "	2'-1 ³ / ₄ "	4 ⁵³ / ₆₄ "
3	4'-4"	3'-1 ¹ / ₈ "	2'-1 ³ / ₄ "	4 ⁷ / ₁₆ "
4	5'-10"	3'-2 ⁷ / ₁₆ "	2'-10 ³ / ₄ "	12 ²⁵ / ₃₂ "
* 5	5'-10"	3'-2 ⁷ / ₁₆ "	2'-10 ³ / ₄ "	12 ²⁵ / ₃₂ "

(* See Note No. 4)

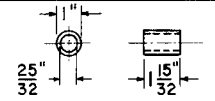


ASSEMBLED ROCKER CLIP

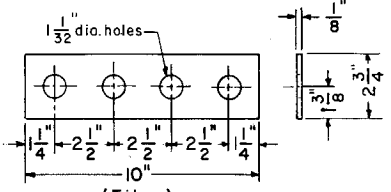


ADJUSTABLE ROCKER CLIP

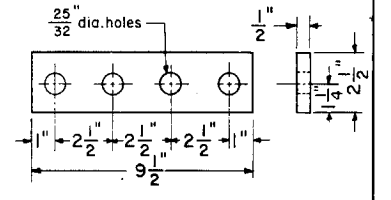
FIBER BUSHING



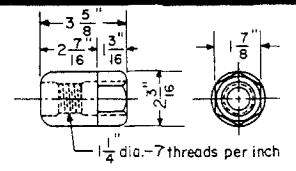
ELEVATION - SWITCH RODS



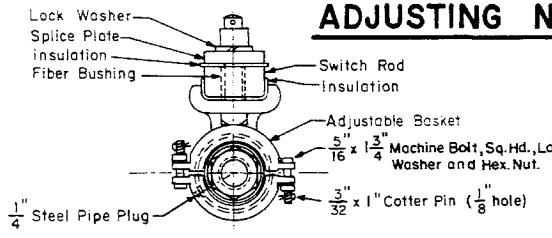
INSULATION PLATE FOR SPLICE PLATE



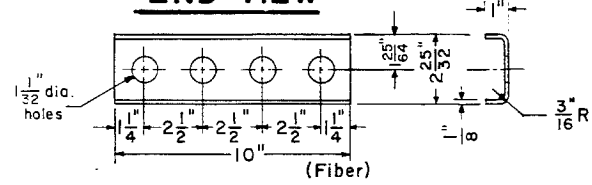
SPLICE PLATE



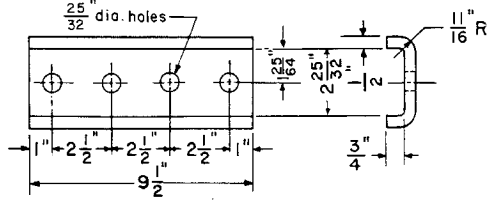
ADJUSTING NUT



END VIEW



INSULATION FOR CHANNEL



CHANNEL - STEEL

NOTES

- 1 - All switch rods shall conform to current A.R.E.A Specifications.
- 2 - All fiber parts shall conform to current A.A.R. Signal Section Manual, Part 58, Specifications 13 - Hard Fiber.
- 3 - Each switch rod shall be marked with deeply cut characters, not less than 1/2 inch high, with rod designation and rail section.
- * 4 - No. 5 switch rod is only required on switches for welded turnouts.

CONRAIL 73516-E

STANDARD
**VERTICAL SWITCH RODS
 AND ADJUSTABLE ROCKER CLIPS**
 FOR 26'-0" SWITCH-132 LB. OR 140 LB. R.E. RAIL

R.H. Smith NOVEMBER, 1976 *A.P. Gordon*
 Chief Engineer - Maintenance of Way Chief Engineering Officer