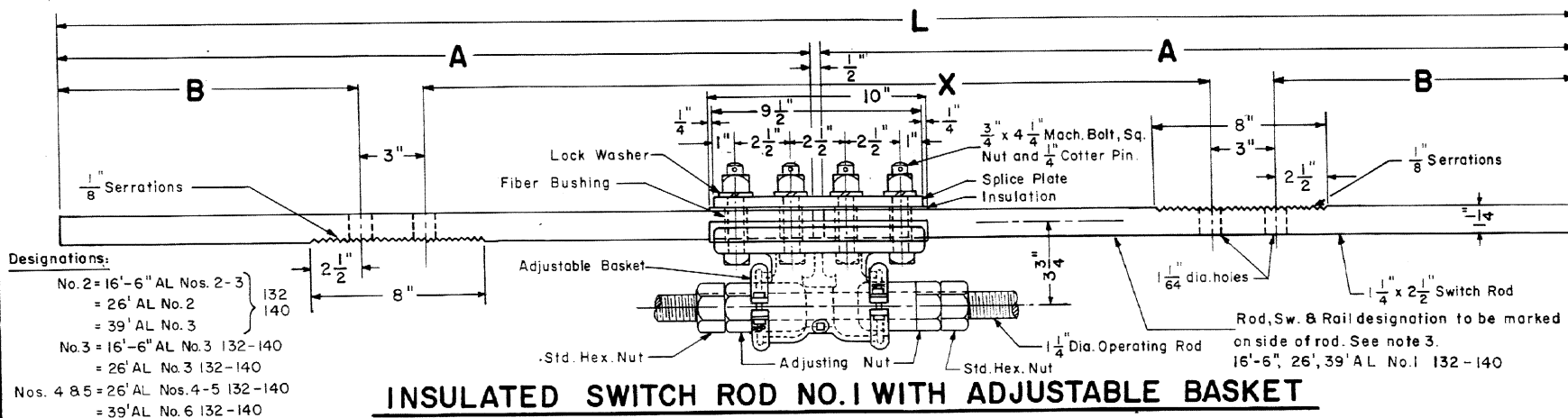


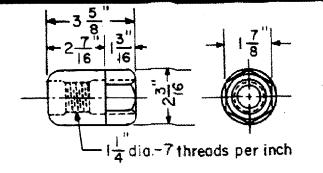
Revised
 B - Jan. 1978
 C - Mar. 1980
 D - Oct. 1983
 E - May, 1986
 F - Sept., 1987



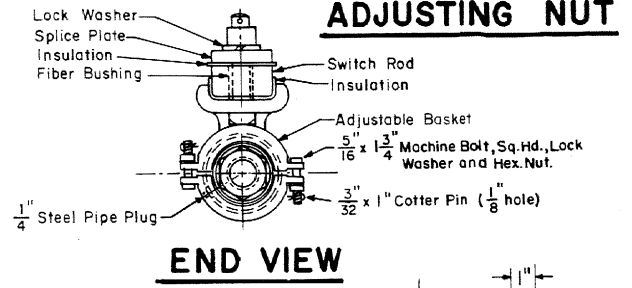
Designations:

No. 2 = 16'-6" AL Nos. 2-3	132 140
= 26' AL No. 2	
= 39' AL No. 3	
No. 3 = 16'-6" AL No. 3	132-140
= 26' AL No. 3	
Nos. 4 & 5 = 26' AL Nos. 4-5	132-140
= 39' AL No. 6	

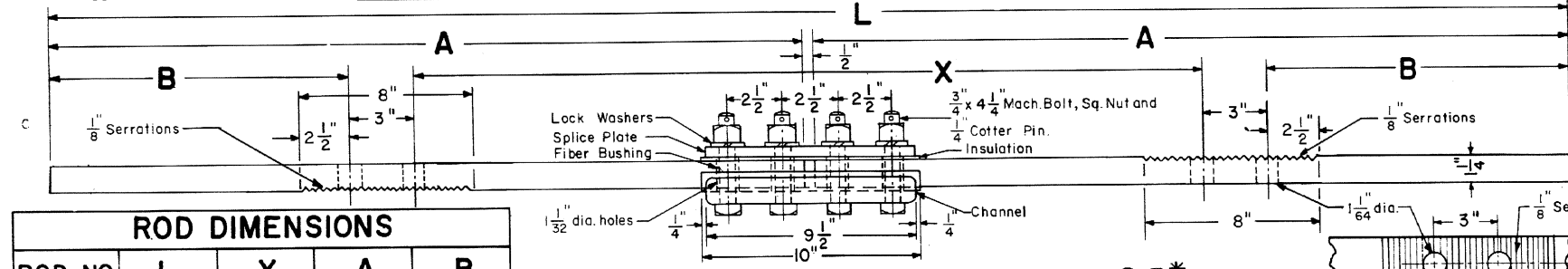
INSULATED SWITCH ROD NO. 1 WITH ADJUSTABLE BASKET



ADJUSTING NUT



END VIEW



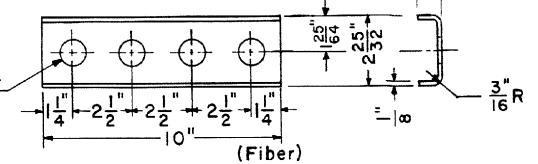
INSULATED SWITCH RODS NOS. 2, 3, 4 & 5*

ROD DIMENSIONS

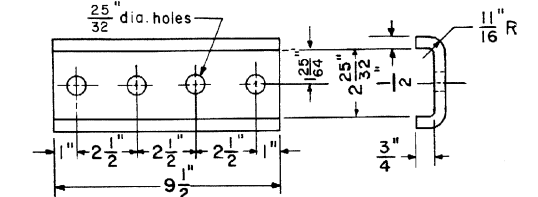
ROD NO.	L	X	A	B
1	5'-10"	2'-11 7/8"	2'-10 3/4"	14 1/16"
2	4'-4"	3'-0 11/32"	2'-1 3/4"	4 53/64"
3	4'-4"	3'-1 1/8"	2'-1 3/4"	4 7/16"
4	5'-10"	3'-2 7/16"	2'-10 3/4"	12 25/32"
* 5	5'-10"	3'-2 7/16"	2'-10 3/4"	12 25/32"

(* See Note No. 4)

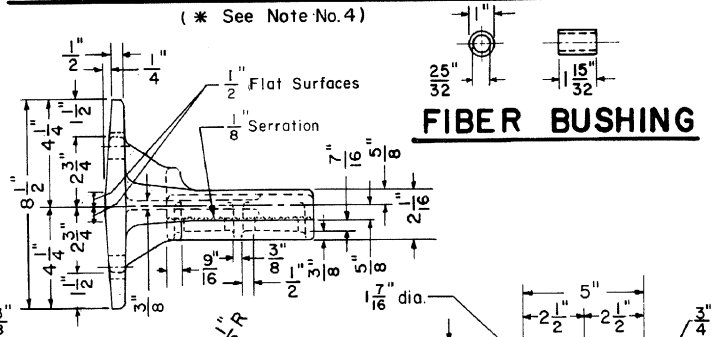
ELEVATION - SWITCH RODS



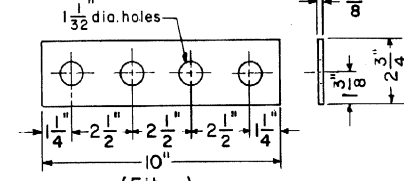
INSULATION FOR CHANNEL



CHANNEL - STEEL



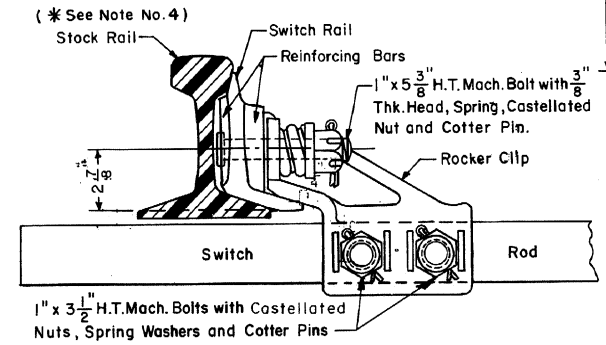
FIBER BUSHING



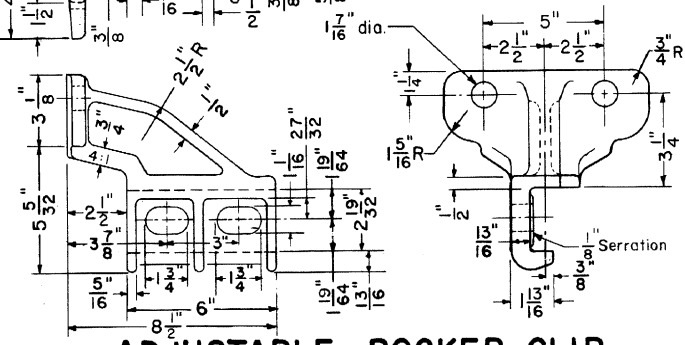
INSULATION PLATE FOR SPLICE PLATE

NOTES

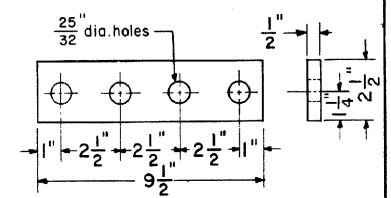
- 1 - All switch rods shall conform to current A.R.E.A. Specifications.
- 2 - All fiber parts shall conform to current A.A.R. Signal Section Manual, Part 58, Specifications 13 - Hard Fiber.
- 3 - Each switch rod shall be marked with deeply cut characters, not less than 1/2" high, with rod designation and rail section.
- * 4 - No. 5 switch rod is only required on switches for welded turnouts.



ASSEMBLED ROCKER CLIP



ADJUSTABLE ROCKER CLIP



SPLICE PLATE

CONRAIL 73516-F

STANDARD

VERTICAL SWITCH RODS AND ADJUSTABLE ROCKER CLIPS

FOR 26'-0" SWITCH-132 LB. OR 140 LB. R.E. RAIL

NOVEMBER, 1976

R.H. Smith Chief Engineer - Maintenance of Way
P.D. Yarden Chief Engineering Officer