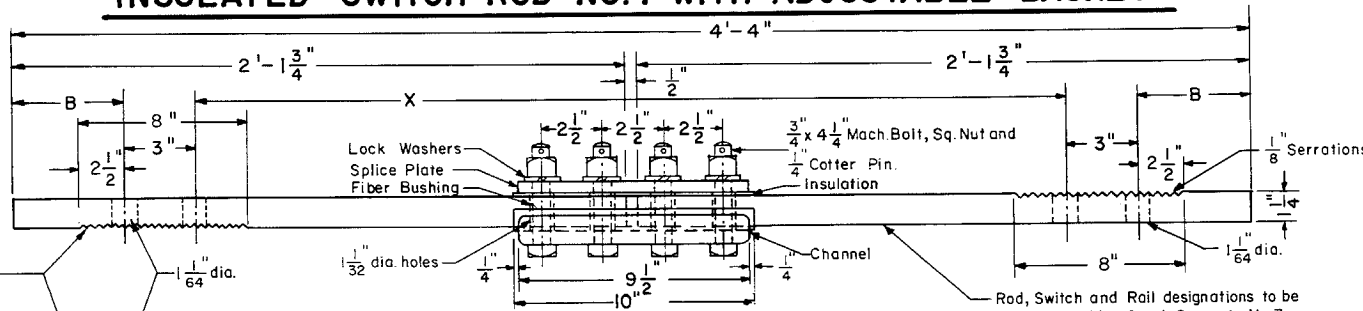


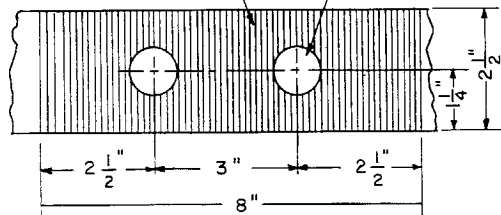
**INSULATED SWITCH ROD NO. 1 WITH ADJUSTABLE BASKET**

ROD NO.	X	B
2	3'-0 11/32"	4 53/64"
3	3'-1 1/8"	4 7/16"

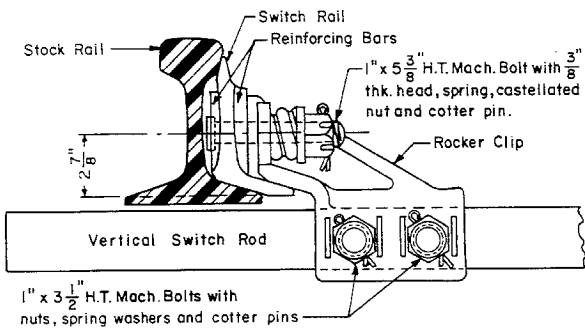


**INSULATED SWITCH RODS-NOS.2&3\***

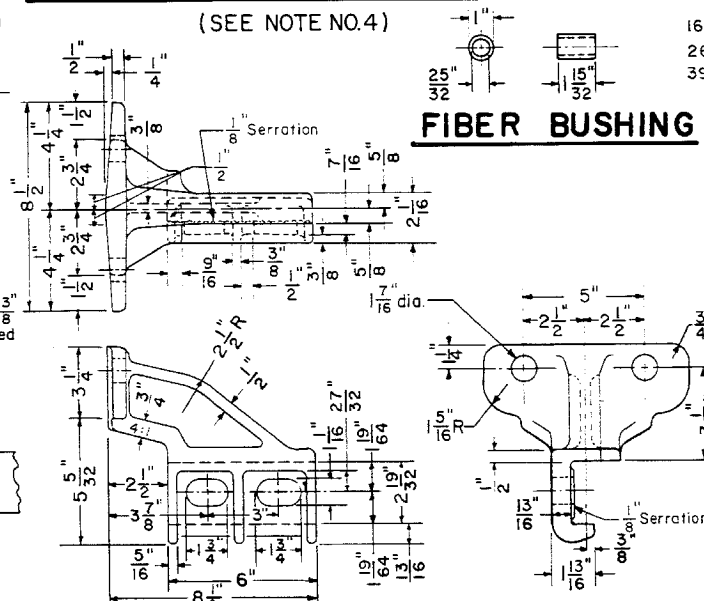
(SEE NOTE NO.4)



**ELEVATION-SWITCH RODS**

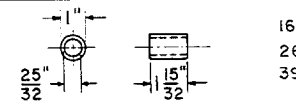


**ASSEMBLED ROCKER CLIP**

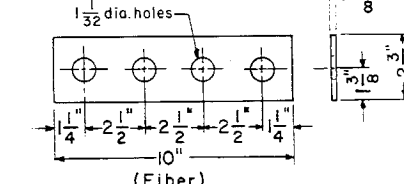


**ADJUSTABLE ROCKER CLIP**

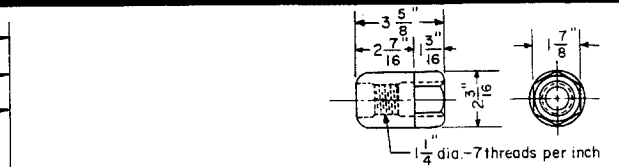
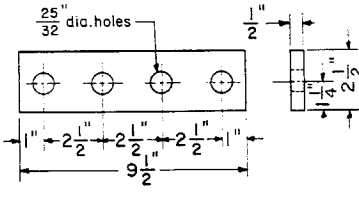
**FIBER BUSHING**



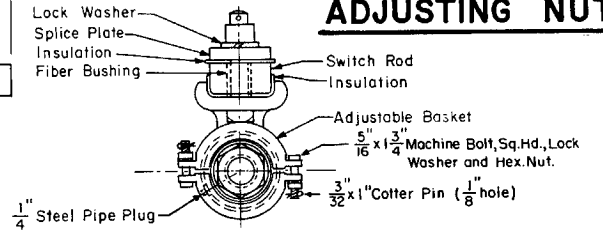
**INSULATION PLATE FOR SPLICE PLATE**



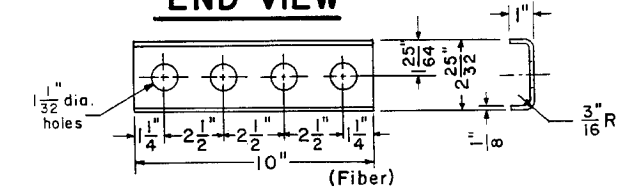
**SPLICE PLATE**



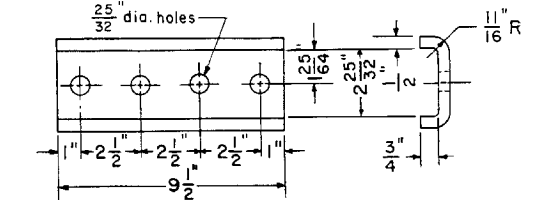
**ADJUSTING NUT**



**END VIEW**



**INSULATION FOR CHANNEL**



**CHANNEL-STEEL**

**NOTES**

- 1- All switch rods shall conform to current A.R.E.A. Specifications.
- 2- All fiber parts shall conform to current A.A.R. Signal Section Manual, Part 58, Specifications 13 - Hard Fiber.
- 3- Each switch rod shall be marked with deeply cut characters, not less than 1/2" high, with rod, switch and rail designations.
- \* 4- No.3 switch rod is only required on switches for welded turnouts.

**CONRAIL** **73518-D**

STANDARD  
**VERTICAL SWITCH RODS  
 AND ADJUSTABLE ROCKER CLIPS**  
 FOR 16'-6" SWITCH-UNDERCUT - 132 R.E. or 140 R.E. RAIL  
 NOVEMBER 1976

*R.H. Smith*  
 Chief Engineer - Maintenance of Way

*A.B. Gardner*  
 Engineering Officer