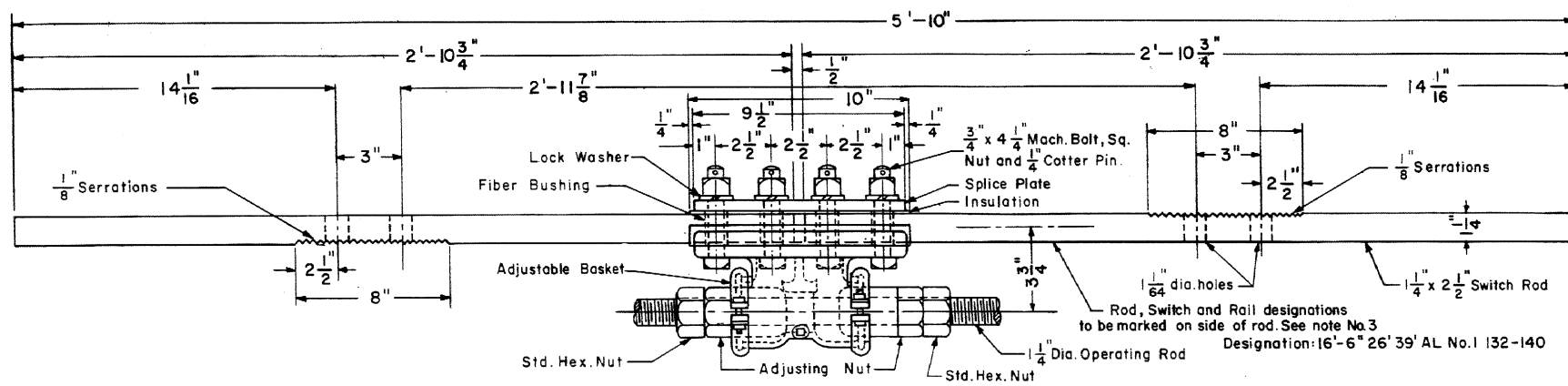
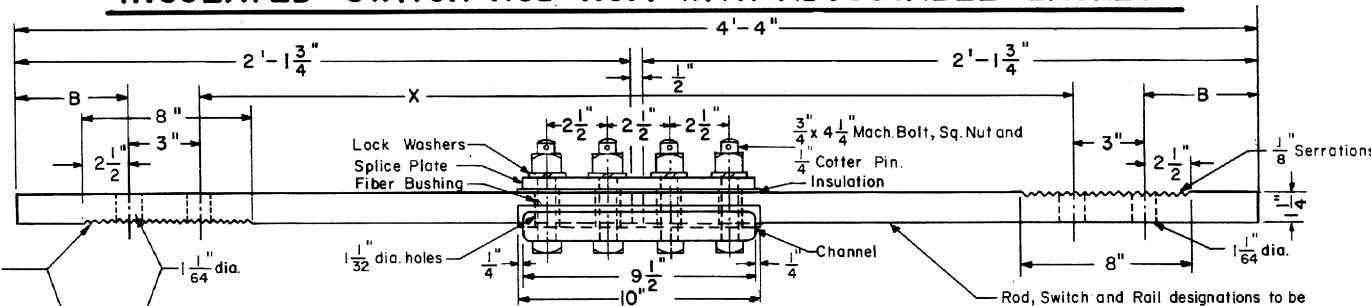


Revised  
 B - Jan. 1978  
 C - Jan. 1980  
 D - Oct. 1983  
 E - May, 1986  
 F - Sept., 1987



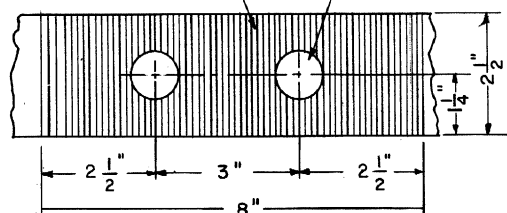
**INSULATED SWITCH ROD NO. 1 WITH ADJUSTABLE BASKET**

ROD NO.	X	B
2	3'-0 11/32"	4 53/64"
3	3'-1 1/8"	4 7/16"

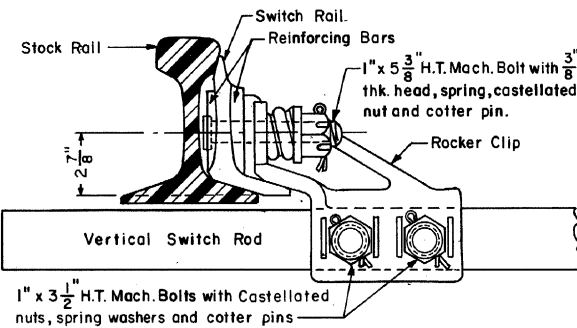


**INSULATED SWITCH RODS-NOS. 2 & 3\***

(SEE NOTE NO. 4)

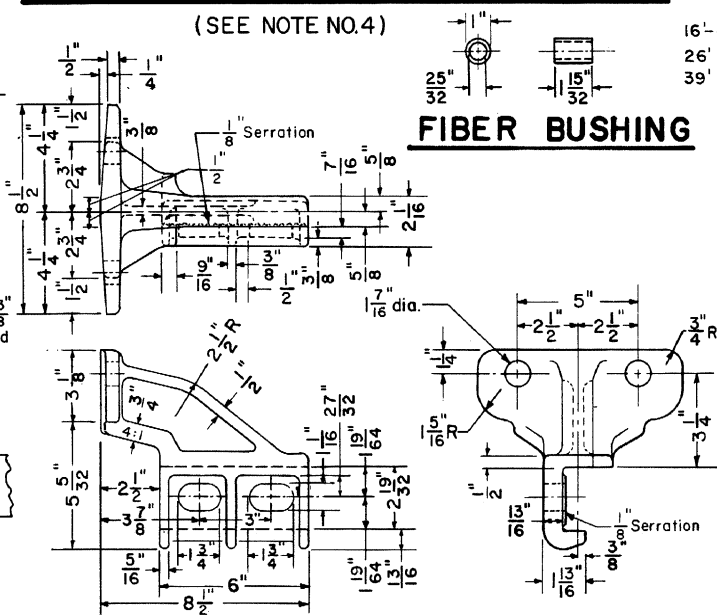


**ELEVATION-SWITCH RODS**



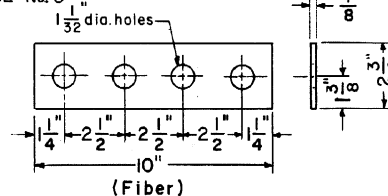
**ASSEMBLED ROCKER CLIP**

1" x 3 1/2" H.T. Mach. Bolts with Castellated nuts, spring washers and cotter pins

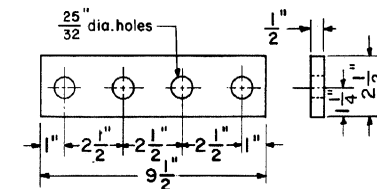


**FIBER BUSHING**

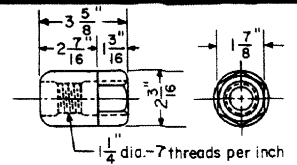
**ADJUSTABLE ROCKER CLIP**



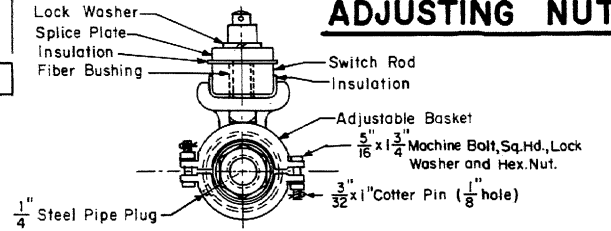
**INSULATION PLATE FOR SPLICE PLATE**



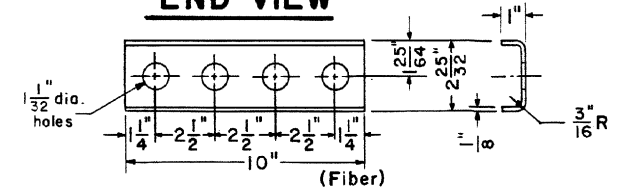
**SPLICE PLATE**



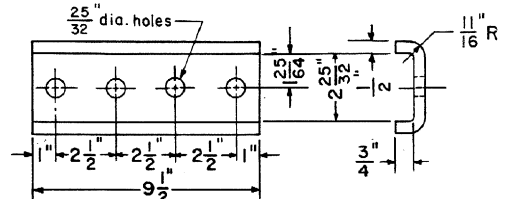
**ADJUSTING NUT**



**END VIEW**



**INSULATION FOR CHANNEL**



**CHANNEL-STEEL**

**NOTES**

- 1- All switch rods shall conform to current A.R.E.A. Specifications.
- 2- All fiber parts shall conform to current A.A.R. Signal Section Manual, Part 58, Specifications 13 - Hard Fiber.
- 3- Each switch rod shall be marked with deeply cut characters, not less than 1/2" high, with rod, switch and rail designations.
- \* 4- No. 3 switch rod is only required on switches for welded turnouts.

**CONRAIL**

**73518-F**

STANDARD

**VERTICAL SWITCH RODS AND ADJUSTABLE ROCKER CLIPS**

FOR 16'-6" SWITCH-UNDERCUT 132 R.E. or 140 R.E. RAIL

NOVEMBER, 1976

R.H. Smith  
Chief Engineer - Maintenance of Way

A.J. Gardner  
Engineering Officer