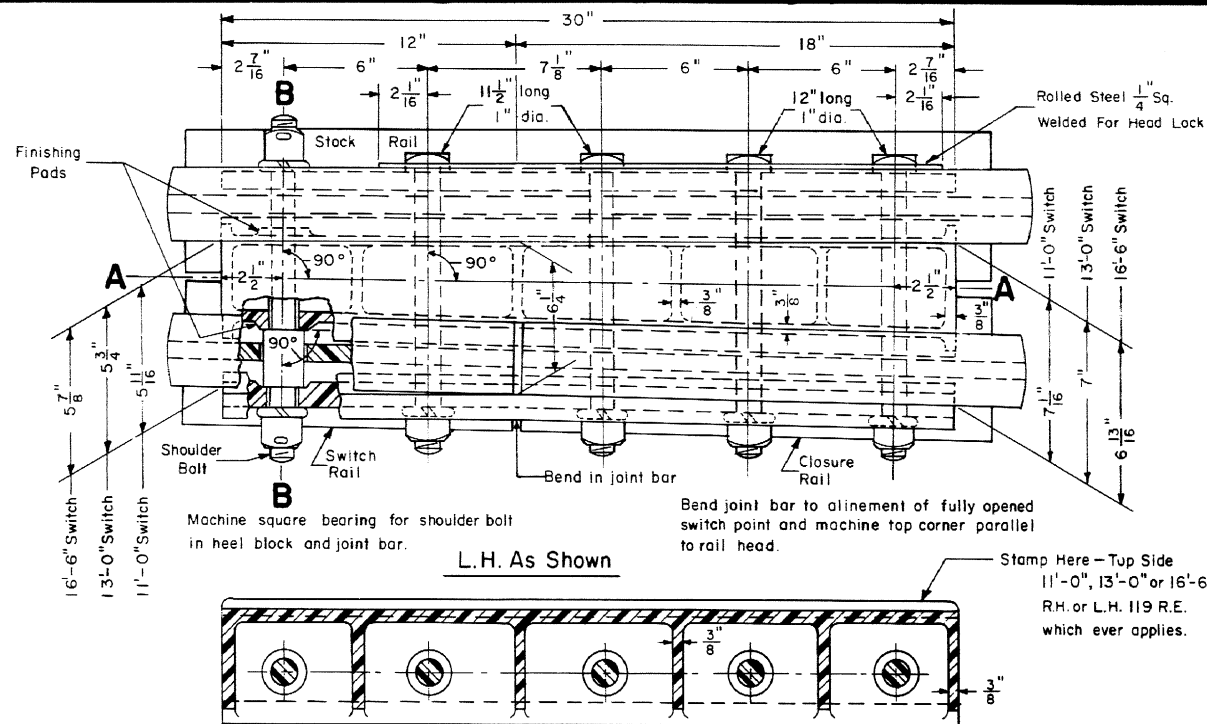
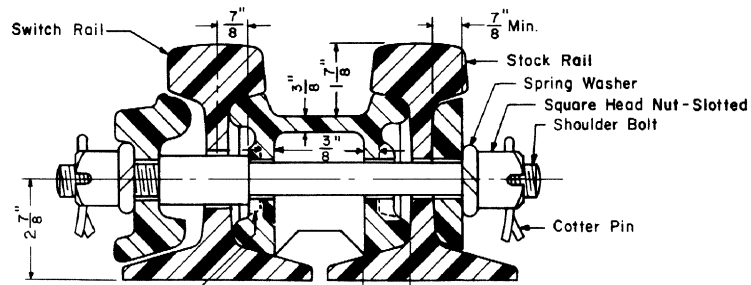


Revisions

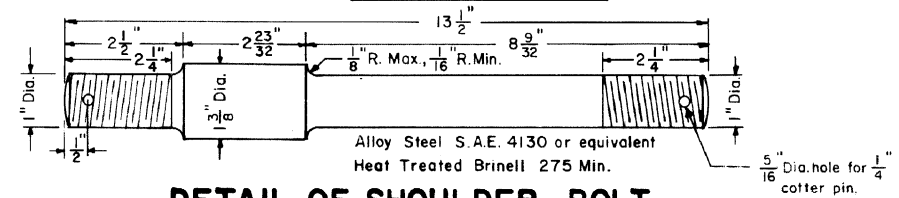
B- May, 1980
 C- Dec., 1981
 D- Dec., 1987



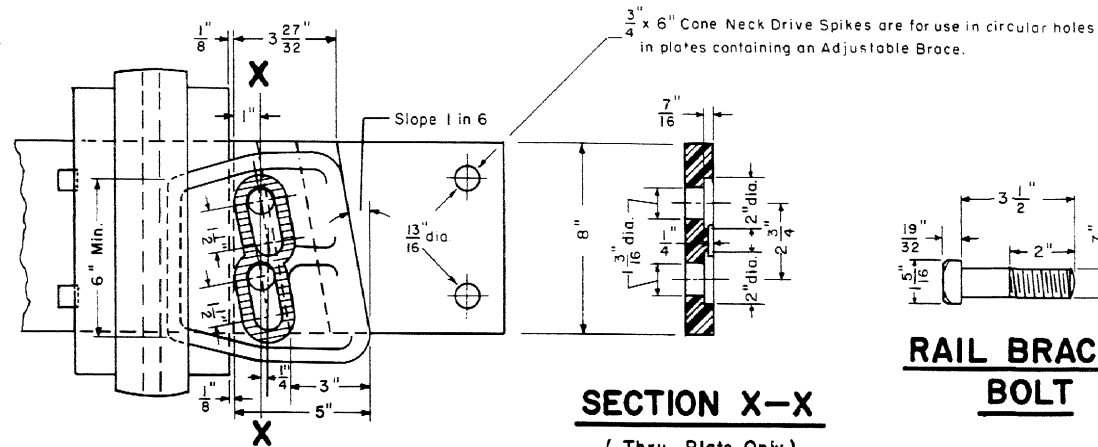
SECTION A-A
HEEL BLOCK ASSEMBLY
 (CAST STEEL, CLASS B, HARD)



SECTION B-B

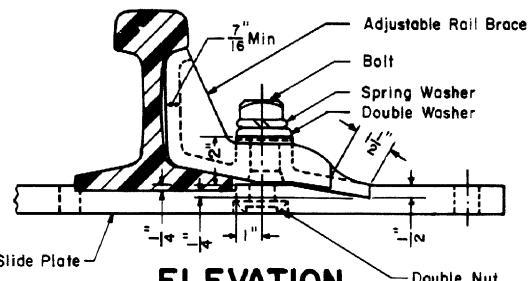


DETAIL OF SHOULDER BOLT

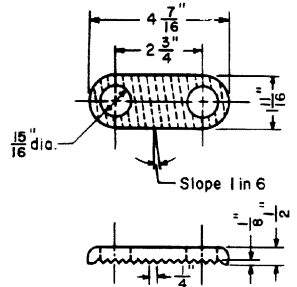


RAIL BRACE BOLT

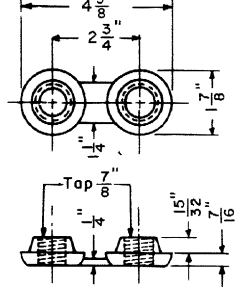
TOP VIEW



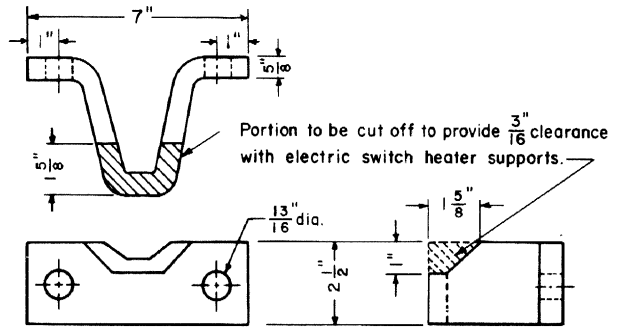
ELEVATION
 (Brace to Fit Under Head and on Top of Base of Rail)
ADJUSTABLE RAIL BRACE, TYPE-A
 (Copper Bearing Mild Steel, Malleable Iron or Cast Steel)



Malleable Iron
DOUBLE WASHER



Forged Steel
DOUBLE NUT



SWITCH RAIL STOP

CONRAIL 73602-D

STANDARD
HEEL BLOCK, ADJUSTABLE RAIL BRACE AND SWITCH RAIL STOP
 FOR 11', 13' or 16'-6" SWITCH WITH 119 R.E. RAIL
 NOVEMBER, 1976

RHSmith Chief Engineer - Maintenance of Way
 Chief Engineering Officer