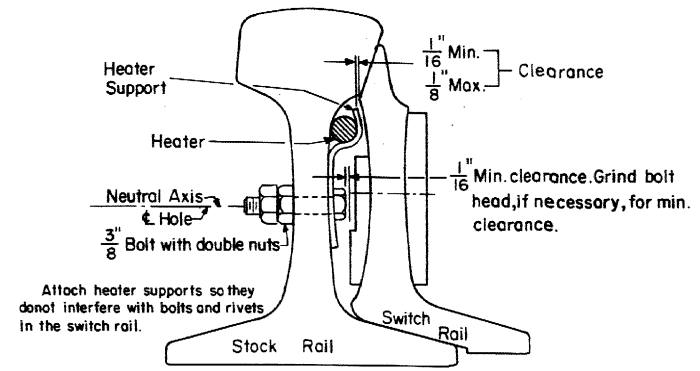
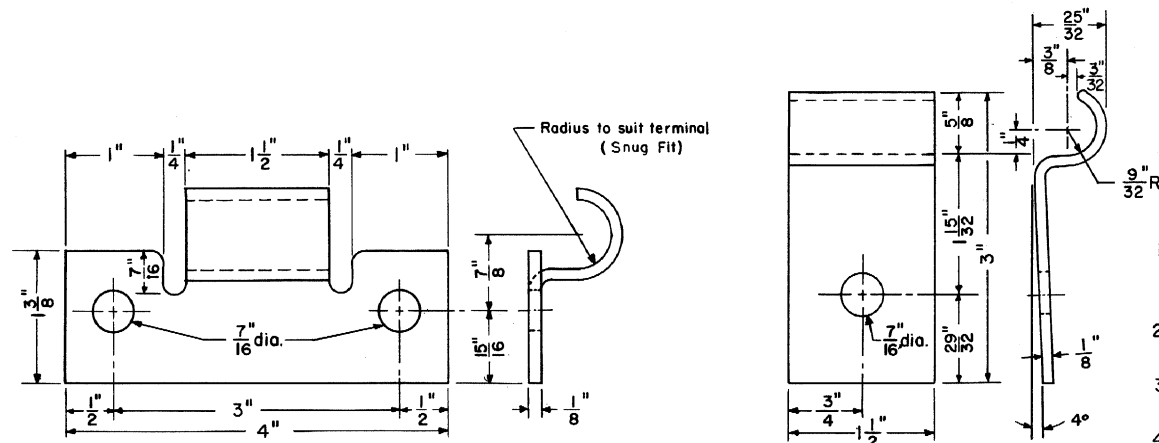


TYPICAL ARRANGEMENT OF SWITCH AND ROD HEATERS



ASSEMBLY OF HEATER SUPPORT



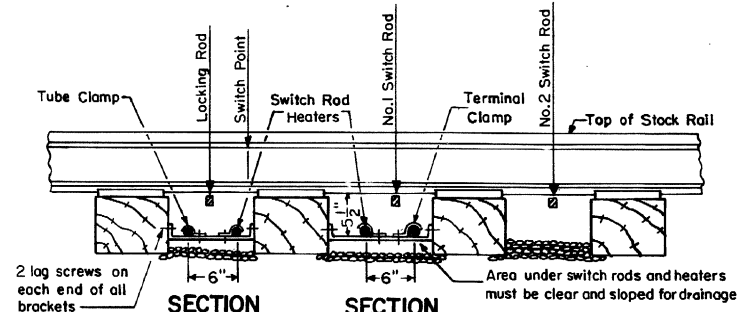
TERMINAL SUPPORT

Supply 2 Bolts With Each For Tubular Switch Heater

Bolts are 3/8" x 2" with 2 nuts and 2 flat washers. See Note No. 2 on sheet 2 of 2 for galvanizing.

HEATER SUPPORT

Supply 1 Bolt With Each For Tubular Switch Heater



SECTION X-X
SECTION Y-Y SIDE VIEW
SWITCH ROD HEATERS

NOTES

- 1- JB-1 cast junction box, 5 1/2" x 4 1/8" W x 2 13/16" D, with 2 couplings for 5/8" I.D. hose and bolt on gasket cover. All on 20" pedestal Raco No. 463-83 or approved equal.
- 2- JB-2 similar to JB-1 except with Raco Type Box 584 and 4 couplings for 5/8" I.D. hose.
- 3- Hose, cold water type, 5/8" I.D. one braid. Account and Reference No. 46-429209.
- 4- Hose clamp- 2 hole steel clamp, Weaver No. 34HW 2 or approved equal.
- 5- Touch up field damaged galvanizing with a cold galvanizing compound, ZRC or Crown Co.
- 6- See sheet 2 of this plan for "Table of Tubular Switch Heater."

CONRAIL **73700-B**
Sheet 1 of 2

STANDARD

ELECTRIC SWITCH HEATERS

FOR NOS. 4, 6, 8, 10, 15, 16, 18 and 20 TURNOUTS

JUNE, 1979

H. Alexander
Chief Engineer - Communications & Signals

R.H. Smith
Chief Engineer - Maintenance of Way

B.S. Carlson
Chief Engineering Officer