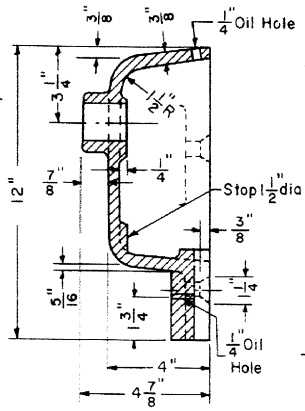
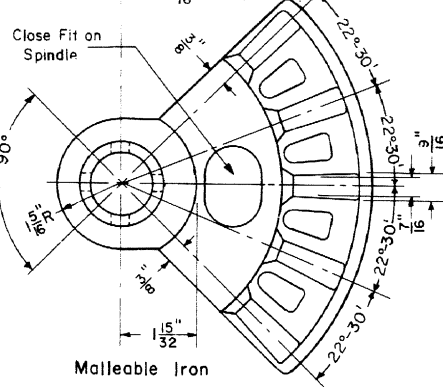
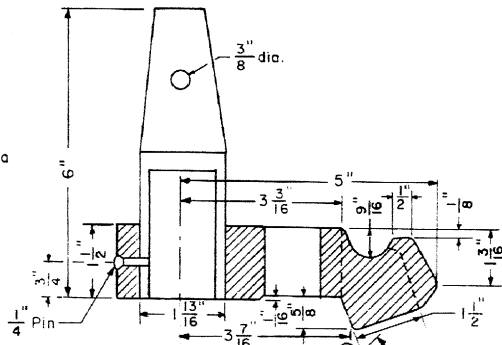


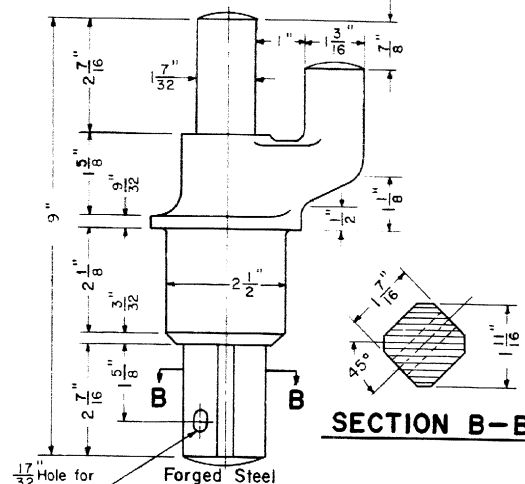
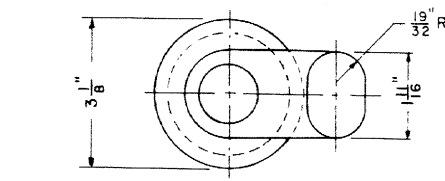
**TOP OF SWITCH STAND-50A**



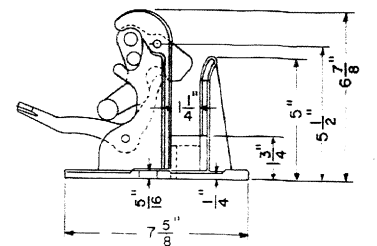
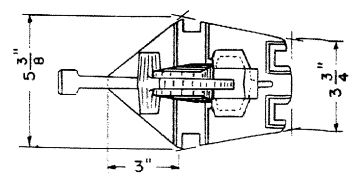
**SECTION A-A**



**SEGMENT GEAR-50A or 50B**



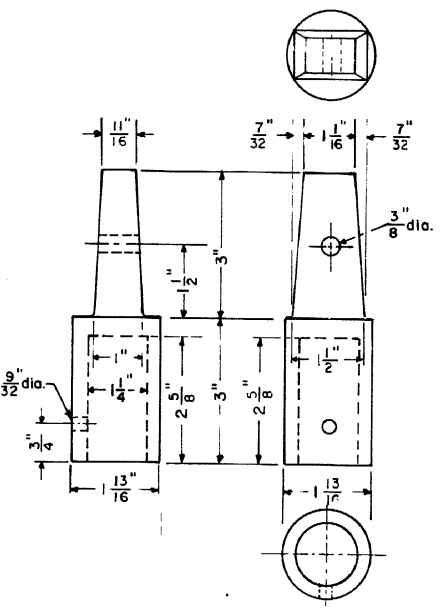
**SPINDLE - 50A or 50B**



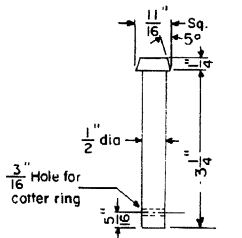
**Malleable Iron LATCH**

**NOTE**

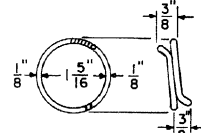
For location of switch stands see M.W. 4, Section 201.4, Paragraphs a1 and a2.



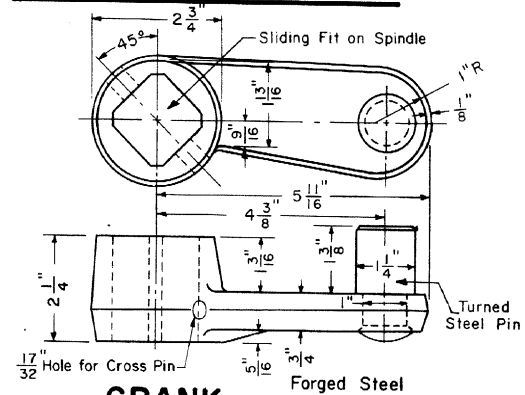
**TARGET SUPPORT-50A**



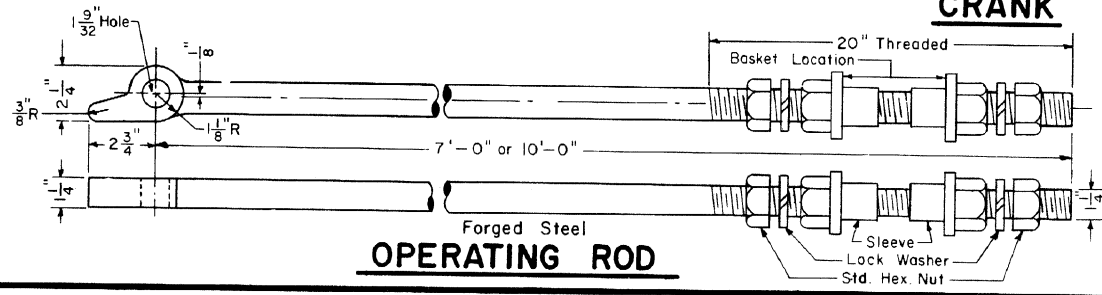
**CROSS PIN**



**COTTER RING**



**CRANK**



**OPERATING ROD**

Supersedes Plan W-1-C

**CONRAIL** **73901-B**  
Sheet 1 of 2

STANDARD  
**NEW CENTURY SWITCH STAND**  
INTERMEDIATE - MODEL 50-B  
AND  
LOW - MODEL 50-A

RHS *Smith* Chief Engineer - Maintenance of Way  
JULY, 1979 *W. J. Gardner* Chief Engineering Officer