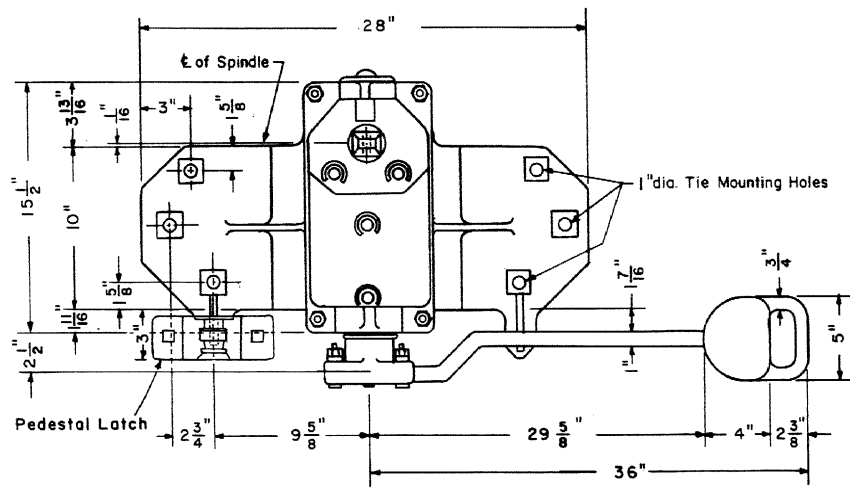
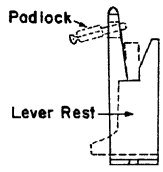


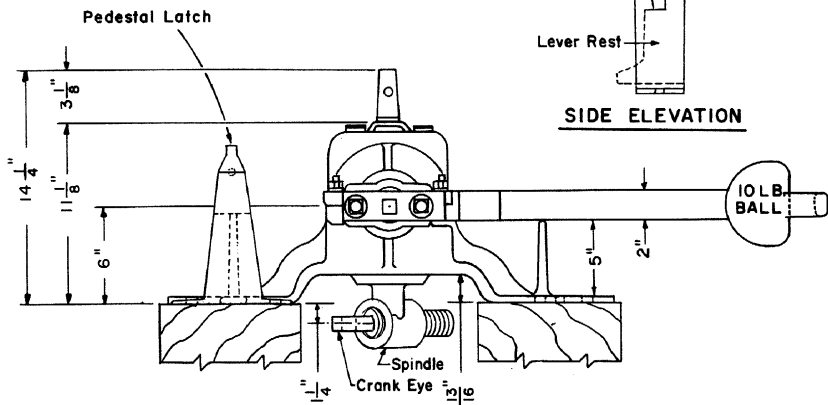
Revisions:  
 B - Oct., 1983  
 C - Nov., 1989  
 D - Feb., 1990



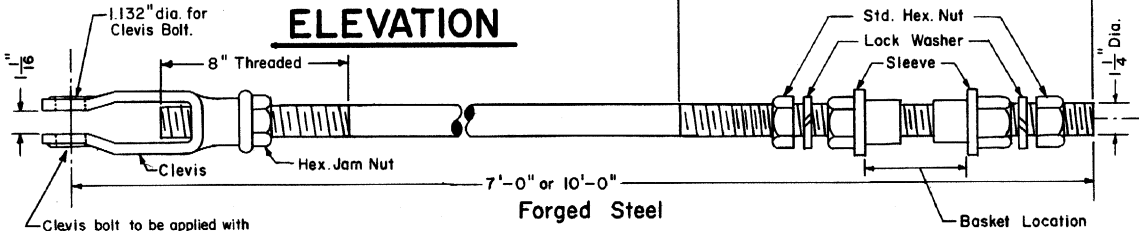
**PLAN** PADLOCK PEDESTAL LATCH  
 (OPTIONAL - 2 Required OI-458023)



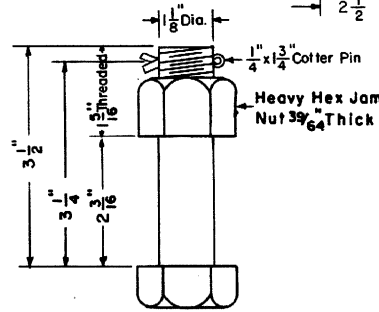
**SIDE ELEVATION**



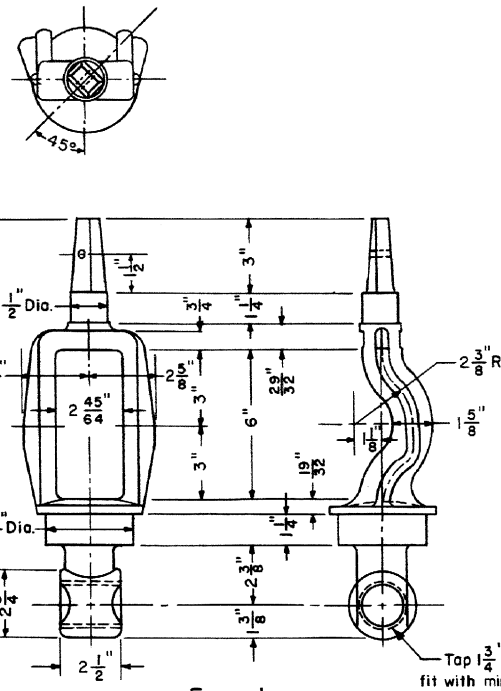
**ELEVATION**



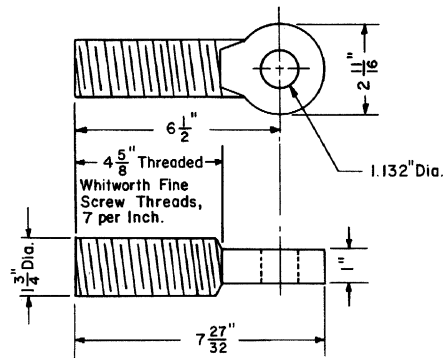
**OPERATING ROD**



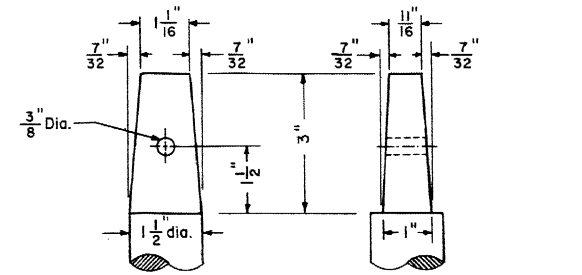
**CLEVIS BOLT**



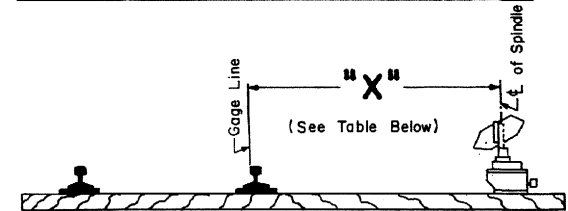
**SPINDLE**



**CRANK EYE**



**TOP OF SPINDLE DETAIL**



TRACK CENTERS		"X" MINIMUM DISTANCE
FROM	LESS THAN	(Gage Line of Near Rail to 1/2 of Spindle)
12'-2"	13'-0"	3'-8 3/4"
13'-0" or More		4'-1"

**NOTE**

For all switch stands, when not located between tracks, the "X" distance shall be a minimum of 4'-1" for Low Masts and 7'-0" for Intermediates.

**SWITCH STAND LOCATION**



73902-D

STANDARD

**AUTOMATIC SWITCH STAND  
 MODEL - 22**

NOVEMBER, 1976

*R.H. Smith*  
 Chief Engineer - Maintenance of Way

*A.C. Gardner*  
 Chief Engineering Officer