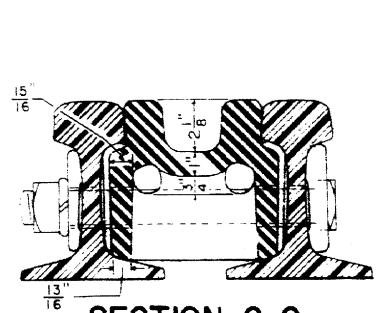


SECTION B-B

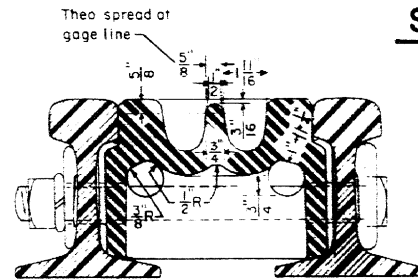
SECTION L-L

SECTION K-K

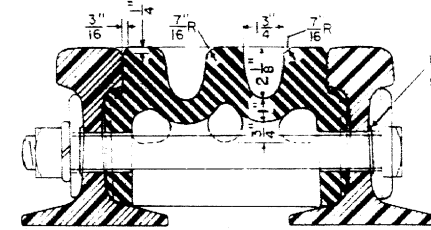
SECTION N-N



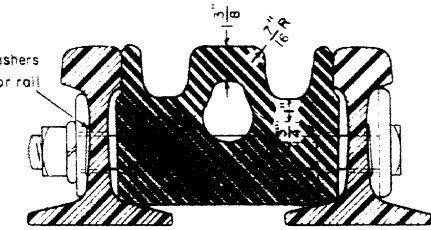
SECTION C-C



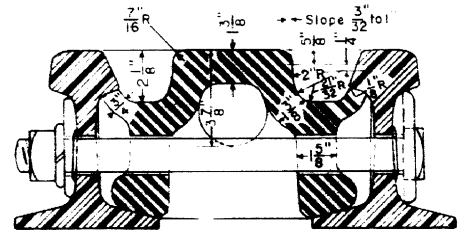
SECTION D-D



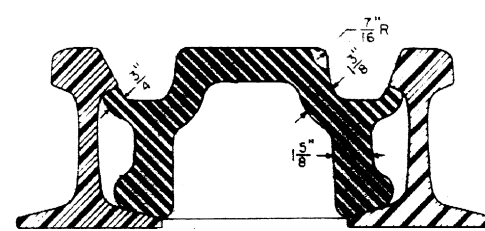
SECTION E-E



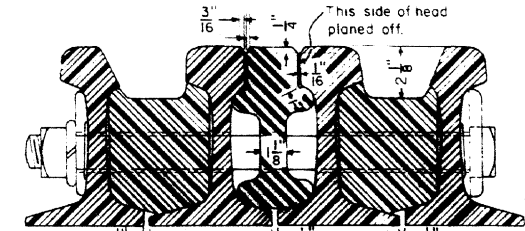
SECTION F-F



SECTION G-G



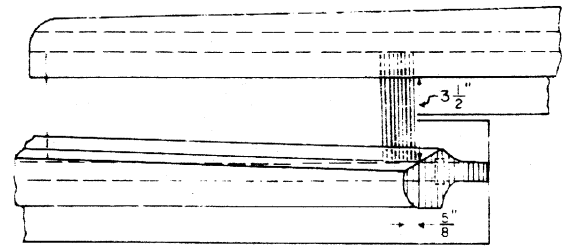
SECTION O-O



SECTION H-H

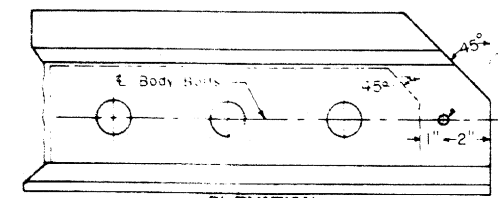
NOTES

- 1 - Bearing surfaces shall be finished to an accurate fit and the bottom bearing of the alloy steel casting, resting on top of the bases of all rails, shall be continuous throughout except at the bends.
- 2 - All bolts and nuts must be carbon steel with medium carbon steel nuts and must conform to current A.R.E.A. "Specifications for Heat-Treated Carbon-Steel Track Bolts."
- 3 - All bolts, except joint bolts and foot-guard bolts, shall be threaded for 4 1/2" with A.S. threads and shall have A.S.A. Regular square heads and square nuts, helical spring washers and suitable washers to provide square bearing under spring washers and where necessary, to bring nuts out from under head of rail so that they may be tightened with a standard wrench. All such bolts shall be fitted with headlocks which shall provide square bearing under the heads of the bolts.
- 4 - Spring washers shall conform to Conrail "Specification for Helical Spring Washers", M.W-6.
- 5 - Arm ends to be beveled, as shown on this plan.
- 6 - The sections and other details shown on this plan are typical for R.B.M. Steel Frogs with 7" Manganese Heel End, of various angles. The sections and details as shown illustrate No. 10 Frog with 140lb. R.E. rail. Other details shall be in accordance with Conrail Plans 74140-(-) and 74141-(-).

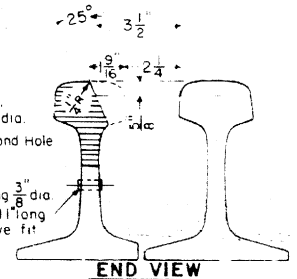


PLAN VIEW

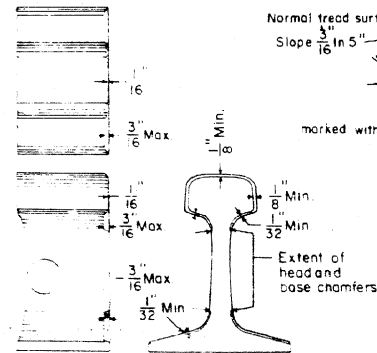
Immediately after bond holes are drilled, a soft steel plug as shown below, shall be driven into each bond hole by manufacturer



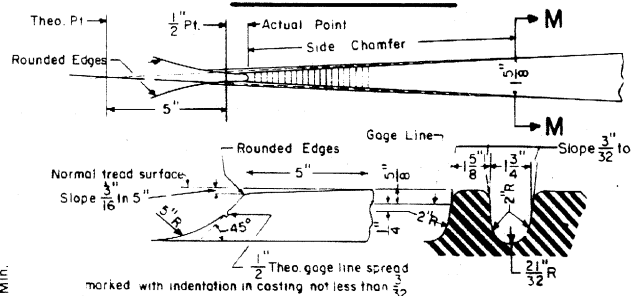
ELEVATION PLANING AT END OF WING RAILS



END VIEW



BEVELING OF ARM ENDS



SECTION M-M
DETAIL OF POINT AND FLANGWAY

CONRAIL 74149-A

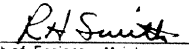
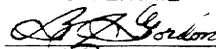
STANDARD

SECTIONS FOR NO.8 AND NO.10

RAILBOUND MANGANESE STEEL FROGS

WITH 7" MANGANESE HEEL END - 140lb. R.E. RAIL

JANUARY, 1977

 Chief Engineer - Maintenance of Way
 Chief Engineering Officer