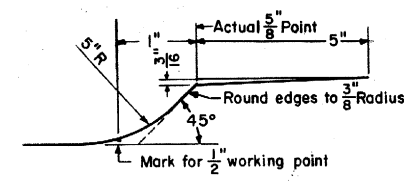
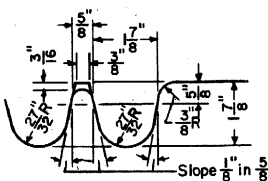
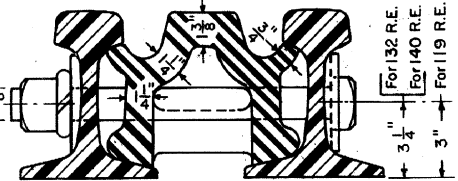
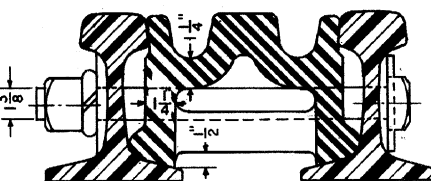
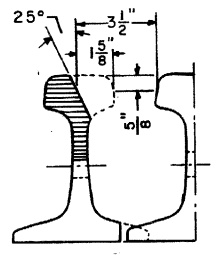
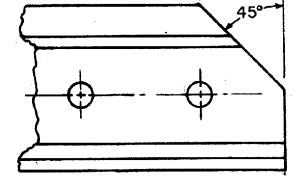
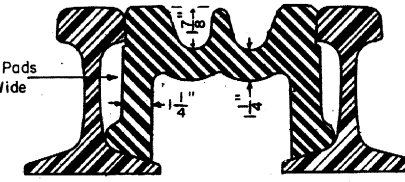
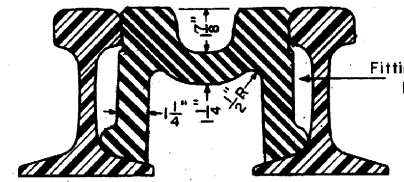
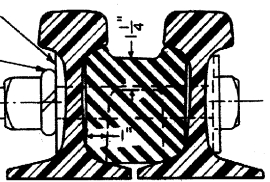
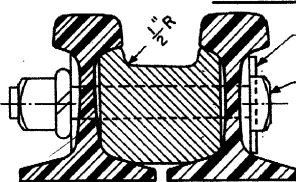
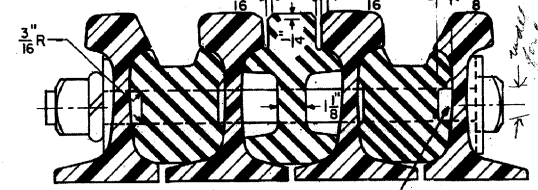
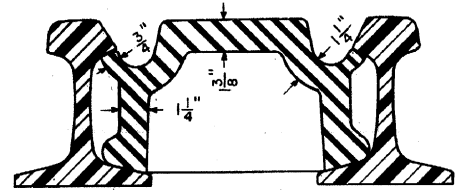


FROG ANGLE = 9°-31'-38"

See C.R. Plan 71008-() For 119Lb. Rail End Drilling
See C.R. Plan 71010-() For 140Lb. Rail End Drilling
See C.R. Plan 71015-() For 132Lb. Rail End Drilling



FROG TIE PLATES REQUIRED	
6 - FT-23	2 - FT-29 Mod.
4 - FT-27	2 - FTR-29 Mod.
2 - FT-27 Mod.	2 - FTR-33 Mod.
2 - FT-29	For details of Frog Tie Plates see C.R. Standard Plan 72105-().



- NOTES**
- This plan is for use with A.R.E.A. recommended standards for 119 or 140lb. rail.
 - Workmanship and materials, including beveling and hardening rail ends, shall be per current "A.R.E.A. Specifications".
 - Groove for bond wire shall extend from end of filler block to the center line of the second bolt hole.
 - All bolts used in construction of frog and switch material shall be dipped immediately before applying (so that all threads are thoroughly coated) in NO-OX-ID "GG" grease, manufactured by Dearborn Chemical Company.

CONRAIL 74150-B

STANDARD

No. 6 RAILBOUND MANGANESE STEEL FROG

FOR 119 LB., 132LB. or 140LB. R.E. RAIL

R.H. Smith JANUARY, 1977

Chief Engineer - Maintenance of Way

Chief Engineering Officer