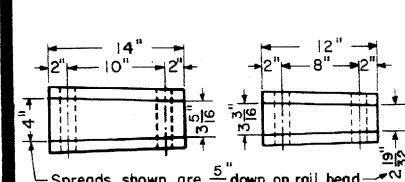
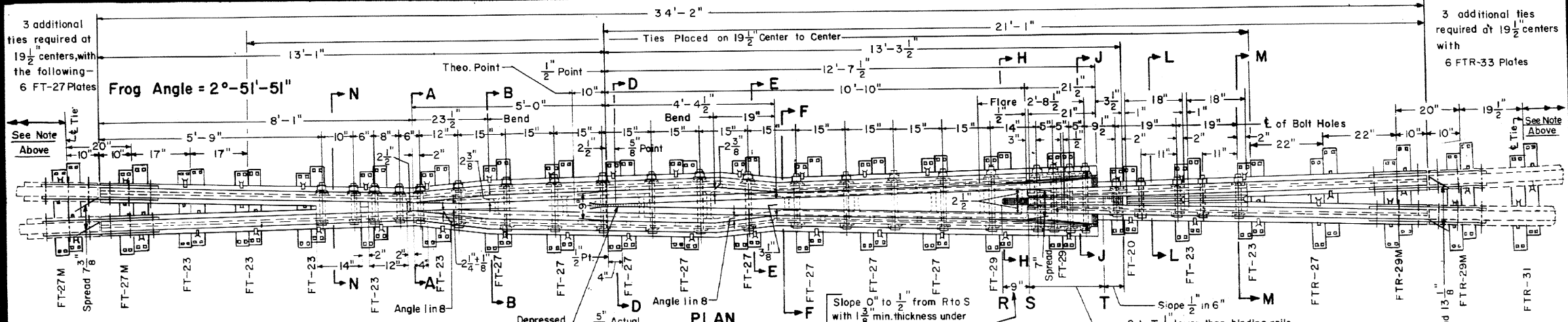
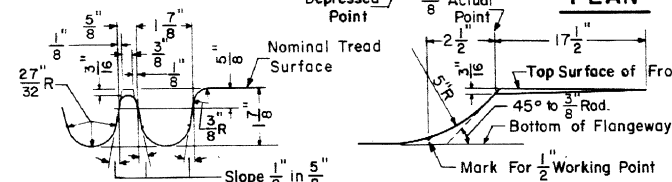


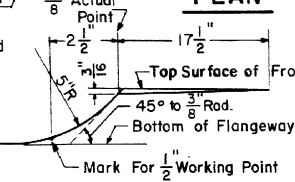
Revisions  
"A" June, 1978



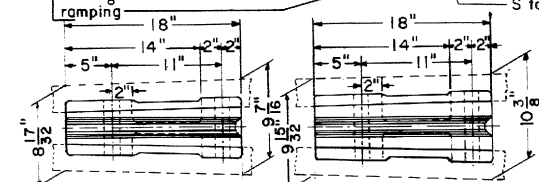
TOE FILLER BLOCKS



SECTION AT POINT



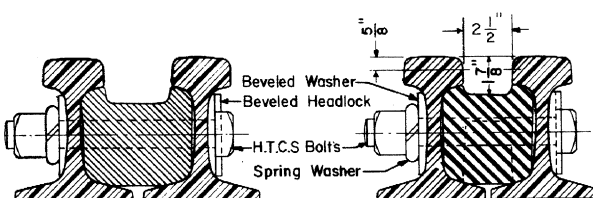
ELEVATION OF POINT



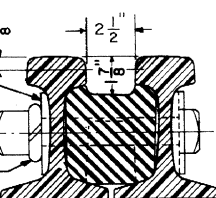
HEEL FILLER BLOCKS

**NOTES**

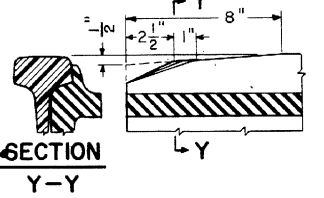
- 1- This plan is for use with A.R.E.A. recommended standards for 140lb. R.E. Rail.
- 2- Workmanship and materials, including beveling and hardening rail ends, shall be per current "A.R.E.A. Specifications".
- 3- Groove for bond wires shall extend from end of filler block at least to center line of second bolt hole.
- 4- All bolts used in construction of frog and switch material shall be dipped immediately before applying (so that all threads are thoroughly coated) in NO-OX-ID "GG" grease, manufactured by The Dearborn Chemical Company.
- 5- When frog is to be used in bolted track first bolt hole to be drilled in field as shown on C.R. Plan 71010.



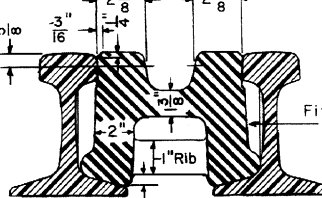
SECTION N-N



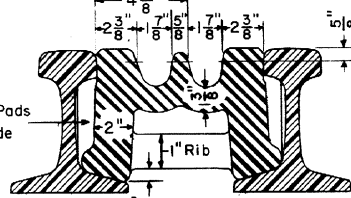
SECTION A-A



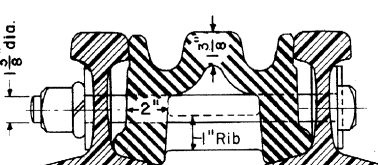
SECTION Y-Y  
END OF MANGANESE



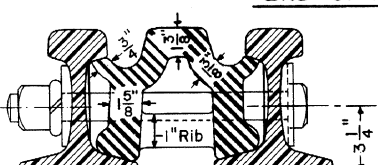
SECTION B-B



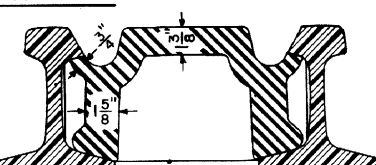
SECTION D-D



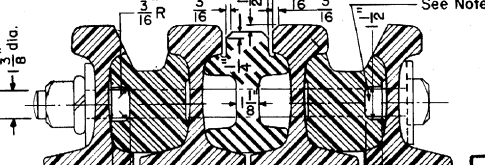
SECTION E-E



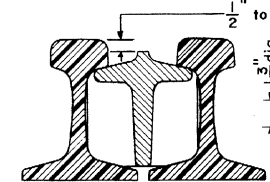
SECTION F-F



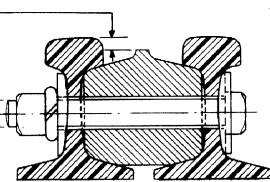
SECTION H-H



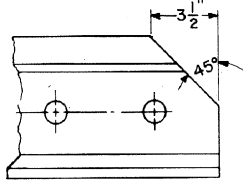
SECTION J-J



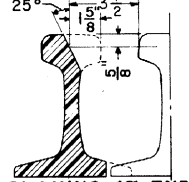
SECTION L-L



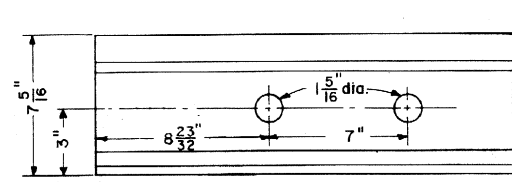
SECTION M-M



BEVELED END OF RAIL



PLANING AT END OF WING RAIL



RAIL DRILLING

**FROG TIE PLATES REQUIRED**

- 2 - FT 20
- 14 - FT 23
- 22 - FT 27
- 4 - FT 27 Modified
- 4 - FT 29
- 2 - FTR 27
- 4 - FTR 29 Modified
- 2 - FTR 31
- 6 - FTR 33

C.R. Plan 72105 ( )

**CONRAIL 74158-B**

STANDARD  
**NO.20 RAILBOUND MANGANESE  
STEEL FROG  
FOR 140LB. R.E. RAIL**  
DECEMBER 1976

*R.H. Smith*  
Chief Engineer - Maintenance of Way

*A.B. Gordon*  
Chief Engineering Officer