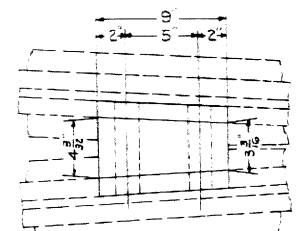
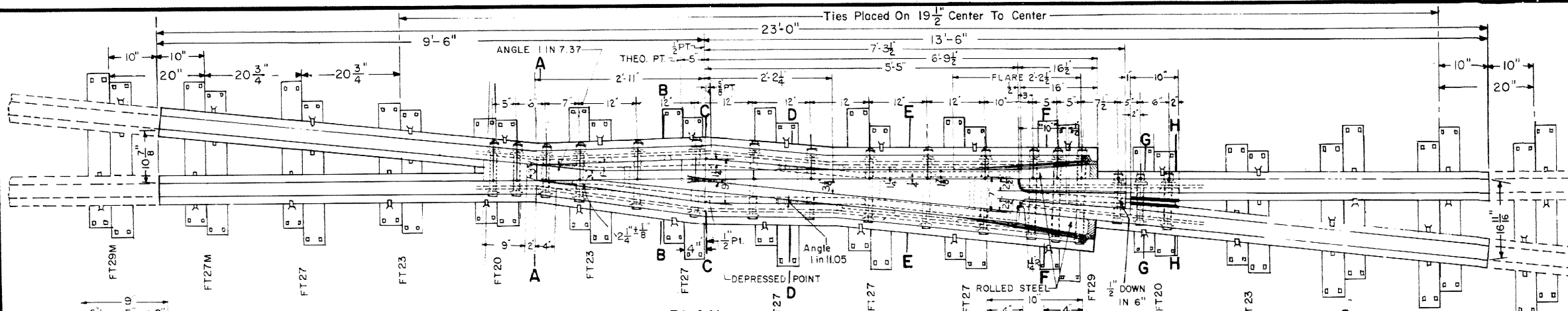
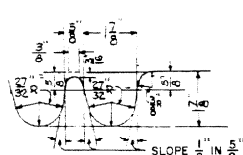


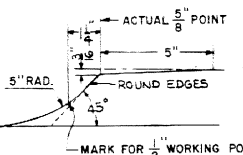
Revisions
 B-June, 1978
 C-Oct., 1980
 D-May, 1986



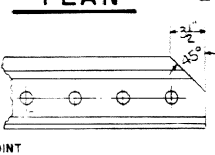
SPREADS SHOWN ARE 5/8" DOWN ON RAIL HEAD
TOE FILLER BLOCK



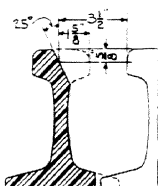
SECTION AT POINT



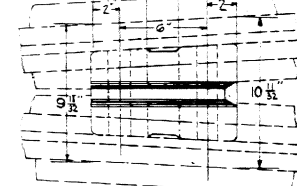
ELEVATION OF POINT



BEVELED END WING RAIL



PLANING AT END OF WING RAIL

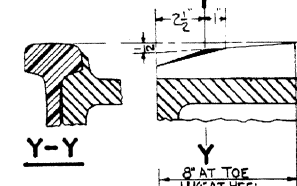


SPREADS SHOWN ARE 5/8" DOWN ON RAIL HEAD
HEEL FILLER BLOCK

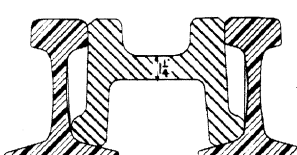
Frog Angle = 5°-43'-29"

NOTES

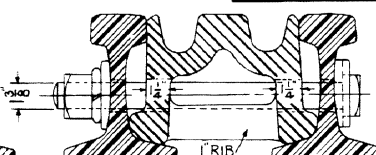
- 1 - This plan is for use with A.R.E.A. recommended standards for 132 R.E. Rail.
- 2 - Workmanship and materials including beveling and hardening of rail ends shall be per current A.R.E.A. "Specifications".
- 3 - Groove for bond wires shall extend from end of filler block at least to the center line of second bolt hole.
- 4 - All bolts used in construction of frog, shall be dipped immediately before applying (so that all threads are thoroughly coated) in NO-OX-ID "GG" grease.
- 5 - When frog is to be used in bolted track, the first bolt hole to be drilled in the field by Conrail as per Plan 71015-(-).
- 6 - Casting to be explosion hardened, with wing and heel rails to be Fully Heat Treated.



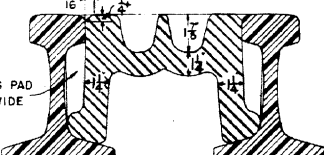
SECTION A-A



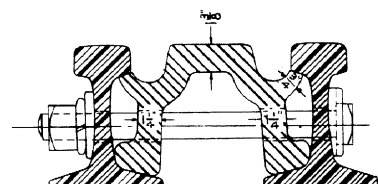
SECTION B-B



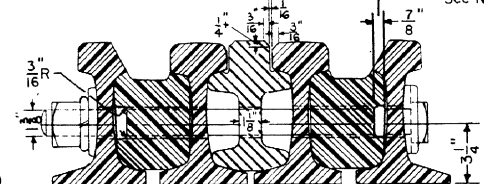
SECTION D-D



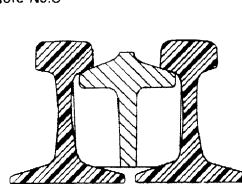
SECTION C-C



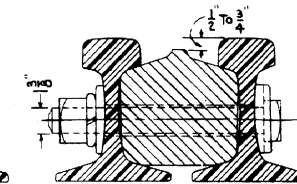
SECTION E-E



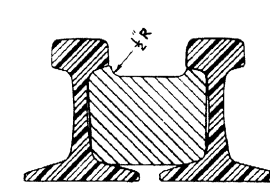
SECTION F-F



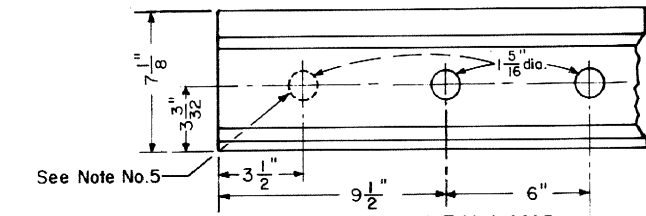
SECTION G-G



SECTION H-H



SECTION J-J



RAIL END DRILLING

FROG TIE PLATES REQUIRED

- 4 - FT 20
- 6 - FT 23
- 10 - FT 27
- 2 - FT 27 Modified
- 2 - FT 29
- 2 - FT 29 Modified
- 2 - FTR 29
- 2 - FTR 31 Modified
- 2 - FTR 33 Modified

C.R. Plan 72105-(-)



STANDARD
No. 10 RAILBOUND MANGANESE
STEEL FROG - 132 R.E. RAIL
 DECEMBER, 1977

R.H. Smith
 Chief Engineer - Maintenance of Way

A.B. Gordon
 Chief Engineering Officer

74161-D