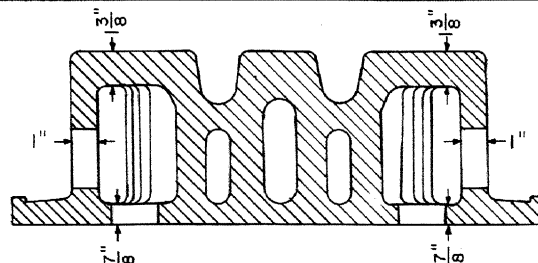
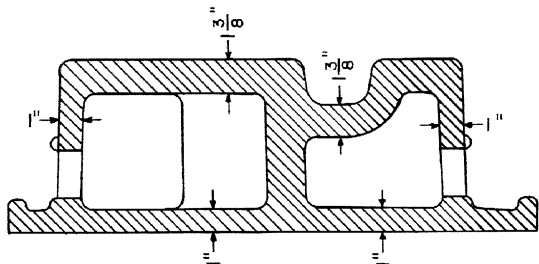


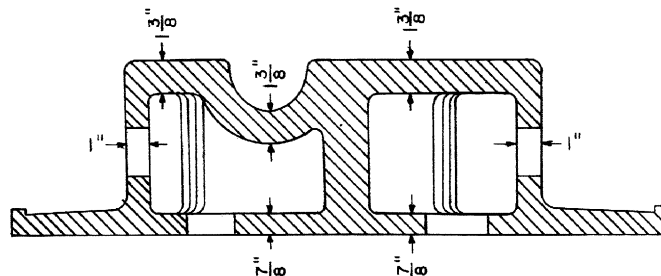
**SECTION Y-Y**



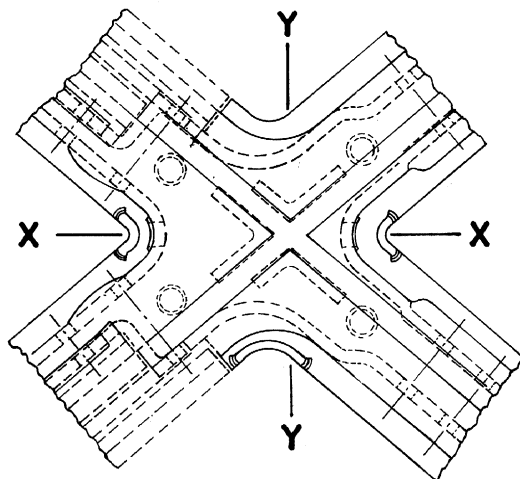
**SECTION Y-Y**



**SECTION X-X**

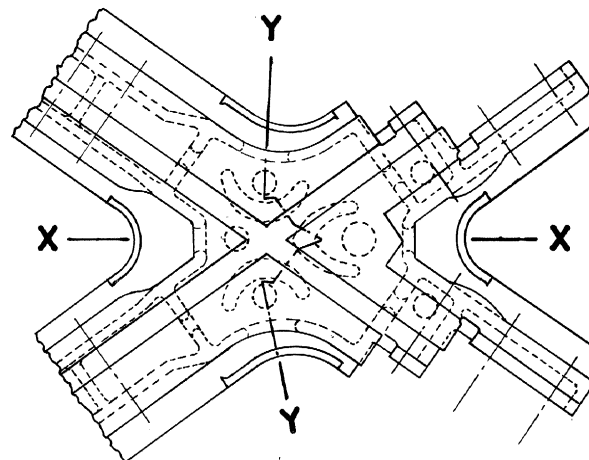


**SECTION X-X**



**PETTIBONE CORPORATION**

(Chicago, Illinois)



**PETTIBONE OHIO**

(Cleveland, Ohio)

**NOTES**

For Construction Specifications and details see AREA plans 771-80, 772-80 or 773-80 modified by Conrail Spec MW 190 (current issue) and the general layout plan furnished by Conrail with the order.

All castings to be Explosion Hardened.

All bolts and nuts shall conform to current AREA Specifications for Special Trackwork—Article 11 with details as per Conrail Plan 71501-0.

All Spring Washers shall conform to current AREA Specifications for Special Trackwork—Article 12.



**74164-A**

Sheet 1 of 2

STANDARD

SOLID MANGANESE STEEL CROSSINGS

WITH REINFORCEMENT UNDER INTERSECTIONS

APRIL, 1985

*J. R. Clark*  
Chief Engineer - Maintenance of Way

*John E. ...*  
Chief Engineering Officer