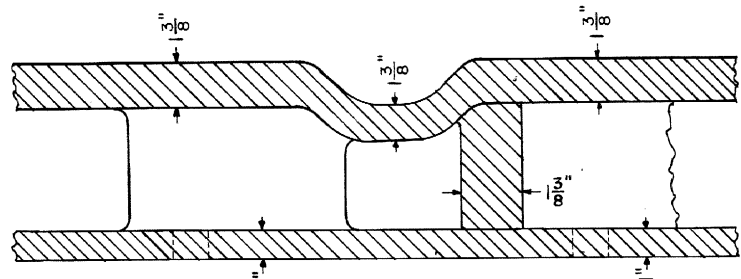
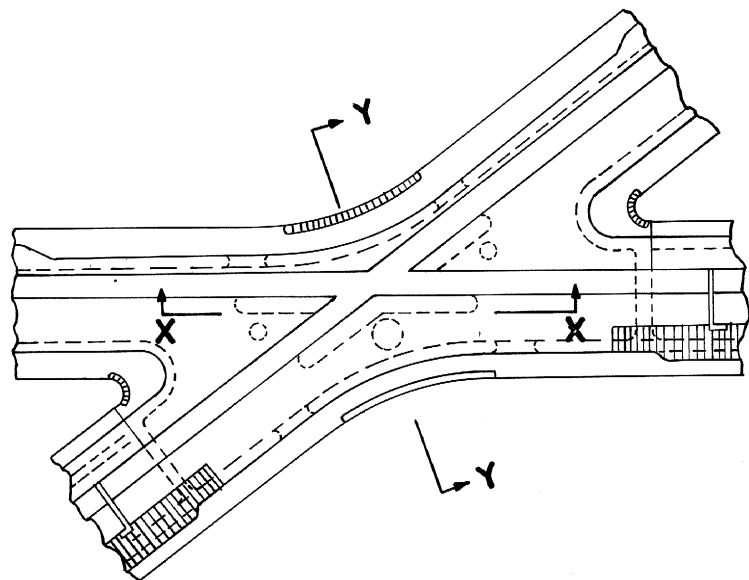


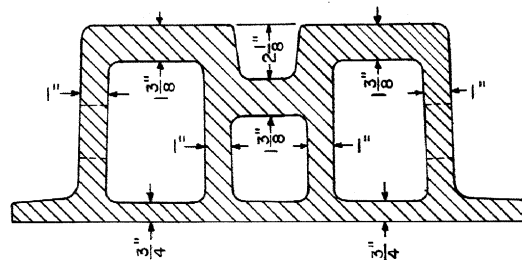
SECTION Y-Y



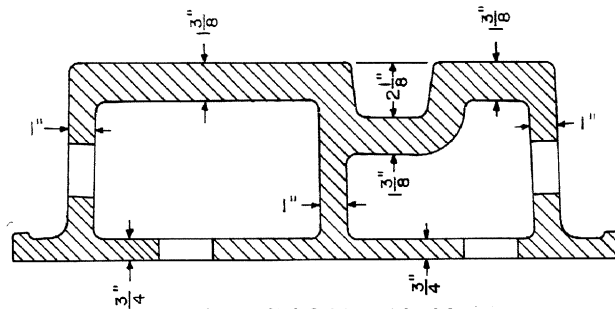
SECTION X-X



BETHLEHEM STEEL CORPORATION

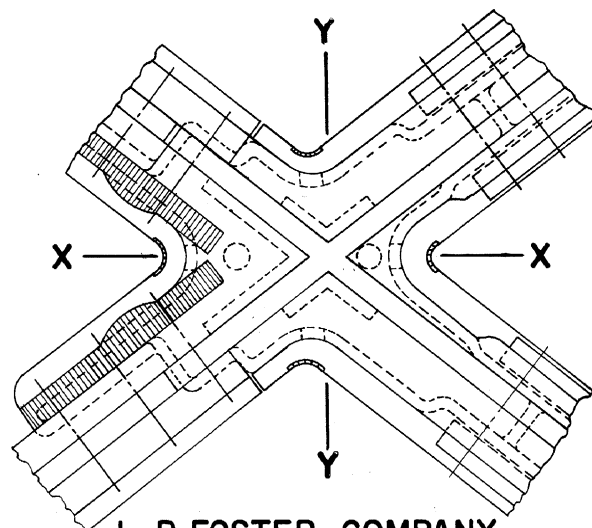


SECTION Y-Y

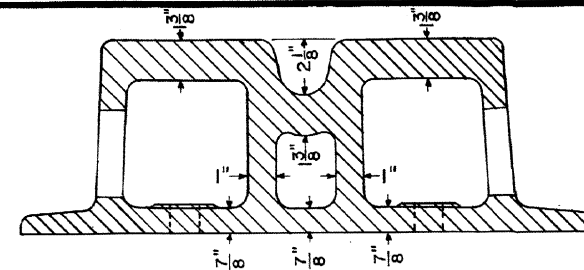


SECTION X-X

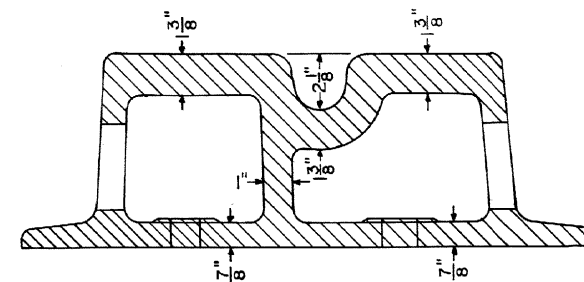
See Sheet No. 1 For Notes



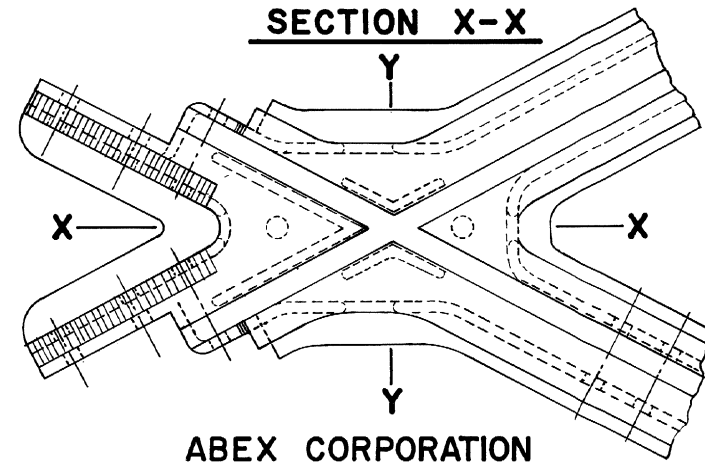
**L. B. FOSTER COMPANY
WEIR-KILBY DIVISION**



SECTION Y-Y



SECTION X-X



ABEX CORPORATION

CONRAIL  **74164-A**
Sheet 2 of 2

STANDARD
SOLID MANGANESE STEEL CROSSINGS
WITH REINFORCEMENT UNDER INTERSECTIONS
APRIL, 1986

J. R. Clark
Chief Engineer - Maintenance of Way

[Signature]
Chief Engineering Officer