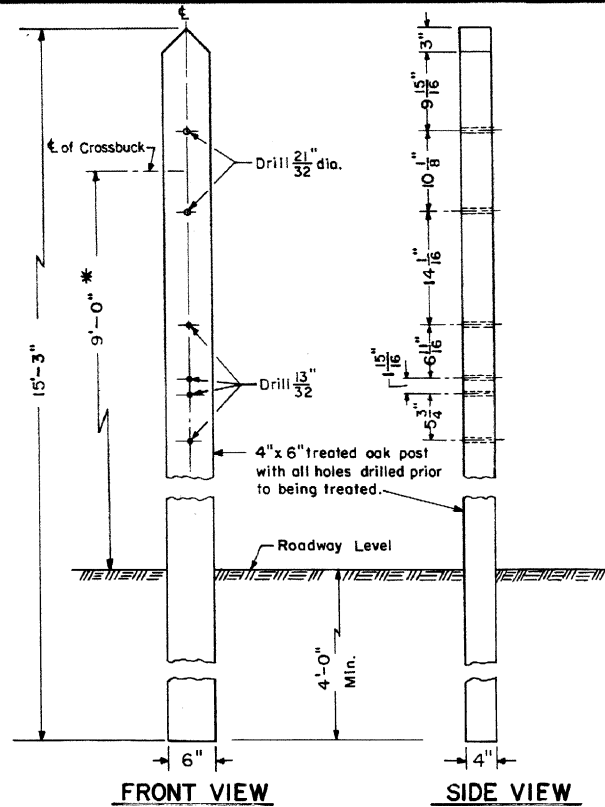
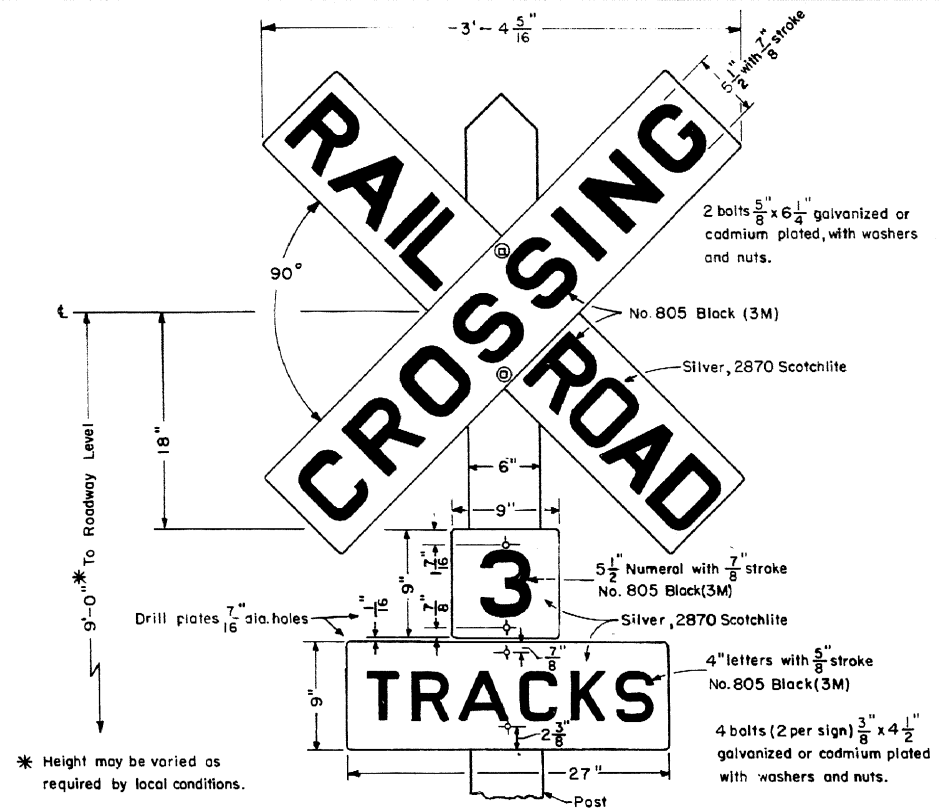


Revisions

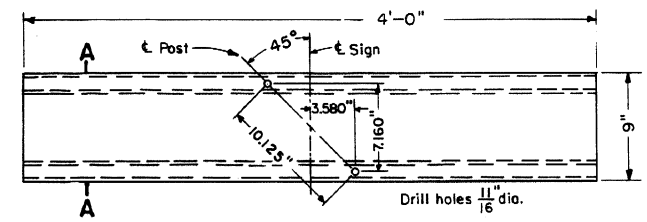
"A" - July, 1981



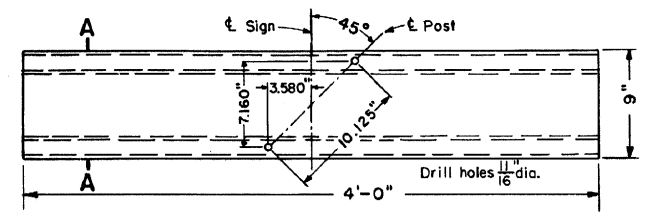
POST
FRONT VIEW SIDE VIEW



CROSSING SIGN ASSEMBLY

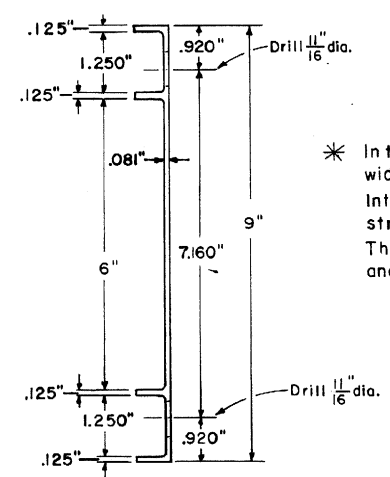


RAILROAD BLADE



CROSSING BLADE

EXTRUDED ALUMINUM BLADES



SECTION A-A

* In the states of Indiana and Illinois a 2" wide silver-white (No. 2870, Silver, High Intensity Grade, Scotchlite) reflective strip is required on the back of each blade. The reflective strip should be centered and run the length of the blade.

NOTES

Highway Crossing Sign for use where automatic signal protection is not required.


Location-The sign shall be erected on the right hand side of the roadway on each approach to the crossing. The center line of the post shall be placed not less than 10'-6" or more than 15'-0" from the center line of the track and 6 feet from the edge of the highway shoulder or 12 feet from the edge of the traveled way in rural areas and 2 feet from the face of the curb in urban areas will usually be attainable. Where unusual conditions demand, variations determined by good judgement should provide the best possible combination of view and safety clearances attainable. The height should be 9'-0" above the roadway level to the center of the crossbuck, but may be varied to suit local conditions.

Crossbuck-The blades shall be 6063-T6 extruded aluminum. The face of the blades shall be covered with No. 2870 Silver, High Intensity Grade, Scotchlite sheeting with No. 805 Black Ink (3M) letters, or equal.

Number of Tracks Sign-The sign to be used where there are two or more tracks. The number displayed on the sign shall be the total number of tracks crossed, including sidings. Normally, where the distance between tracks, measured along the highway, exceeds 100 feet, an additional crossing sign should be erected unless local conditions require otherwise. The sign shall be .081", 6061-T6 aluminum sheet. The face of the signs shall be covered with No. 2870 Silver, High Intensity Grade, Scotchlite sheeting with No. 805 Black Ink (3M) letters, or equal.

Specifications-As per current issue of the Federal Highway Administration, Part VIII-Traffic Control Systems for Railroad Grade Crossings. The letters and numerals as per current A.A.R. Signal Section Plans 1712, 1713 and 1714.

Ordering-Specify sign complete or individual crossbuck, track sign or post, in addition the numeral for the track sign must be specified. Any modifications necessary to comply with legal requirements must be specified.

CONRAIL  **78302-B**

STANDARD

90° HIGHWAY CROSSING SIGN

AUGUST, 1978

R.H. Smith
Chief Engineer - Maintenance of Way

C.B. Gordon
Chief Engineering Officer