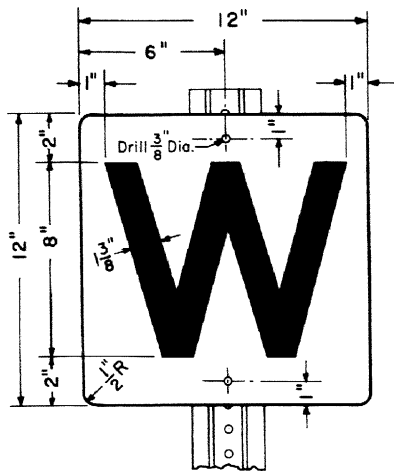


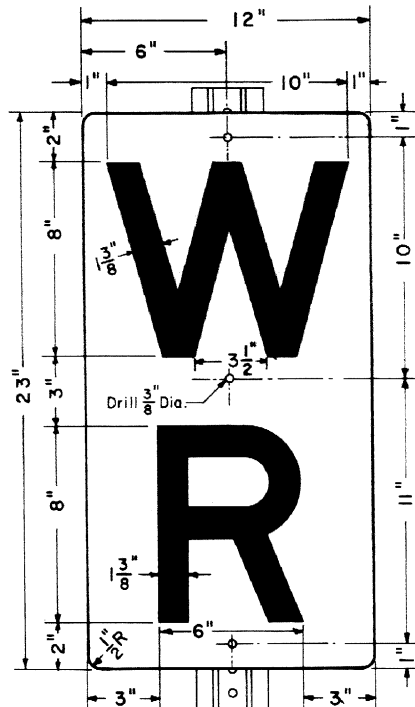
Revisions
 B July, 1982
 C March, 1988
 D May, 1988



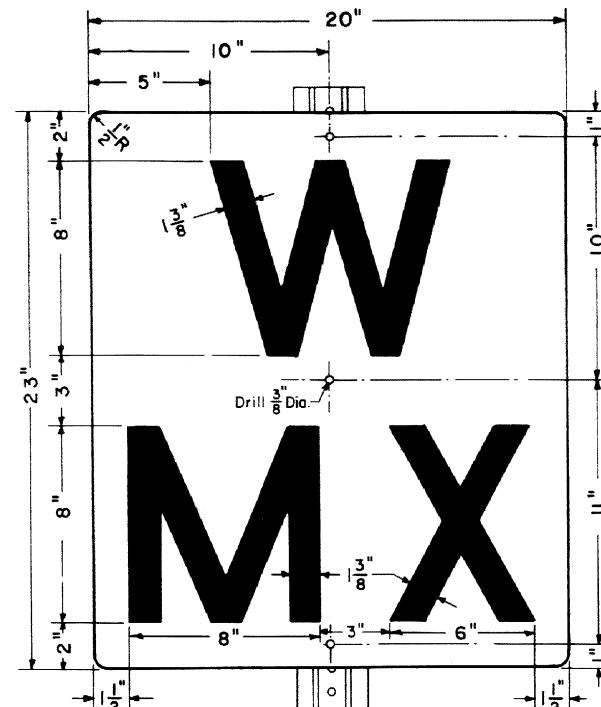
SIGN "A"

TABLE B

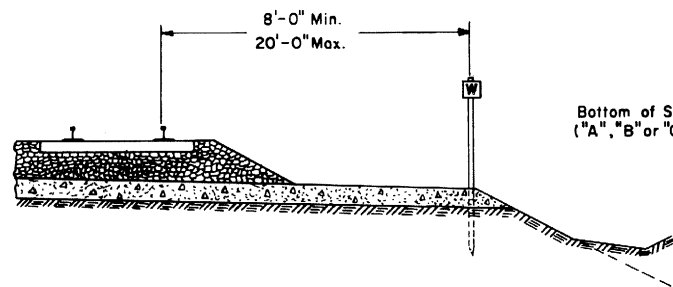
LEGAL REQUIRED DISTANCES FOR WHISTLE SIGNS		
LOCATION	MINIMUM (FT.)	MAXIMUM (FT.)
CANADA	1320	—
DELAWARE	900	—
ILLINOIS	1320	—
INDIANA	1320	—
MARYLAND	—	—
MASSACHUSETTS	1320	—
MICHIGAN	660	—
NEW JERSEY	900	—
NEW YORK	1320	—
OHIO	1320	—
PENNSYLVANIA	—	—
WEST VIRGINIA	990	—



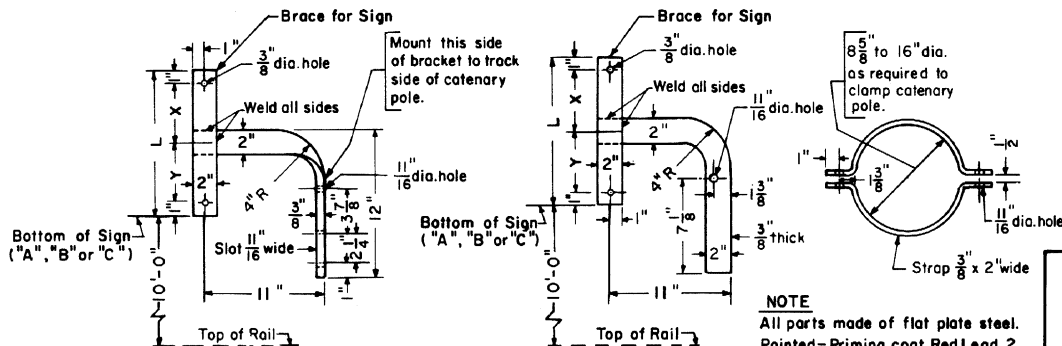
SIGN "B"



SIGN "C"



TYPICAL LOCATION OF WHISTLE SIGNS



TYPE "A"

Bracket For "H", Box and Built-Up Catenary Poles

SIGN	L	X	Y
A	12"	5"	5"
B or C	23"	10"	11"

TYPE "B"

Bracket and Clamp For Tubular Catenary Poles

METHOD FOR ATTACHING WHISTLE SIGNS TO CATENARY POLES

GENERAL NOTES

USE

Sign "A"—Where whistle signal is to be sounded at whistle sign.
 Sign "B"—At designated locations, whistle signal is not to be sounded, except in emergency.
 Sign "C"—At designated locations, whistle signal is to be sounded at whistle sign for multiple crossings and prolonged or repeated until the last crossing is reached.

LOCATION

At crossings with or without automatic protection (flashers or gates and flashers) place whistle signs so that the warning will be sounded 25 seconds before the engine reaches the crossing (See Table A), but not less than 1200 feet, unless greater minimum distance is specified by local ordinance or legal requirements in Table B.
 Sign shall be located on the right hand side of single track or outside track of multiple track lines approaching crossing in the assigned direction of traffic, as near as practicable to the field side of the roadbed shoulder not less than 8'-0" nor more than 20'-0" from the gage of the near rail.
 In multiple track territories, where one or both outside tracks are signalled for operation in both directions, additional sign may be placed opposite prescribed sign on left hand side of tracks, subject to approval of the Chief Engineer—M.W. upon written request over the signature of the General Manager.
 Multiple whistle signs must be used in areas where the distance between crossings is less than the minimum distance as stated above.

CONSTRUCTION

Signs shall be of 0.081"-6061-T6 aluminum sheet with one side covered with No. 2870 Wide Angle Silver Flat Top Scotchlite and No. 605 Black Scotchal letters or equivalent.
 Signs shall be mounted on 9'-6" post with anchor plate in accordance with Plan 78480-1).
 In overhead electrified territory, whistle signs shall be mounted on catenary poles with brackets as shown.

TABLE A

TRAIN SPEEDS MPH	DISTANCE (FT.) 25 SEC. WARNING
80	2925
70	2700
60	2200
50	1840
40	1475
30 OR LESS	MINIMUM 1200

CONRAIL  **78410-D**
 STANDARD

WHISTLE SIGNS

SEPTEMBER, 1978

R.H. Smith
 Chief Engineer—Maintenance of Way

A.P. Gordon
 Chief Engineering Officer