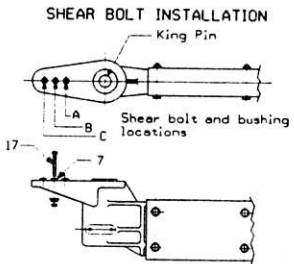
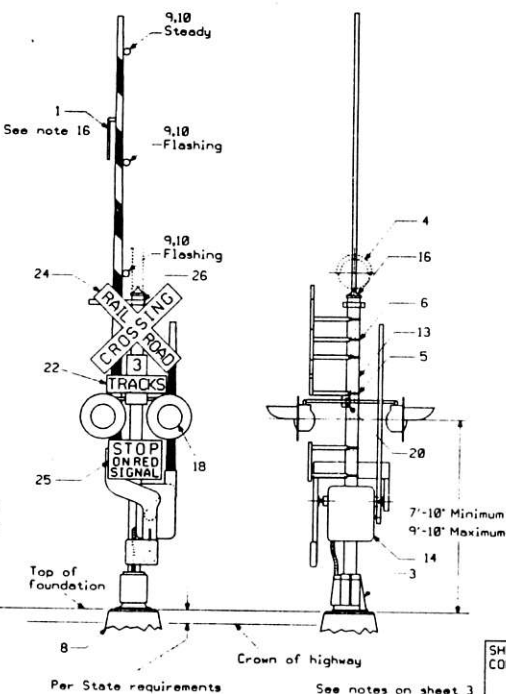
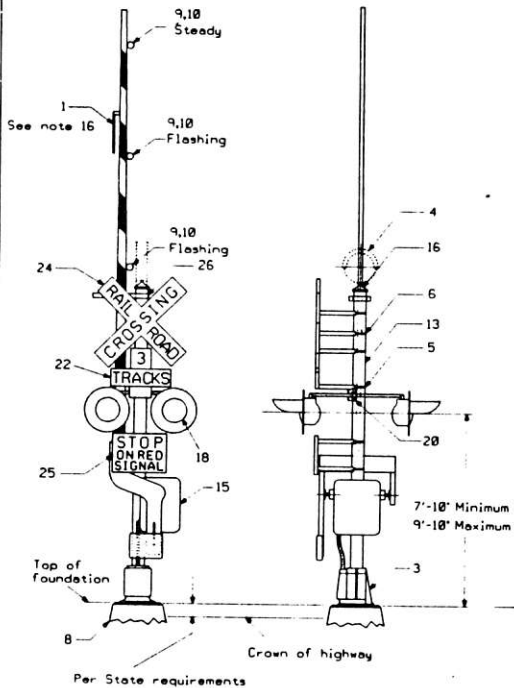
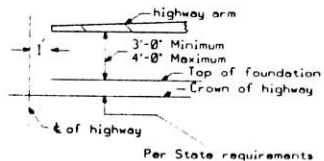


Rev. A-6-14-1987 Added
 Per State requirements
 note to sheets 132.
 Note 7 schedule 48 page
 see schedule 98.



ARM LENGTHS
 up to and including 18', two shear bolts at locations A and B
 19' through 24', two shear bolts at locations B and C
 24' and longer, three shear bolts at locations A, B AND C
 DO NOT OVERTIGHTEN



| REV | DATE | BY |
|-----|------|----|
| | | |
| | | |
| | | |
| | | |
| | | |
| | | |
| | | |
| | | |
| | | |

ONE CAR

SHEET 1
 CONT ON SH 2 **CONRAIL** CS-1001-A

STANDARD
 AUTOMATIC CROSSING GATE
 AND SIGNAL ASSEMBLY

Approved *[Signature]* Chief Engineer CES
[Signature] Chief Engineering Officer

ISSUE DATE: June 14, 1987

REV. Aug 7, 1987