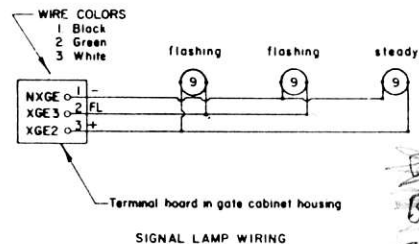
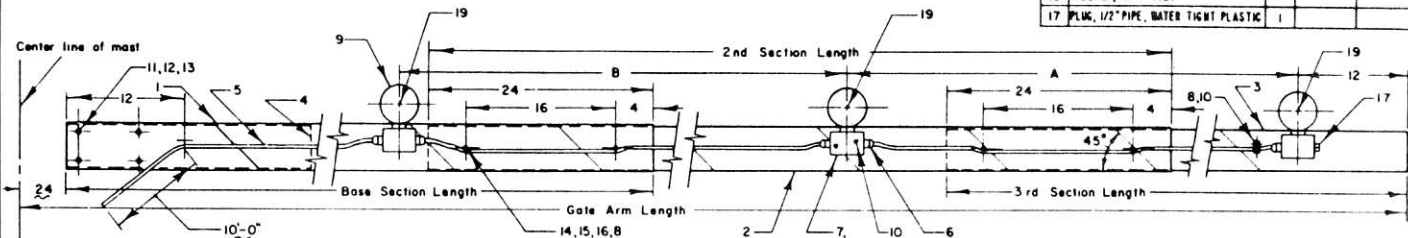


GATE ARM LENGTH	BASE SECTION LENGTH	2ND SECTION LENGTH	SLEEVE LENGTH	ACCT. NO.	GATE ARM LENGTH	BASE SECTION LENGTH	2ND SECTION LENGTH	3RD SECTION LENGTH	SLEEVE LENGTH	ACCT. NO.
13'-0"	11'-0"		4'-0"	*	27'-0"	16'-0"	11'-0"		8'-0"	*
14'-0"	12'-0"		4'-0"	02-014676	28'-0"	16'-0"	12'-0"		8'-0"	02-012639
15'-0"	13'-0"		4'-0"	*	29'-0"	16'-0"	10'-0"	5'-0"	8'-0"	*
16'-0"	14'-0"		4'-0"	02-012514	30'-0"	16'-0"	10'-0"	6'-0"	8'-0"	02-012829
17'-0"	15'-0"		4'-0"	*	31'-0"	16'-0"	10'-0"	7'-0"	8'-0"	*
18'-0"	16'-0"		4'-0"	02-012522	32'-0"	16'-0"	10'-0"	8'-0"	8'-0"	02-012613
19'-0"	15'-0"	4'-0"	4'-0"	*	33'-0"	16'-0"	10'-0"	9'-0"	8'-0"	*
20'-0"	16'-0"	4'-0"	4'-0"	02-012548	34'-0"	16'-0"	10'-0"	10'-0"	8'-0"	02-012645
21'-0"	16'-0"	5'-0"	4'-0"	*	35'-0"	16'-0"	12'-0"	9'-0"	8'-0"	*
22'-0"	16'-0"	6'-0"	4'-0"	02-014718	36'-0"	16'-0"	12'-0"	10'-0"	8'-0"	02-012860
23'-0"	16'-0"	7'-0"	8'-0"	*	37'-0"	16'-0"	12'-0"	11'-0"	8'-0"	*
24'-0"	16'-0"	8'-0"	8'-0"	02-012563	38'-0"	16'-0"	12'-0"	12'-0"	8'-0"	02-012886
25'-0"	16'-0"	9'-0"	8'-0"	*						
26'-0"	16'-0"	10'-0"	8'-0"	02-012589						

* - Cut from next larger assembly.



NOTES:

- Fiberglass reinforced polyglass to be made by pultrusion process & have a smooth surface finish. White color to be impregnated. Longitudinal tensile strength to be no less than 30,000 P.S.I. and transverse tensile strength to be no less than 7,000 P.S.I. per ASTM D-638. Density to be 0.063 to 0.065 lbs per cu in. Twist to be less than 1/2" per ft. not to exceed 5" total for 16' section. Bow not to exceed 5/8" per 16' section.
- Gate order numbers shown above are complete assemblies. See sheets 3 B 4 for section replacement order numbers.
- Gate light terminal boxes to be watertight.
- Anodized coating thickness to be Exterior Commercial standard. No. 1 which is 0.000225" to 0.000275".
- Apply alternate red & white engineering grade reflex reflective sheeting to each side of gate arm at 16' intervals starting at base. Sheeting not required 2'-0" from butt end, except for base section. See sheet 4.
- Cable straps, item 8, to be installed on 16' centers & with diam M4. Use No. 28 drill for holes for No. 8 sheet metal screws, item 10.
- All hardware to be cadmium plated.

ITEM	NAME	REQ	REF	ACCT NO
1	Base section	1	See sh 3	
2	Second section		See sh 3	
3	Third section		See sh 3	
4	Sleeve	1	See sh 3	
5	Cable, 3 cond'r., AWG 16, 300Ω, SJO			49-190105
6	Connector, cable, 1/2" hub	5		49-254418
7	Box, terminal	3	1003-1	
8	Strap, cable		1003-28	
9	Light assembly, 4", with term. box	3		02-286365
10	SCREW, SNEE METAL, NO 8 X 1/4 LG TYP			
11	Bolt, 3/8"-16 X 2-3/4 hex hd			
12	Locknut, 3/8"-16 hex			
13	Washer, 3/8" flat			
14	Bolt, 1/4"-20 X 2-3/4 hex hd			
15	Locknut, 1/4"-20 hex			
16	Washer, 1/4" flat			
17	PLUG, 1/2" PIPE, WATER TIGHT PLASTIC	1		

18	LAMP TERM. BOX ASSY W/2 COND CONNECTERS & MTC SCREWS, ITEMS 6, 7, 9, 10			02-265385
19	Lamp, 10V-18W	3	4000-3	49-407453

8 Light location dimensions A & B to be determined from field location conditions.
9 Item 18 shown for maintenance purposes only
10. Gate arms to be furnished less lamps

SHEET 1
CONT'D ON SH 2

CONRAIL

STANDARD
GATE ARM

OCT 18, 1985

Approved: *[Signature]*
Chief Engineer C&E

Rev. 02-23-85

13

WAC
B AB-1
G