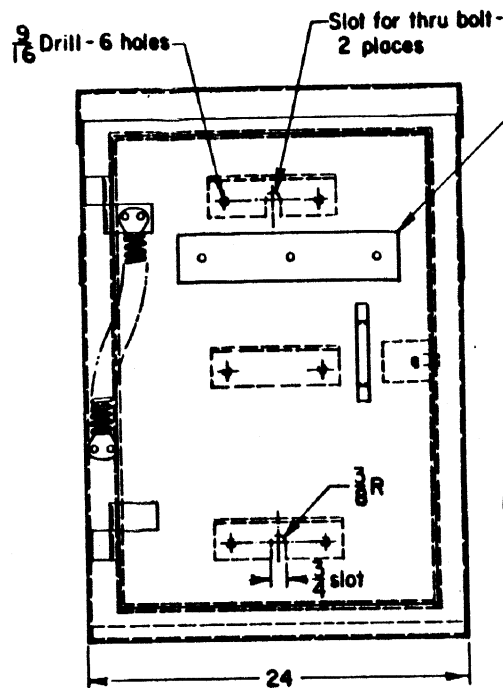


MARKER
 Make from 0.081" 6061-T6
 Alum. alloy with Scotchlite yellow
 reflective material - engineer
 grade - bonded to plate. 3 req'd.
 per box.

NOTES:

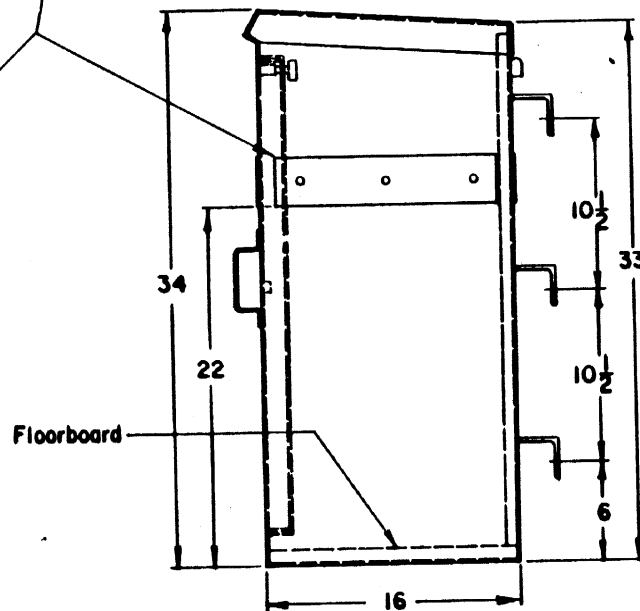
1. Box to be fabricated from No. 12 gage (0.104") Corten steel, and to be degreased.
2. Inside of box to be painted with a prime coat, and a finish gray coat. *
3. Install 3/4" thick plywood backboard and floorboard. Varnish both sides of each board before installation
4. Door to be provided with a gasket to insure that box will be weatherproof.
5. Door to be equipped with a spring loaded, vandal-resistant lock, and shall be arranged to be operated by a standard Conrail switch key.
6. Door to be provided with a spring to return the door to its closed position.
7. Provide and install a two-pole single throw switch to be door operated, and in the closed position when the door is closed.
8. Provide cable entrance, and grounding lug.
9. Rivet yellow reflective markers to box.
 * Fire retardant grey paint Ord. Ref. 47-643954, Albie Cote 107A or approved equal.

PLAN VIEW



FRONT ELEVATION

Fasten a marker to the door and each side of box with 3/16 Dia. aluminum rivets.



SIDE ELEVATION

SHEET 1

CONRAIL
 STANDARD
TELEPHONE BOX

CS-2005-A

APR 23, 1980

Approved *E. J. Alexander*
 Chief Engineer C&S