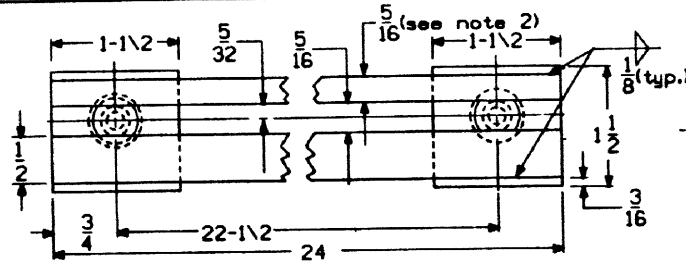
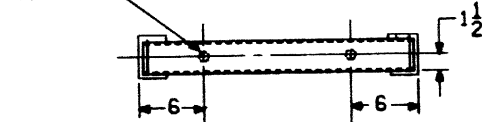
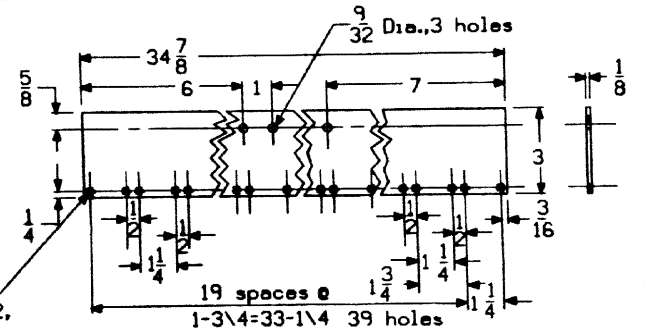
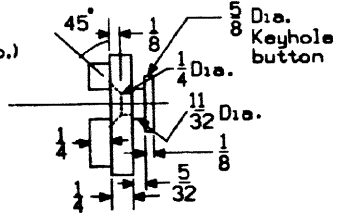


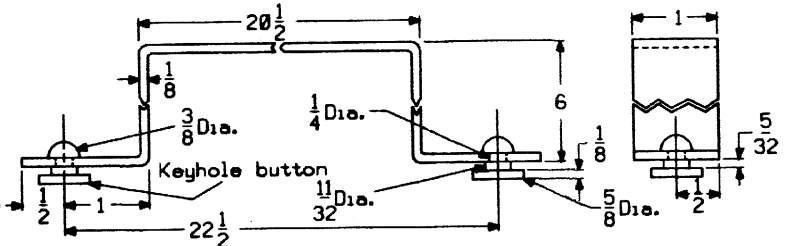
13/32 Dia. 2 holes, bottom channel only



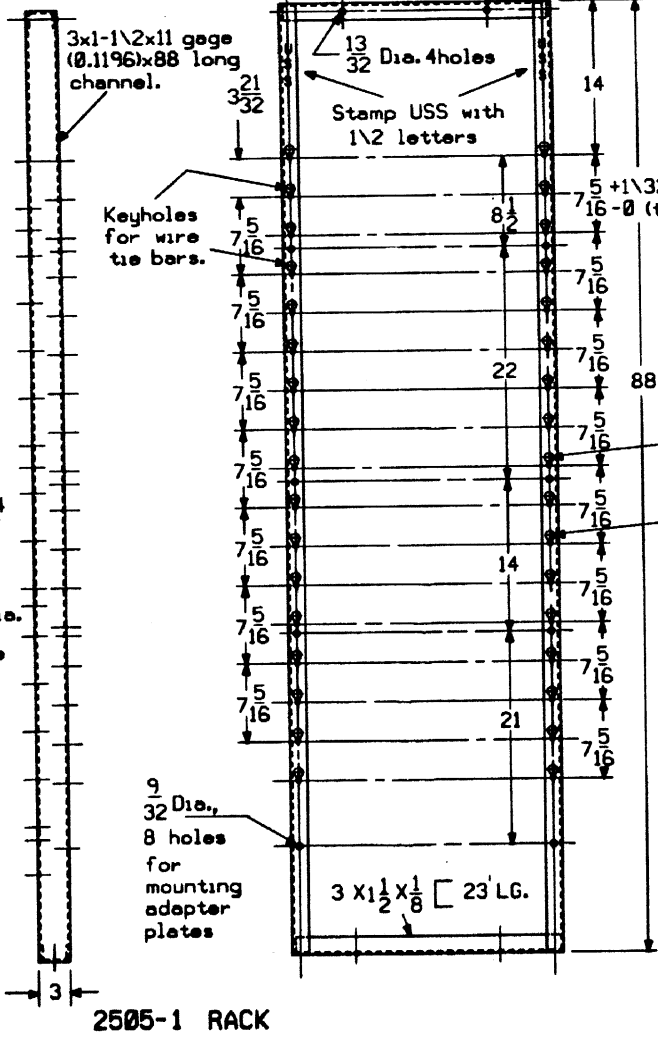
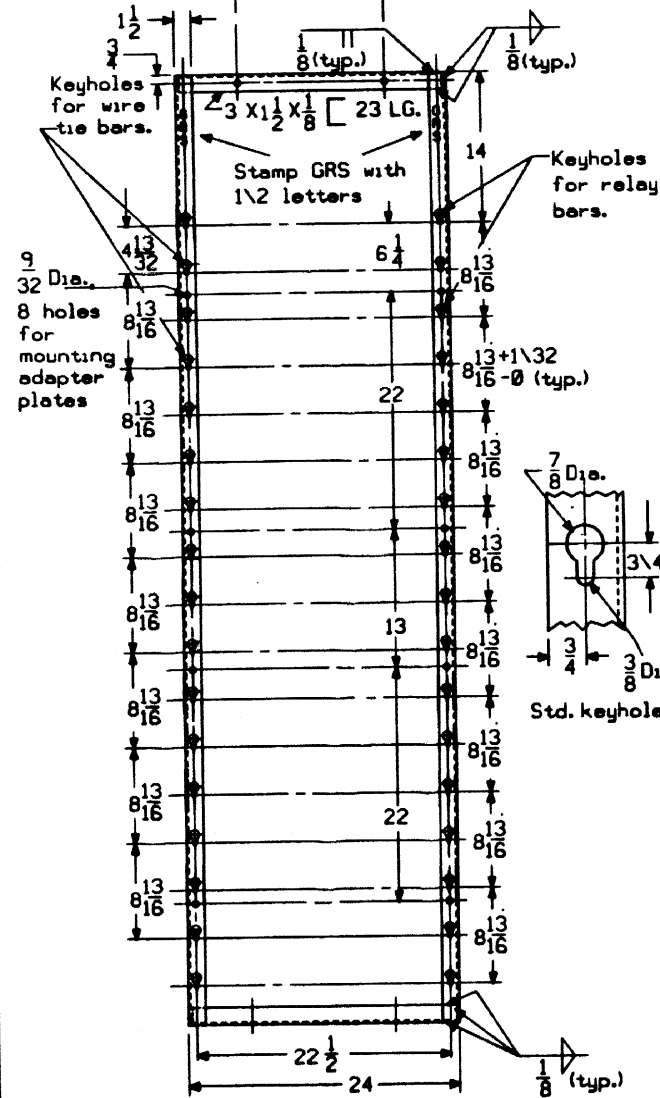
2505-2 RELAY BAR ASSEMBLY



2505-4 ADAPTER PLATE



2505-3 WIRE TIE BAR



2505-1 RACK

Drill & tap #10-32,  
40 holes ea. plate

Keyholes for relay bars.

ITEM	NAME	REQ	REF	ACCT NO
1	Rack	1	2505-1	02-807871
2	Relay bar assembly	9	2505-2	02-678603
3	Wire tie bar	8	2505-3	02-678629
4	Adapter plate	4	2505-4	02-791406
5	Bolt, hex hd 1/4-20x3/4 lg	8		
6	Nut, hex hd 1/4-20, stl.	8		
7	Washer, lock, spring	8		

NOTES:

1. All parts to be made from 1018 steel.
2. The 5/16x1/4x24 bar on relay bar assembly item 2, must be made from cold drawn steel.
3. Paint all parts with prime coat & finish coat with fire retardant gray paint Ord. Ref. 47-643954 Albie Cote 107A or approved equal.

SHEET 1

**CONRAIL** CS-2505-A  
STANDARD RELAY RACK

Approved: *[Signature]*  
Chief Engineer C&S

ISSUE DATE: APR. 4, 1985

REV. 1 OCT. 8, 1985 SHEET 1

REV	DATE	CHK BY
1	APR. 4, 1985	WTZ