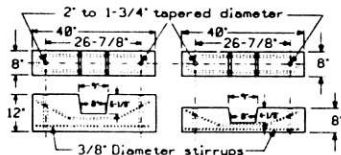
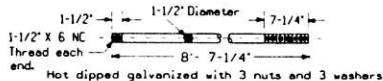


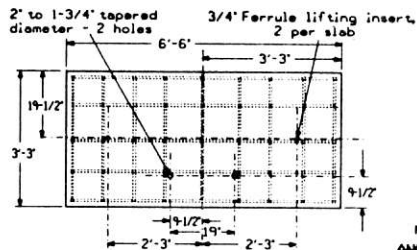
BASE ASSEMBLY INCLUDES
2 TOP SLABS & 2 BOTTOM SLABS



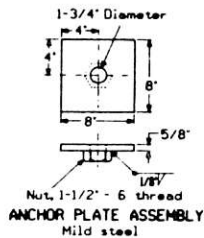
2507-13 SPIDER 2507-12 SPIDER



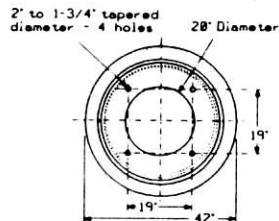
2507-10 STUD BOLTS



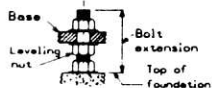
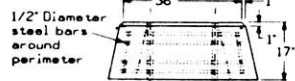
TOP SLAB DETAIL (two each)



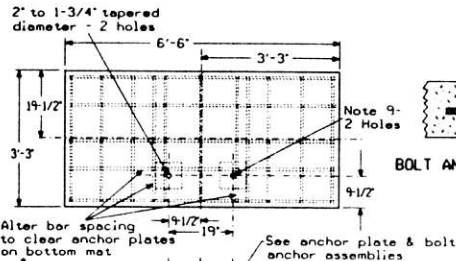
ANCHOR PLATE ASSEMBLY
Mild steel



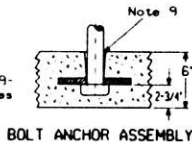
TOP BLOCK



LEVELING DETAIL



BOTTOM SLAB DETAIL (two each)



BOLT ANCHOR ASSEMBLY

BASE REINFORCING - TOP AND BOTTOM SLABS

TOP MAT

5 bars (5/8" dia.), 75" long on 8-1/2" centers
9 bars (3/4" dia.), 36" long on 9-1/4" centers

BOTTOM MAT

5 bars (3/4" dia.), 75" long on 8-1/2" centers
9 bars (3/4" dia.), 36" long on 9-1/4" centers

See sheet 3 for notes and sheet 4 for account reference numbers.

SHEET 2
CONT ON SH 3

CONRAIL CS-2507

STANDARD
FOUNDATIONS, PRECAST CONCRETE
DETAILS FOR 2507-6

ISSUE DATE: DEC 7, 1967

REV.

REV	DATE	CHKD BY